

SELPLG / PSGL-1 / CD162 Antibody (clone HECA-452)
Rat Monoclonal Antibody
Catalog # ALS13027

Specification

SELPLG / PSGL-1 / CD162 Antibody (clone HECA-452) - Product Information

Application	IHC
Primary Accession	Q14242
Reactivity	Human, Mouse
Host	Rat
Clonality	Monoclonal
Calculated MW	43kDa KDa

SELPLG / PSGL-1 / CD162 Antibody (clone HECA-452) - Additional Information

Gene ID 6404

Other Names

P-selectin glycoprotein ligand 1, PSGL-1, Selectin P ligand, CD162, SELPLG

Reconstitution & Storage

+4°C, avoid freezing

Precautions

SELPLG / PSGL-1 / CD162 Antibody (clone HECA-452) is for research use only and not for use in diagnostic or therapeutic procedures.

SELPLG / PSGL-1 / CD162 Antibody (clone HECA-452) - Protein Information

Name SELPLG

Function

A SLe(x)-type proteoglycan, which through high affinity, calcium-dependent interactions with E-, P- and L-selectins, mediates rapid rolling of leukocytes over vascular surfaces during the initial steps in inflammation. Critical for the initial leukocyte capture.

Cellular Location

Membrane; Single-pass type I membrane protein.

Tissue Location

Expressed on neutrophils, monocytes and most lymphocytes

Volume

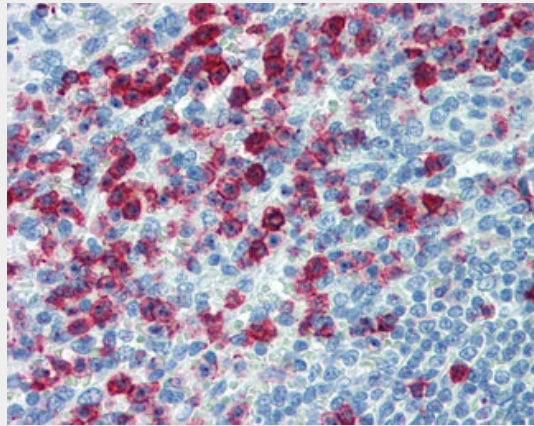
50 µl

SELPLG / PSGL-1 / CD162 Antibody (clone HECA-452) - Protocols

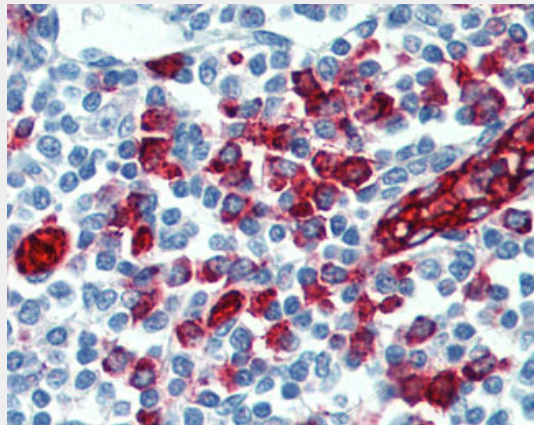
Provided below are standard protocols that you may find useful for product applications.

- [Western Blot](#)
- [Blocking Peptides](#)
- [Dot Blot](#)
- [Immunohistochemistry](#)
- [Immunofluorescence](#)
- [Immunoprecipitation](#)
- [Flow Cytometry](#)
- [Cell Culture](#)

SELPLG / PSGL-1 / CD162 Antibody (clone HECA-452) - Images



Anti-SELPLG / CD162 antibody IHC of human spleen.



Anti-SELPLG / CD162 antibody IHC of human tonsil.

SELPLG / PSGL-1 / CD162 Antibody (clone HECA-452) - Background

A SLe(x)-type proteoglycan, which through high affinity, calcium-dependent interactions with E-, P- and L-selectins, mediates rapid rolling of leukocytes over vascular surfaces during the initial steps in inflammation. Critical for the initial leukocyte capture.

SELPLG / PSGL-1 / CD162 Antibody (clone HECA-452) - References

Veldman G.M., et al. *J. Biol. Chem.* 270:16470-16475(1995).
Sako D., et al. *Cell* 75:1179-1186(1993).
Ota T., et al. *Nat. Genet.* 36:40-45(2004).
Scherer S.E., et al. *Nature* 440:346-351(2006).

Moore K.L., et al. J. Biol. Chem. 269:23318-23327(1994).