

PIGY Antibody (Internal)
Rabbit Polyclonal Antibody
Catalog # ALS13016

Specification

PIGY Antibody (Internal) - Product Information

Application	IF, IHC
Primary Accession	O3MUY2
Reactivity	Human, Mouse
Host	Rabbit
Clonality	Polyclonal
Calculated MW	8kDa KDa

PIGY Antibody (Internal) - Additional Information

Gene ID 84992

Other Names

Phosphatidylinositol N-acetylglucosaminyltransferase subunit Y, Phosphatidylinositol-glycan biosynthesis class Y protein, PIG-Y, PIGY

Target/Specificity

The PIG-Y gene encodes two proteins, one of which arises from leaky scanning of the mRNA. This antibody only detects isoform 1 of PIG-Y. Despite its predicted molecular weight, PIG-Y often migrates at 28-30 kD in SDS-PAGE.

Reconstitution & Storage

Short term 4°C, long term aliquot and store at -20°C, avoid freeze thaw cycles. Store undiluted.

Precautions

PIGY Antibody (Internal) is for research use only and not for use in diagnostic or therapeutic procedures.

PIGY Antibody (Internal) - Protein Information

Name PIGY ([HGNC:28213](#))

Function

Part of the glycosylphosphatidylinositol-N- acetylglucosaminyltransferase (GPI-GnT) complex that catalyzes the transfer of N-acetylglucosamine from UDP-N-acetylglucosamine to phosphatidylinositol and participates in the first step of GPI biosynthesis (PubMed:[16162815](http://www.uniprot.org/citations/16162815)). May act by regulating the catalytic subunit PIGA (PubMed:[16162815](http://www.uniprot.org/citations/16162815)).

Cellular Location

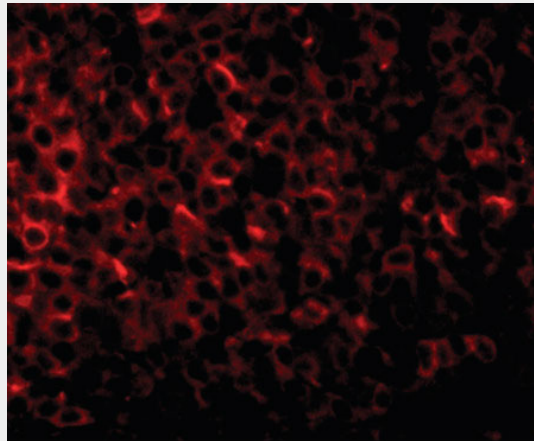
Endoplasmic reticulum membrane; Multi-pass membrane protein

PIGY Antibody (Internal) - Protocols

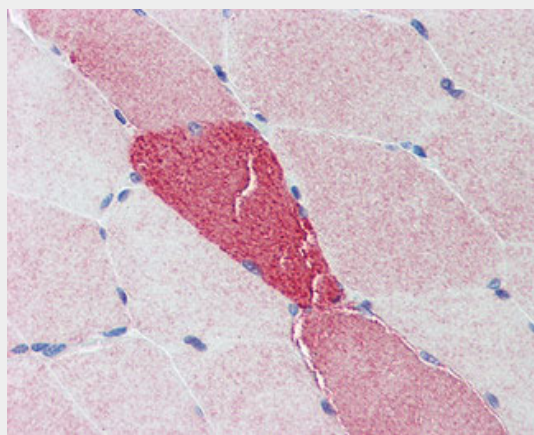
Provided below are standard protocols that you may find useful for product applications.

- [Western Blot](#)
- [Blocking Peptides](#)
- [Dot Blot](#)
- [Immunohistochemistry](#)
- [Immunofluorescence](#)
- [Immunoprecipitation](#)
- [Flow Cytometry](#)
- [Cell Culture](#)

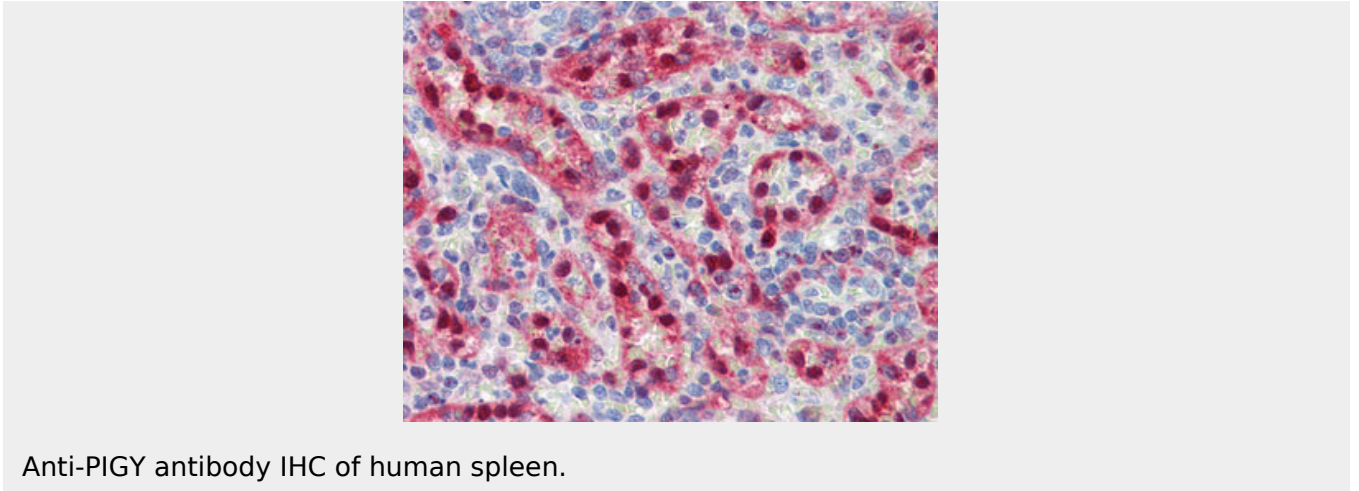
PIGY Antibody (Internal) - Images



Immunofluorescence of PIGY in human spleen tissue with PIGY1 antibody at 20 ug/ml.



Anti-PIGY antibody IHC of human skeletal muscle.



Anti-PIGY antibody IHC of human spleen.

PIGY Antibody (Internal) - Background

Component of the GPI-GlcNAc transferase (GPI-GnT) complex in the endoplasmic reticulum, a complex that catalyzes transfer of GlcNAc from UDP-GlcNAc to an acceptor phosphatidylinositol, the first step in the production of GPI- anchors for cell surface proteins. May act by regulating the catalytic subunit PIGA.

PIGY Antibody (Internal) - References

Murakami Y., et al. Mol. Biol. Cell 16:5236-5246(2005).