

**BRAF / B-Raf Antibody (clone 1H12)**  
**Mouse Monoclonal Antibody**  
**Catalog # ALS13013****Specification**

---

**BRAF / B-Raf Antibody (clone 1H12) - Product Information**

Application	IF, IHC
Primary Accession	<a href="#">P15056</a>
Reactivity	Human, Mouse
Host	Mouse
Clonality	Monoclonal
Calculated MW	84kDa kDa

**BRAF / B-Raf Antibody (clone 1H12) - Additional Information****Gene ID** 673**Other Names**

Serine/threonine-protein kinase B-raf, 2.7.11.1, Proto-oncogene B-Raf, p94, v-Raf murine sarcoma viral oncogene homolog B1, BRAF, BRAF1, RAFB1

**Target/Specificity**

Human BRAF

**Reconstitution & Storage**

Long term: -20°C; Short term: +4°C. Avoid repeat freeze-thaw cycles.

**Precautions**

BRAF / B-Raf Antibody (clone 1H12) is for research use only and not for use in diagnostic or therapeutic procedures.

**BRAF / B-Raf Antibody (clone 1H12) - Protein Information****Name** BRAF ([HGNC:1097](#))**Synonyms** BRAF1, RAFB1**Function**

Protein kinase involved in the transduction of mitogenic signals from the cell membrane to the nucleus (Probable). Phosphorylates MAP2K1, and thereby activates the MAP kinase signal transduction pathway (PubMed:[21441910](http://www.uniprot.org/citations/21441910), PubMed:[29433126](http://www.uniprot.org/citations/29433126)). Phosphorylates PFKFB2 (PubMed:[36402789](http://www.uniprot.org/citations/36402789)). May play a role in the postsynaptic responses of hippocampal neurons (PubMed:[1508179](http://www.uniprot.org/citations/1508179)).

**Cellular Location**

Nucleus. Cytoplasm. Cell membrane. Note=Colocalizes with RGS14 and RAF1 in both the cytoplasm and membranes.

#### Tissue Location

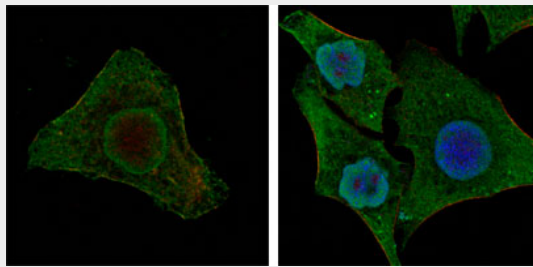
Brain and testis.

#### BRAF / B-Raf Antibody (clone 1H12) - Protocols

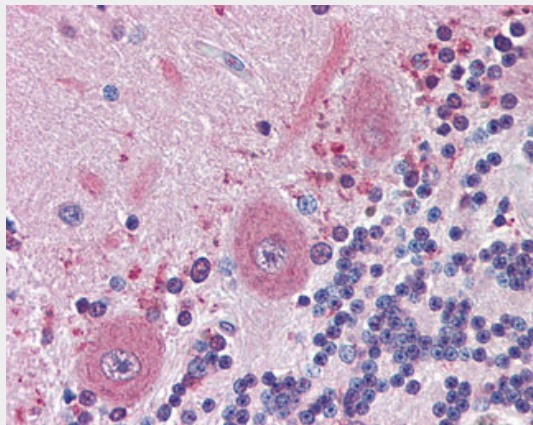
Provided below are standard protocols that you may find useful for product applications.

- [Western Blot](#)
- [Blocking Peptides](#)
- [Dot Blot](#)
- [Immunohistochemistry](#)
- [Immunofluorescence](#)
- [Immunoprecipitation](#)
- [Flow Cytometry](#)
- [Cell Culture](#)

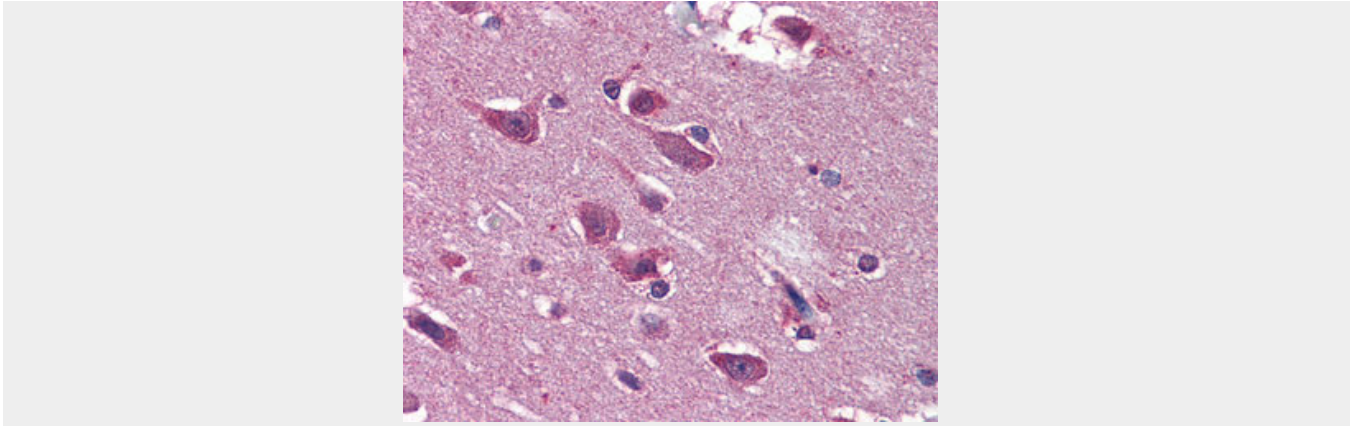
#### BRAF / B-Raf Antibody (clone 1H12) - Images



Confocal immunofluorescence of MCF-7 (left) and HepG2 (right) cells using BRAF mouse monoclonal...



Anti-BRAF antibody IHC of human brain, cerebellum.



Anti-BRAF antibody IHC of human brain, cortex.

### **BRAF / B-Raf Antibody (clone 1H12) - Background**

Protein kinase involved in the transduction of mitogenic signals from the cell membrane to the nucleus. May play a role in the postsynaptic responses of hippocampal neuron. Phosphorylates MAP2K1, and thereby contributes to the MAP kinase signal transduction pathway.

### **BRAF / B-Raf Antibody (clone 1H12) - References**

- Stephens R.M., et al. *Mol. Cell. Biol.* 12:3733-3742(1992).
- Albert S., et al. Submitted (JAN-2004) to the EMBL/GenBank/DDBJ databases.
- Scherer S.W., et al. *Science* 300:767-772(2003).
- Hillier L.W., et al. *Nature* 424:157-164(2003).
- Eychene A., et al. *Oncogene* 7:1657-1660(1992).