

**BDNF Antibody**  
**Goat Polyclonal Antibody**  
**Catalog # ALS12984****Specification**

---

**BDNF Antibody - Product Information**

Application	IHC
Primary Accession	<a href="#">P23560</a>
Reactivity	Human, Mouse, Rat, Hamster, Monkey, Pig, Horse, Bovine, Guinea Pig, Dog
Host	Goat
Clonality	Polyclonal
Calculated MW	28kDa KDa

**BDNF Antibody - Additional Information****Gene ID** 627**Other Names**

Brain-derived neurotrophic factor, BDNF, Abrineurin, BDNF

**Target/Specificity**

Human BDNF. This antibody is expected to recognise all reported isoforms (NP\_001700.2; NP\_001700.2; NP\_733928.1; NP\_733929.1; NP\_733930.1; NP\_733931.1)

**Reconstitution & Storage**

Store at -20°C. Minimize freezing and thawing.

**Precautions**

BDNF Antibody is for research use only and not for use in diagnostic or therapeutic procedures.

**BDNF Antibody - Protein Information****Name** BDNF {ECO:0000303|PubMed:28397838, ECO:0000312|HGNC:HGNC:1033}**Function**

Important signaling molecule that activates signaling cascades downstream of NTRK2 (PubMed:<a href="http://www.uniprot.org/citations/11152678" target="\_blank">11152678</a>). During development, promotes the survival and differentiation of selected neuronal populations of the peripheral and central nervous systems. Participates in axonal growth, pathfinding and in the modulation of dendritic growth and morphology. Major regulator of synaptic transmission and plasticity at adult synapses in many regions of the CNS. The versatility of BDNF is emphasized by its contribution to a range of adaptive neuronal responses including long-term potentiation (LTP), long-term depression (LTD), certain forms of short-term synaptic plasticity, as well as homeostatic regulation of intrinsic neuronal excitability.

**Cellular Location**

Secreted

### Tissue Location

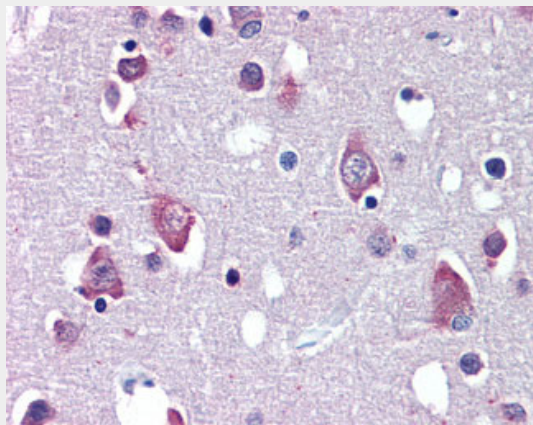
Detected in blood plasma and in saliva (at protein level) (PubMed:11152678, PubMed:19467646). Brain. Highly expressed in hippocampus, amygdala, cerebral cortex and cerebellum. Also expressed in heart, lung, skeletal muscle, testis, prostate and placenta

### BDNF Antibody - Protocols

Provided below are standard protocols that you may find useful for product applications.

- [Western Blot](#)
- [Blocking Peptides](#)
- [Dot Blot](#)
- [Immunohistochemistry](#)
- [Immunofluorescence](#)
- [Immunoprecipitation](#)
- [Flow Cytometry](#)
- [Cell Culture](#)

### BDNF Antibody - Images



Anti-BDNF antibody IHC of human brain, cortex.

### BDNF Antibody - Background

During development, promotes the survival and differentiation of selected neuronal populations of the peripheral and central nervous systems. Participates in axonal growth, pathfinding and in the modulation of dendritic growth and morphology. Major regulator of synaptic transmission and plasticity at adult synapses in many regions of the CNS. The versatility of BDNF is emphasized by its contribution to a range of adaptive neuronal responses including long-term potentiation (LTP), long-term depression (LTD), certain forms of short-term synaptic plasticity, as well as homeostatic regulation of intrinsic neuronal excitability.

### BDNF Antibody - References

- Jones K.R., et al. Proc. Natl. Acad. Sci. U.S.A. 87:8060-8064(1990).  
Maisonpierre P.C., et al. Genomics 10:558-568(1991).  
Shintani A., et al. Biochem. Biophys. Res. Commun. 182:325-332(1992).  
Liu Q.-R., et al. Am. J. Med. Genet. B Neuropsychiatr. Genet. 134:93-103(2005).  
Pruunsild P., et al. Genomics 90:397-406(2007).