

TMC8 / EVER2 Antibody (Internal)
Rabbit Polyclonal Antibody
Catalog # ALS12977**Specification**

TMC8 / EVER2 Antibody (Internal) - Product Information

Application	WB, IF, IHC
Primary Accession	Q8IU68
Reactivity	Human, Mouse, Rat
Host	Rabbit
Clonality	Polyclonal
Calculated MW	82kDa KDa

TMC8 / EVER2 Antibody (Internal) - Additional Information**Gene ID** 147138**Other Names**

Transmembrane channel-like protein 8, Epidermodysplasia verruciformis protein 2, TMC8, EVER2, EVIN2

Reconstitution & Storage

Short term 4°C, long term aliquot and store at -20°C, avoid freeze thaw cycles. Store undiluted.

Precautions

TMC8 / EVER2 Antibody (Internal) is for research use only and not for use in diagnostic or therapeutic procedures.

TMC8 / EVER2 Antibody (Internal) - Protein Information**Name** TMC8 ([HGNC:20474](#))**Function**

Acts as a regulatory protein involved in the regulation of numerous cellular processes (PubMed:[18158319](http://www.uniprot.org/citations/18158319), PubMed:[23429285](http://www.uniprot.org/citations/23429285), PubMed:[30068544](http://www.uniprot.org/citations/30068544), PubMed:[32917726](http://www.uniprot.org/citations/32917726)). Together with its homolog TMC6/EVER1, forms a complex with calcium-binding protein CIB1 in lymphocytes and keratinocytes where TMC6 and TMC8 stabilize CIB1 levels and reciprocally (PubMed:[30068544](http://www.uniprot.org/citations/30068544), PubMed:[32917726](http://www.uniprot.org/citations/32917726)). Together with TMC6, also forms a complex with and activates zinc transporter ZNT1 at the ER membrane of keratinocytes, thereby facilitating zinc uptake into the ER (PubMed:[18158319](http://www.uniprot.org/citations/18158319)). Also inhibits receptor-mediated calcium release from ER stores and calcium activated and volume regulated chloride channels (PubMed:[25220380](http://www.uniprot.org/citations/25220380)). Down-regulates the activity of transcription factors induced by

zinc and cytokines (PubMed:18158319). Also sequesters TRADD which impairs the recruitment of TRAF2 and RIPK1 in the pro-survival complex I and promotes proapoptotic complex II formation, and may therefore be involved in TNF-induced cell death/survival decisions (PubMed:23429285).

Cellular Location

Endoplasmic reticulum membrane; Multi-pass membrane protein. Golgi apparatus membrane; Multi-pass membrane protein. Nucleus membrane; Multi-pass membrane protein. Note=Localizes to the ER, Golgi and nucleus membranes in keratinocytes.

Tissue Location

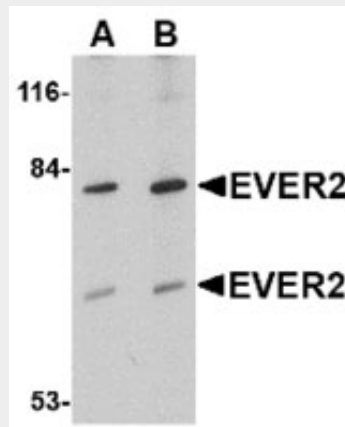
Expressed in placenta, prostate and testis.

TMC8 / EVER2 Antibody (Internal) - Protocols

Provided below are standard protocols that you may find useful for product applications.

- [Western Blot](#)
- [Blocking Peptides](#)
- [Dot Blot](#)
- [Immunohistochemistry](#)
- [Immunofluorescence](#)
- [Immunoprecipitation](#)
- [Flow Cytometry](#)
- [Cell Culture](#)

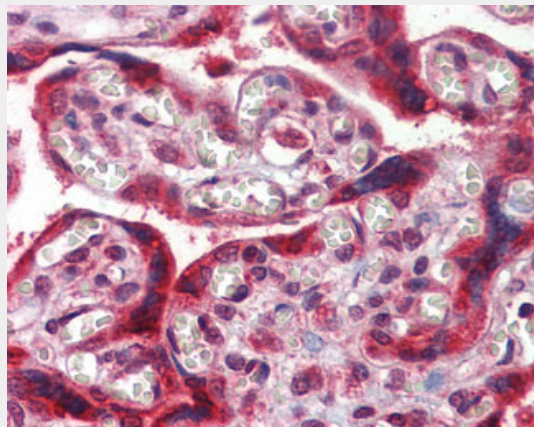
TMC8 / EVER2 Antibody (Internal) - Images



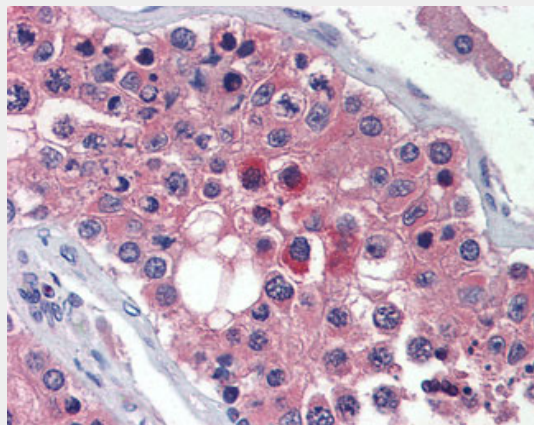
Western blot of EVER2 in Jurkat cell lysate with EVER2 antibody at (A) 1 and (B) 2 ug/ml.



Immunofluorescence of EVER2 in Human Brain cells with EVER2 antibody at 20 ug/ml.



Anti-TMC8 / EVER2 antibody IHC of human placenta.



Anti-TMC8 / EVER2 antibody IHC of human testis.

TMC8 / EVER2 Antibody (Internal) - Background

Probable ion channel.

TMC8 / EVER2 Antibody (Internal) - References

- Ramoz N., et al. Nat. Genet. 32:579-581(2002).
- Kurima K., et al. Genomics 82:300-308(2003).
- Jikuya H., et al. Submitted (JUL-2002) to the EMBL/GenBank/DDBJ databases.
- Zody M.C., et al. Nature 440:1045-1049(2006).

