

AMPH / Amphiphysin Antibody (clone 3)
Mouse Monoclonal Antibody
Catalog # ALS12951

Specification

AMPH / Amphiphysin Antibody (clone 3) - Product Information

Application	IHC
Primary Accession	P49418
Reactivity	Human, Mouse, Rat, Rabbit, Hamster, Monkey, Bovine, Dog
Host	Mouse
Clonality	Monoclonal
Calculated MW	76kDa KDa

AMPH / Amphiphysin Antibody (clone 3) - Additional Information

Gene ID 273

Other Names

Amphiphysin, AMPH, AMPH1

Target/Specificity

Detects a ~128 kD protein, corresponding to the apparent molecular mass of Amphiphysin I on SDS-PAGE immunoblots, in samples from human, mouse, rat, bovine, canine, hamster, monkey and rabbit origins. A 108 kD isoform may be observed in some tissues ...

Reconstitution & Storage

Store at -20°C.

Precautions

AMPH / Amphiphysin Antibody (clone 3) is for research use only and not for use in diagnostic or therapeutic procedures.

AMPH / Amphiphysin Antibody (clone 3) - Protein Information

Name AMPH

Synonyms AMPH1

Function

May participate in mechanisms of regulated exocytosis in synapses and certain endocrine cell types. May control the properties of the membrane associated cytoskeleton.

Cellular Location

Cytoplasmic vesicle, secretory vesicle, synaptic vesicle membrane; Peripheral membrane protein; Cytoplasmic side Cytoplasm, cytoskeleton

Tissue Location

Neurons, certain endocrine cell types and spermatocytes

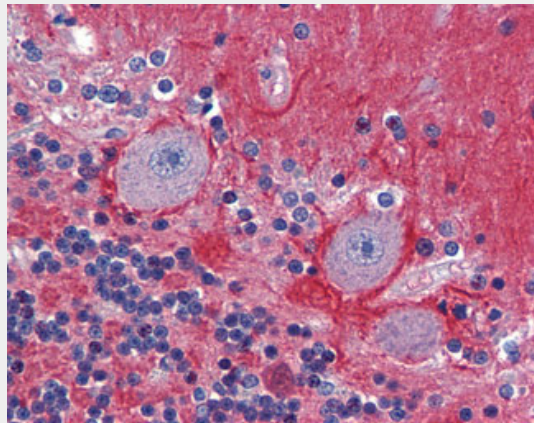
Volume
250 μ l

AMPH / Amphiphysin Antibody (clone 3) - Protocols

Provided below are standard protocols that you may find useful for product applications.

- [Western Blot](#)
- [Blocking Peptides](#)
- [Dot Blot](#)
- [Immunohistochemistry](#)
- [Immunofluorescence](#)
- [Immunoprecipitation](#)
- [Flow Cytometry](#)
- [Cell Culture](#)

AMPH / Amphiphysin Antibody (clone 3) - Images



Anti-AMPH / Amphiphysin antibody IHC of human brain, cerebellum.



Anti-AMPH / Amphiphysin antibody IHC of human small intestine, submucosal plexus.

AMPH / Amphiphysin Antibody (clone 3) - Background

May participate in mechanisms of regulated exocytosis in synapses and certain endocrine cell

types. May control the properties of the membrane associated cytoskeleton.

AMPH / Amphiphysin Antibody (clone 3) - References

David C., et al. FEBS Lett. 351:73-79(1994).

Yamamoto R., et al. Hum. Mol. Genet. 4:265-268(1995).

Floyd S.R., et al. Mol. Med. 4:29-39(1998).

Scherer S.W., et al. Science 300:767-772(2003).

Mural R.J., et al. Submitted (JUL-2005) to the EMBL/GenBank/DDBJ databases.