

CRADD / RAIDD Antibody
Rabbit Polyclonal Antibody
Catalog # ALS12940**Specification**

CRADD / RAIDD Antibody - Product Information

Application	IHC
Primary Accession	P78560
Reactivity	Human, Dog
Host	Rabbit
Clonality	Polyclonal
Calculated MW	23kDa KDa

CRADD / RAIDD Antibody - Additional Information**Gene ID** 8738**Other Names**

Death domain-containing protein CRADD, Caspase and RIP adapter with death domain, RIP-associated protein with a death domain, CRADD, RAIDD

Target/Specificity

Detects an ~24 kD protein, corresponding to the apparent molecular mass of RAIDD on SDS-PAGE immunoblots. This 24 kD band, as well as a 67 kD band, can be specifically inhibited by the relevant peptide.

Reconstitution & Storage

Store at -20°C.

Precautions

CRADD / RAIDD Antibody is for research use only and not for use in diagnostic or therapeutic procedures.

CRADD / RAIDD Antibody - Protein Information**Name** CRADD**Synonyms** RAIDD**Function**

Adapter protein that associates with PIDD1 and the caspase CASP2 to form the PIDDosome, a complex that activates CASP2 and triggers apoptosis (PubMed: [15073321](http://www.uniprot.org/citations/15073321), PubMed: [16652156](http://www.uniprot.org/citations/16652156), PubMed: [17159900](http://www.uniprot.org/citations/17159900), PubMed: [17289572](http://www.uniprot.org/citations/17289572), PubMed: [9044836](http://www.uniprot.org/citations/9044836)). Also recruits CASP2 to the TNFR-1 signaling complex through its interaction with RIPK1 and TRADD and may

play a role in the tumor necrosis factor-mediated signaling pathway (PubMed:8985253).

Cellular Location

Cytoplasm {ECO:0000250|UniProtKB:O88843}. Nucleus {ECO:0000250|UniProtKB:O88843}

Tissue Location

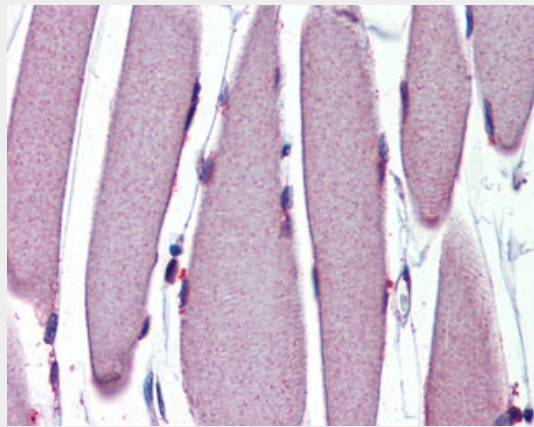
Constitutively expressed in most tissues, with particularly high expression in adult heart, testis, liver, skeletal muscle, fetal liver and kidney.

CRADD / RAIDD Antibody - Protocols

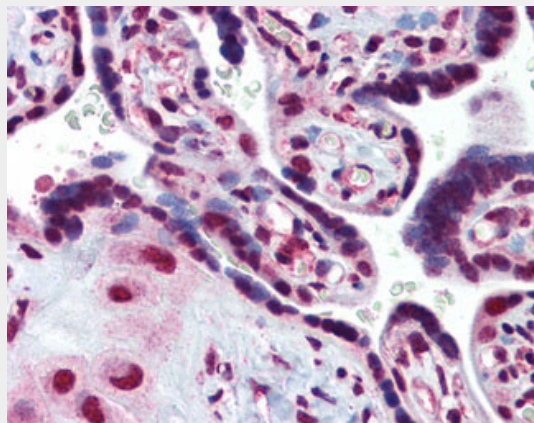
Provided below are standard protocols that you may find useful for product applications.

- [Western Blot](#)
- [Blocking Peptides](#)
- [Dot Blot](#)
- [Immunohistochemistry](#)
- [Immunofluorescence](#)
- [Immunoprecipitation](#)
- [Flow Cytometry](#)
- [Cell Culture](#)

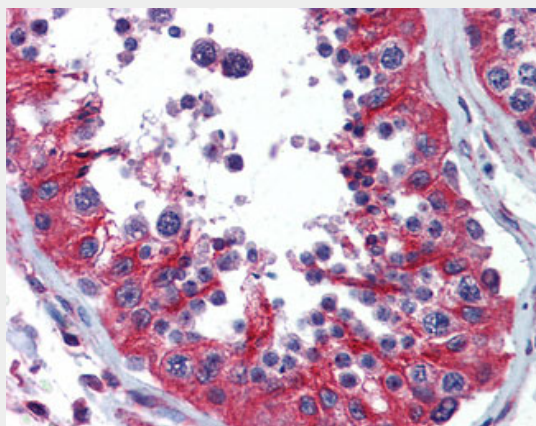
CRADD / RAIDD Antibody - Images



Anti-CRADD / RAIDD antibody IHC of human skeletal muscle.



Anti-CRADD / RAIDD antibody IHC of human placenta.



Anti-CRADD / RAIDD antibody IHC of human testis.

CRADD / RAIDD Antibody - Background

Apoptotic adaptor molecule specific for caspase-2 and FASL/TNF receptor-interacting protein RIP. In the presence of RIP and TRADD, CRADD recruits caspase-2 to the TNFR-1 signalling complex.

CRADD / RAIDD Antibody - References

- Ahmad M.,et al.Cancer Res. 57:615-619(1997).
- Duan H.,et al.Nature 385:86-89(1997).
- Ota T.,et al.Nat. Genet. 36:40-45(2004).
- Scherer S.E.,et al.Nature 440:346-351(2006).
- Tinel A.,et al.Science 304:843-846(2004).