

KRT18 / CK18 / Cytokeratin 18 Antibody (clone C-04)
Mouse Monoclonal Antibody
Catalog # ALS12927**Specification**

KRT18 / CK18 / Cytokeratin 18 Antibody (clone C-04) - Product Information

Application	IHC
Primary Accession	P05783
Reactivity	Human
Host	Mouse
Clonality	Monoclonal
Calculated MW	48kDa KDa

KRT18 / CK18 / Cytokeratin 18 Antibody (clone C-04) - Additional Information**Gene ID** 3875**Other Names**

Keratin, type I cytoskeletal 18, Cell proliferation-inducing gene 46 protein, Cytokeratin-18, CK-18, Keratin-18, K18, KRT18, CYK18

Target/Specificity

Reacts with Cytokeratin 18 (45 kD). Cytokeratins are a member of intermediate filaments subfamily represented in epithelial tissues.

Reconstitution & Storage

Short term 4°C, long term aliquot and store at -20°C, avoid freeze thaw cycles.

Precautions

KRT18 / CK18 / Cytokeratin 18 Antibody (clone C-04) is for research use only and not for use in diagnostic or therapeutic procedures.

KRT18 / CK18 / Cytokeratin 18 Antibody (clone C-04) - Protein Information**Name** KRT18**Synonyms** CYK18**Function**

Involved in the uptake of thrombin-antithrombin complexes by hepatic cells (By similarity). When phosphorylated, plays a role in filament reorganization. Involved in the delivery of mutated CFTR to the plasma membrane. Together with KRT8, is involved in interleukin-6 (IL-6)-mediated barrier protection.

Cellular Location

Nucleus matrix {ECO:0000250|UniProtKB:Q5BJY9}. Cytoplasm, perinuclear region. Nucleus, nucleolus. Cytoplasm {ECO:0000250|UniProtKB:Q5BJY9}

Tissue Location

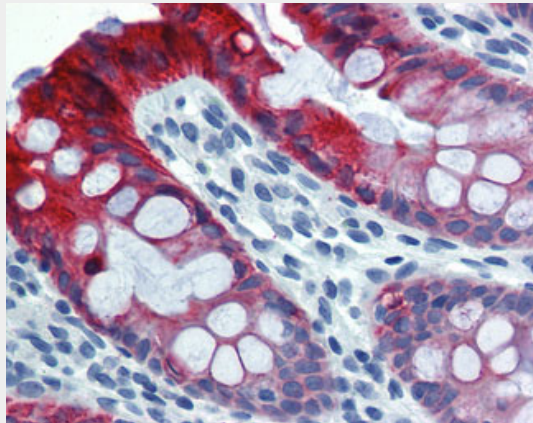
Expressed in colon, placenta, liver and very weakly in exocervix. Increased expression observed in lymph nodes of breast carcinoma.

KRT18 / CK18 / Cytokeratin 18 Antibody (clone C-04) - Protocols

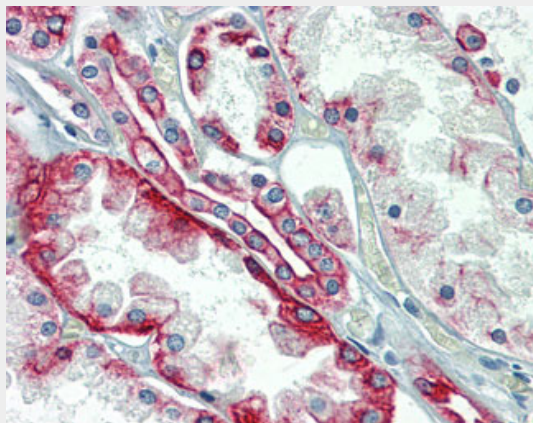
Provided below are standard protocols that you may find useful for product applications.

- [Western Blot](#)
- [Blocking Peptides](#)
- [Dot Blot](#)
- [Immunohistochemistry](#)
- [Immunofluorescence](#)
- [Immunoprecipitation](#)
- [Flow Cytometry](#)
- [Cell Culture](#)

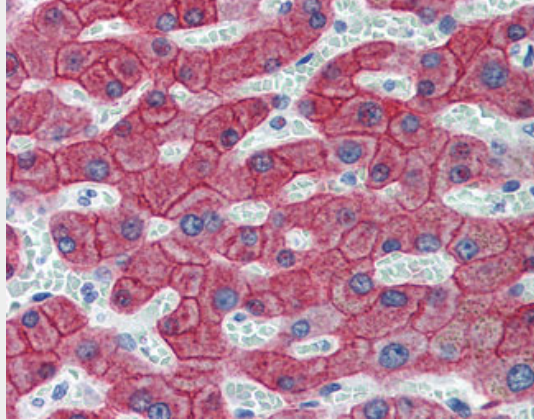
KRT18 / CK18 / Cytokeratin 18 Antibody (clone C-04) - Images



Anti-KRT18 / Cytokeratin 18 antibody IHC of human colon.



Anti-KRT18 / Cytokeratin 18 antibody IHC of human kidney.



Anti-KRT18 / Cytokeratin 18 antibody IHC of human liver.

KRT18 / CK18 / Cytokeratin 18 Antibody (clone C-04) - Background

Involved in the uptake of thrombin-antithrombin complexes by hepatic cells (By similarity). When phosphorylated, plays a role in filament reorganization. Involved in the delivery of mutated CFTR to the plasma membrane. Together with KRT8, is involved in interleukin-6 (IL-6)-mediated barrier protection.

KRT18 / CK18 / Cytokeratin 18 Antibody (clone C-04) - References

Oshima R.G.,et al.Differentiation 33:61-68(1986).
Kim J.W.,et al.Submitted (SEP-2004) to the EMBL/GenBank/DDBJ databases.
Kalnina N.,et al.Submitted (OCT-2004) to the EMBL/GenBank/DDBJ databases.
Suzuki Y.,et al.Submitted (APR-2005) to the EMBL/GenBank/DDBJ databases.
Kulesh D.A.,et al.Mol. Cell. Biol. 8:1540-1550(1988).