

ROR1 Antibody
Goat Polyclonal Antibody
Catalog # ALS12922**Specification**

ROR1 Antibody - Product Information

Application	IHC
Primary Accession	Q01973
Reactivity	Human
Host	Goat
Clonality	Polyclonal
Calculated MW	104kDa KDa

ROR1 Antibody - Additional Information**Gene ID** 4919**Other Names**

Tyrosine-protein kinase transmembrane receptor ROR1, 2.7.10.1, Neurotrophic tyrosine kinase, receptor-related 1, ROR1, NTRKR1

Target/Specificity

Human ROR1. This antibody is expected to recognize isoform 1 (NP_005003.2) only.

Reconstitution & Storage

Store at -20°C. Minimize freezing and thawing.

Precautions

ROR1 Antibody is for research use only and not for use in diagnostic or therapeutic procedures.

ROR1 Antibody - Protein Information**Name** ROR1**Synonyms** NTRKR1**Function**

Has very low kinase activity in vitro and is unlikely to function as a tyrosine kinase in vivo (PubMed: [25029443](http://www.uniprot.org/citations/25029443)). Receptor for ligand WNT5A which activate downstream NFkB signaling pathway and may result in the inhibition of WNT3A-mediated signaling (PubMed: [25029443](http://www.uniprot.org/citations/25029443), PubMed: [27162350](http://www.uniprot.org/citations/27162350)). In inner ear, crucial for spiral ganglion neurons to innervate auditory hair cells (PubMed: [27162350](http://www.uniprot.org/citations/27162350)). Via IGFBP5 ligand, forms a complex with ERBB2 to enhance CREB oncogenic signaling (PubMed: [36949068](http://www.uniprot.org/citations/36949068)).

Cellular Location

Membrane; Single-pass type I membrane protein. Cell projection, axon
{ECO:0000250|UniProtKB:Q9Z139}

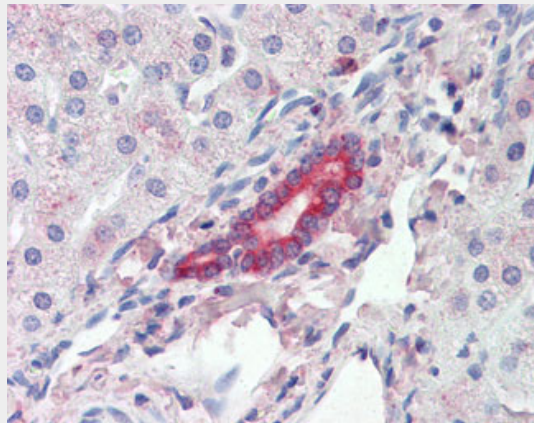
Tissue Location

Expressed strongly in human heart, lung and kidney, but weakly in the CNS. Isoform Short is strongly expressed in fetal and adult CNS and in a variety of human cancers, including those originating from CNS or PNS neuroectoderm

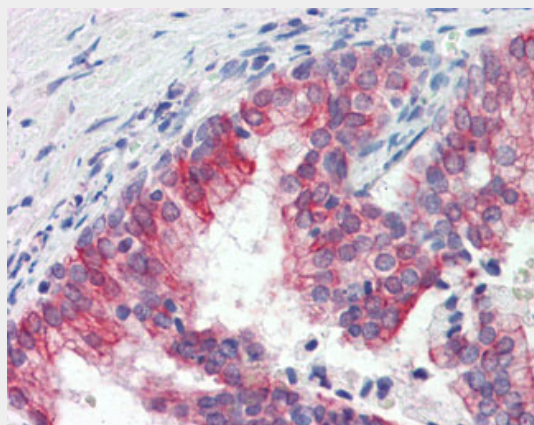
ROR1 Antibody - Protocols

Provided below are standard protocols that you may find useful for product applications.

- [Western Blot](#)
- [Blocking Peptides](#)
- [Dot Blot](#)
- [Immunohistochemistry](#)
- [Immunofluorescence](#)
- [Immunoprecipitation](#)
- [Flow Cytometry](#)
- [Cell Culture](#)

ROR1 Antibody - Images

Anti-ROR1 antibody IHC of human liver.



Anti-ROR1 antibody IHC of human prostate.

ROR1 Antibody - Background

Tyrosine-protein kinase receptor whose role is not yet clear.

ROR1 Antibody - References

Masiakowski P., et al. J. Biol. Chem. 267:26181-26190(1992).
Reddy U.R., et al. Oncogene 13:1555-1559(1996).
Gregory S.G., et al. Nature 441:315-321(2006).
Mural R.J., et al. Submitted (SEP-2005) to the EMBL/GenBank/DDBJ databases.
Sjoeblom T., et al. Science 314:268-274(2006).