

**CHRNA7 Antibody**  
**Goat Polyclonal Antibody**  
**Catalog # ALS12921****Specification**

---

**CHRNA7 Antibody - Product Information**

Application	IHC
Primary Accession	<a href="#">P36544</a>
Reactivity	Human, Monkey, Pig, Chicken, Horse, Bovine, Dog
Host	Goat
Clonality	Polyclonal

**CHRNA7 Antibody - Additional Information****Gene ID** 1139;89832**Other Names**

Neuronal acetylcholine receptor subunit alpha-7, CHRNA7, NACHRA7

**Target/Specificity**

Human CHRNA7. This antibody also reacts with CHRNA7-FAM7A fusion isoform 1 (NP\_647536.1) and isoform 2 (NP\_683709.1).

**Reconstitution & Storage**

Store at -20°C. Minimize freezing and thawing.

**Precautions**

CHRNA7 Antibody is for research use only and not for use in diagnostic or therapeutic procedures.

**CHRNA7 Antibody - Protein Information****Name** CHRNA7**Synonyms** NACHRA7**Function**

After binding acetylcholine, the AChR responds by an extensive change in conformation that affects all subunits and leads to opening of an ion-conducting channel across the plasma membrane. The channel is blocked by alpha-bungarotoxin.

**Cellular Location**

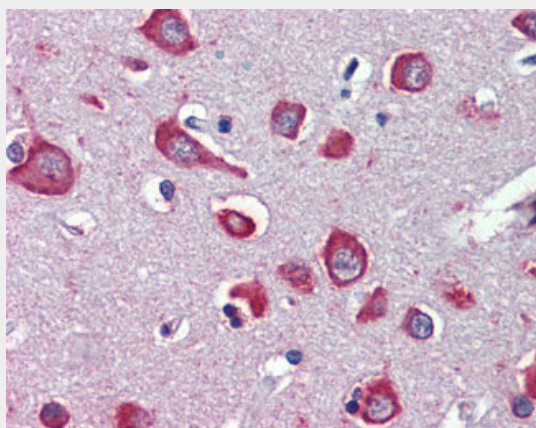
Postsynaptic cell membrane; Multi-pass membrane protein. Cell membrane; Multi-pass membrane protein. Note=TMEM35A/NACHO promotes its trafficking to the cell membrane (PubMed:27789755). RIC3 promotes its trafficking to the cell membrane (By similarity) {ECO:0000250|UniProtKB:Q05941, ECO:0000269|PubMed:27789755}

## CHRNA7 Antibody - Protocols

Provided below are standard protocols that you may find useful for product applications.

- [Western Blot](#)
- [Blocking Peptides](#)
- [Dot Blot](#)
- [Immunohistochemistry](#)
- [Immunofluorescence](#)
- [Immunoprecipitation](#)
- [Flow Cytometry](#)
- [Cell Culture](#)

## CHRNA7 Antibody - Images



Anti-CHRNA7 antibody IHC of human brain, cortex.