

**CYCS / Cytochrome c Antibody (clone 7H8.2C12)**  
**Mouse Monoclonal Antibody**  
**Catalog # ALS12897**

**Specification**

---

**CYCS / Cytochrome c Antibody (clone 7H8.2C12) - Product Information**

Application	IHC
Primary Accession	<a href="#">P99999</a>
Reactivity	Human, Mouse, Rat, Rabbit, Hamster, Monkey, Pig, Sheep, Horse, Bovine, Guinea Pig
Host	Mouse
Clonality	Monoclonal
Calculated MW	12kDa KDa

**CYCS / Cytochrome c Antibody (clone 7H8.2C12) - Additional Information**

**Gene ID** 54205

**Other Names**

Cytochrome c, CYCS, CYC

**Target/Specificity**

Detects an ~14kD protein, corresponding to the apparent molecular mass of Cytochrome c on Western blots with samples from human, mouse, rat, bovine, guinea pig, hamster, monkey, rabbit and sheep origins. This antibody detects denatured Cytochrome c i ...

**Reconstitution & Storage**

Short term 4°C, long term aliquot and store at -20°C, avoid freeze thaw cycles.

**Precautions**

CYCS / Cytochrome c Antibody (clone 7H8.2C12) is for research use only and not for use in diagnostic or therapeutic procedures.

**CYCS / Cytochrome c Antibody (clone 7H8.2C12) - Protein Information**

**Name** CYCS

**Synonyms** CYC

**Function**

Electron carrier protein. The oxidized form of the cytochrome c heme group can accept an electron from the heme group of the cytochrome c1 subunit of cytochrome reductase. Cytochrome c then transfers this electron to the cytochrome oxidase complex, the final protein carrier in the mitochondrial electron-transport chain.

**Cellular Location**

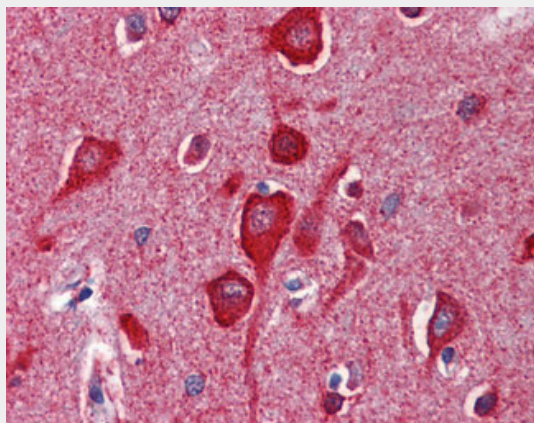
Mitochondrion intermembrane space. Note=Loosely associated with the inner membrane

## CYCS / Cytochrome c Antibody (clone 7H8.2C12) - Protocols

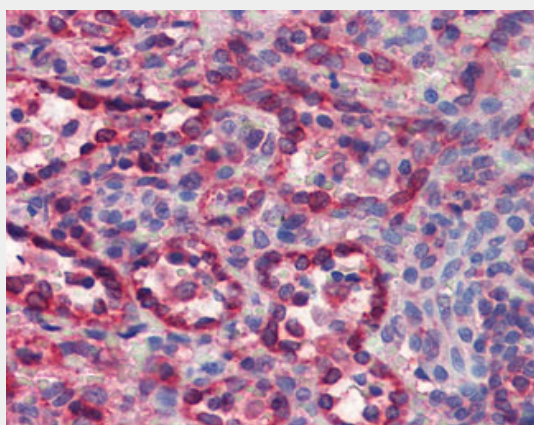
Provided below are standard protocols that you may find useful for product applications.

- [Western Blot](#)
- [Blocking Peptides](#)
- [Dot Blot](#)
- [Immunohistochemistry](#)
- [Immunofluorescence](#)
- [Immunoprecipitation](#)
- [Flow Cytometry](#)
- [Cell Culture](#)

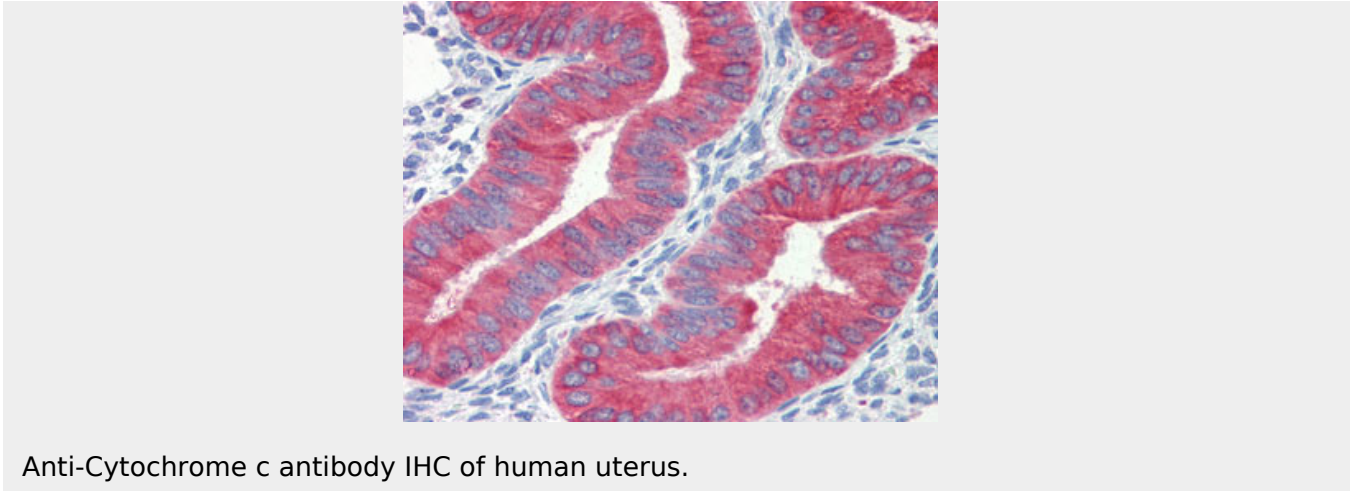
## CYCS / Cytochrome c Antibody (clone 7H8.2C12) - Images



Anti-Cytochrome c antibody IHC of human brain, cortex.



Anti-Cytochrome c antibody IHC of human spleen.



Anti-Cytochrome c antibody IHC of human uterus.

### **CYCS / Cytochrome c Antibody (clone 7H8.2C12) - Background**

Electron carrier protein. The oxidized form of the cytochrome c heme group can accept an electron from the heme group of the cytochrome c1 subunit of cytochrome reductase. Cytochrome c then transfers this electron to the cytochrome oxidase complex, the final protein carrier in the mitochondrial electron-transport chain.

### **CYCS / Cytochrome c Antibody (clone 7H8.2C12) - References**

- Evans M.J.,et al.Proc. Natl. Acad. Sci. U.S.A. 85:9625-9629(1988).
- Kalnine N.,et al.Submitted (MAY-2003) to the EMBL/GenBank/DDBJ databases.
- Ota T.,et al.Nat. Genet. 36:40-45(2004).
- Bechtel S.,et al.BMC Genomics 8:399-399(2007).
- Hillier L.W.,et al.Nature 424:157-164(2003).