

**CASP9 / Caspase 9 Antibody (clone 2-22)**  
**Mouse Monoclonal Antibody**  
**Catalog # ALS12896****Specification**

---

**CASP9 / Caspase 9 Antibody (clone 2-22) - Product Information**

Application	IHC
Primary Accession	<a href="#">P55211</a>
Reactivity	Human, Monkey
Host	Mouse
Clonality	Monoclonal
Calculated MW	46kDa KDa

**CASP9 / Caspase 9 Antibody (clone 2-22) - Additional Information****Gene ID** 842**Other Names**

Caspase-9, CASP-9, 3.4.22.62, Apoptotic protease Mch-6, Apoptotic protease-activating factor 3, APAF-3, ICE-like apoptotic protease 6, ICE-LAP6, Caspase-9 subunit p35, Caspase-9 subunit p10, CASP9, MCH6

**Target/Specificity**

Detects an ~46-50 kD protein, corresponding to the apparent molecular mass of the caspase-9 on SDS-PAGE immunoblots, in samples from human and monkey origins. This antibody recognizes the pro-caspase-9 human recombinant protein as well as pro-caspase ...

**Reconstitution & Storage**

Short term 4°C, long term aliquot and store at -20°C, avoid freeze thaw cycles.

**Precautions**

CASP9 / Caspase 9 Antibody (clone 2-22) is for research use only and not for use in diagnostic or therapeutic procedures.

**CASP9 / Caspase 9 Antibody (clone 2-22) - Protein Information****Name** CASP9**Synonyms** MCH6**Function**

Involved in the activation cascade of caspases responsible for apoptosis execution. Binding of caspase-9 to Apaf-1 leads to activation of the protease which then cleaves and activates effector caspases caspase-3 (CASP3) or caspase-7 (CASP7). Promotes DNA damage- induced apoptosis in a ABL1/c-Abl-dependent manner. Proteolytically cleaves poly(ADP-ribose) polymerase (PARP).

**Tissue Location**

Ubiquitous, with highest expression in the heart, moderate expression in liver, skeletal muscle,

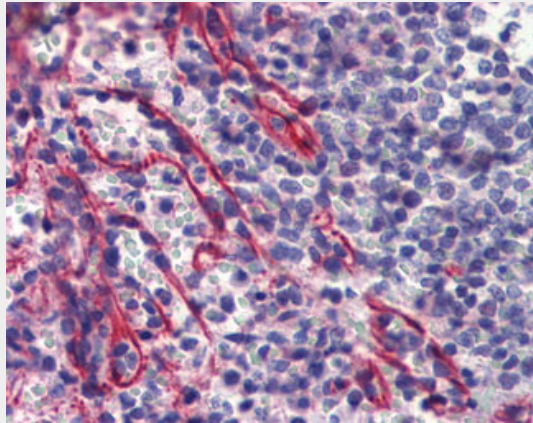
and pancreas. Low levels in all other tissues. Within the heart, specifically expressed in myocytes.

### **CASP9 / Caspase 9 Antibody (clone 2-22) - Protocols**

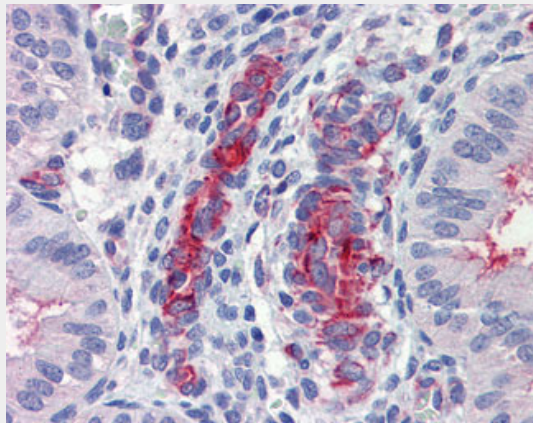
Provided below are standard protocols that you may find useful for product applications.

- [Western Blot](#)
- [Blocking Peptides](#)
- [Dot Blot](#)
- [Immunohistochemistry](#)
- [Immunofluorescence](#)
- [Immunoprecipitation](#)
- [Flow Cytometry](#)
- [Cell Culture](#)

### **CASP9 / Caspase 9 Antibody (clone 2-22) - Images**



Anti-Caspase 9 antibody IHC of human spleen.



Anti-Caspase 9 antibody IHC of human uterus, vessels.

### **CASP9 / Caspase 9 Antibody (clone 2-22) - Background**

Involved in the activation cascade of caspases responsible for apoptosis execution. Binding of caspase-9 to Apaf- 1 leads to activation of the protease which then cleaves and activates caspase-3. Promotes DNA damage-induced apoptosis in a ABL1/c-Abl-dependent manner. Proteolytically cleaves poly(ADP- ribose) polymerase (PARP).

**CASP9 / Caspase 9 Antibody (clone 2-22) - References**

- Duan H.,et al.J. Biol. Chem. 271:16720-16724(1996).  
Srinivasula S.M.,et al.J. Biol. Chem. 271:27099-27106(1996).  
Hadano S.,et al.Mamm. Genome 10:757-760(1999).  
Srinivasula S.M.,et al.Cancer Res. 59:999-1002(1999).  
Izawa M.,et al.Submitted (JUN-1998) to the EMBL/GenBank/DDBJ databases.