

PLIN3 / M6PRBP1 / TIP47 Antibody (Internal)
Goat Polyclonal Antibody
Catalog # ALS12874**Specification****PLIN3 / M6PRBP1 / TIP47 Antibody (Internal) - Product Information**

Application	WB, IHC
Primary Accession	O60664
Reactivity	Mouse, Rat
Host	Goat
Clonality	Polyclonal
Calculated MW	47kDa KDa

PLIN3 / M6PRBP1 / TIP47 Antibody (Internal) - Additional Information**Gene ID** 10226**Other Names**

Perilipin-3, 47 kDa mannose 6-phosphate receptor-binding protein, 47 kDa MPR-binding protein, Cargo selection protein TIP47, Mannose-6-phosphate receptor-binding protein 1, Placental protein 17, PP17, PLIN3, M6PRBP1, TIP47

Target/Specificity

Mouse PLIN3 / M6PRBP1.

Reconstitution & Storage

Store at -20°C. Minimize freezing and thawing.

Precautions

PLIN3 / M6PRBP1 / TIP47 Antibody (Internal) is for research use only and not for use in diagnostic or therapeutic procedures.

PLIN3 / M6PRBP1 / TIP47 Antibody (Internal) - Protein Information**Name** PLIN3**Synonyms** M6PRBP1, TIP47 {ECO:0000303|PubMed:95901**Function**

Structural component of lipid droplets, which is required for the formation and maintenance of lipid storage droplets (PubMed:34077757). Required for the transport of mannose 6-phosphate receptors (MPR) from endosomes to the trans-Golgi network (PubMed:9590177).

Cellular Location

Lipid droplet. Endosome membrane; Peripheral membrane protein; Cytoplasmic side. Cytoplasm. Note=Membrane associated on endosomes (PubMed:15545278). Detected in the envelope and the

core of lipid bodies and in lipid sails (PubMed:15545278)

PLIN3 / M6PRBP1 / TIP47 Antibody (Internal) - Protocols

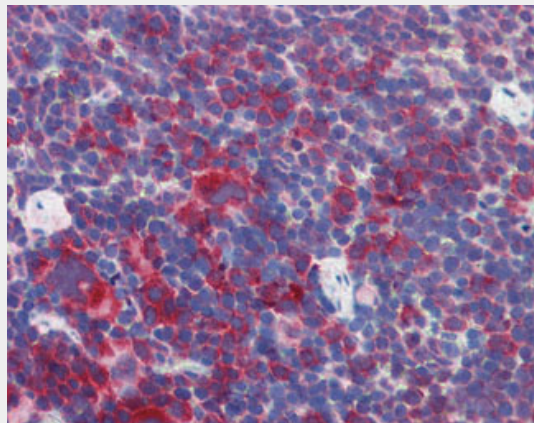
Provided below are standard protocols that you may find useful for product applications.

- [Western Blot](#)
- [Blocking Peptides](#)
- [Dot Blot](#)
- [Immunohistochemistry](#)
- [Immunofluorescence](#)
- [Immunoprecipitation](#)
- [Flow Cytometry](#)
- [Cell Culture](#)

PLIN3 / M6PRBP1 / TIP47 Antibody (Internal) - Images



Antibody (0.1 ug/ml) staining of Rat Skin lysate (35 ug protein in RIPA buffer).



Anti-PLIN3 / M6PRBP1 antibody IHC of mouse spleen.

PLIN3 / M6PRBP1 / TIP47 Antibody (Internal) - Background

Required for the transport of mannose 6-phosphate receptors (MPR) from endosomes to the trans-Golgi network.

PLIN3 / M6PRBP1 / TIP47 Antibody (Internal) - References

Diaz E.,et al.Cell 93:433-443(1998).
Than N.G.,et al.Eur. J. Biochem. 258:752-757(1998).
Than N.G.,et al.Tumor Biol. 20:184-192(1999).
Kalnine N.,et al.Submitted (MAY-2003) to the EMBL/GenBank/DDBJ databases.
Ota T.,et al.Nat. Genet. 36:40-45(2004).