

FIZZ1 / RELM-Beta Antibody (Internal)
Goat Polyclonal Antibody
Catalog # ALS12867**Specification**

FIZZ1 / RELM-Beta Antibody (Internal) - Product Information

Application	IHC
Primary Accession	O9BQ08
Reactivity	Human
Host	Goat
Clonality	Polyclonal
Calculated MW	12kDa KDa

FIZZ1 / RELM-Beta Antibody (Internal) - Additional Information**Gene ID** 84666**Other Names**

Resistin-like beta, Colon and small intestine-specific cysteine-rich protein, Colon carcinoma-related gene protein, Cysteine-rich secreted protein A12-alpha-like 1, Cysteine-rich secreted protein FIZZ2, RELMbeta, RETNLB, CCRG, FIZZ2, HXCP2, RETNL2

Target/Specificity

Human RETNLB / FIZZ1.

Reconstitution & Storage

Store at -20°C. Minimize freezing and thawing.

Precautions

FIZZ1 / RELM-Beta Antibody (Internal) is for research use only and not for use in diagnostic or therapeutic procedures.

FIZZ1 / RELM-Beta Antibody (Internal) - Protein Information**Name** RETNLB**Synonyms** CCRG, FIZZ2, HXCP2, RETNL2**Function**

Probable hormone.

Cellular Location

Secreted.

Tissue Location

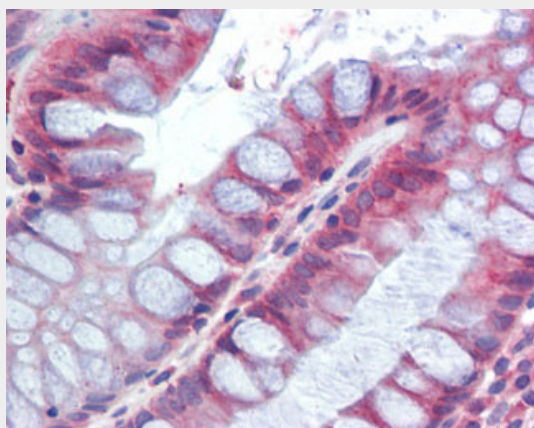
Expressed only in the gastrointestinal tract, particularly the colon

FIZZ1 / RELM-Beta Antibody (Internal) - Protocols

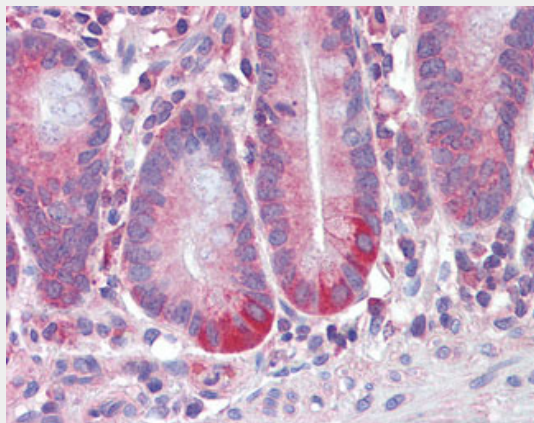
Provided below are standard protocols that you may find useful for product applications.

- [Western Blot](#)
- [Blocking Peptides](#)
- [Dot Blot](#)
- [Immunohistochemistry](#)
- [Immunofluorescence](#)
- [Immunoprecipitation](#)
- [Flow Cytometry](#)
- [Cell Culture](#)

FIZZ1 / RELM-Beta Antibody (Internal) - Images



Anti-RETNLB / FIZZ1 antibody IHC of human colon.



Anti-RETNLB / FIZZ1 antibody IHC of human small intestine.

FIZZ1 / RELM-Beta Antibody (Internal) - Background

Probable hormone.

FIZZ1 / RELM-Beta Antibody (Internal) - References

- Kubota T., et al. *Blood* 96:3953-3957(2000).
Steppan C.M., et al. *Proc. Natl. Acad. Sci. U.S.A.* 98:502-506(2001).
Rajala M.W., et al. Submitted (JUL-2000) to the EMBL/GenBank/DDBJ databases.
De Young M.P., et al. *In Vivo* 16:239-248(2002).

Clark H.F., et al. Genome Res. 13:2265-2270(2003).