

VEGFA / VEGF Antibody (clone VG-1)
Mouse Monoclonal Antibody
Catalog # ALS12842**Specification**

VEGFA / VEGF Antibody (clone VG-1) - Product Information

Application	IHC
Primary Accession	P15692
Reactivity	Human
Host	Mouse
Clonality	Monoclonal
Calculated MW	27kDa KDa

VEGFA / VEGF Antibody (clone VG-1) - Additional Information**Gene ID** 7422**Other Names**

Vascular endothelial growth factor A, VEGF-A, Vascular permeability factor, VPF, VEGFA, VEGF

Target/Specificity

the 121, 165, and 189 VEGF isoforms of Human origin

Reconstitution & Storage

Store at +4°C. DO NOT FREEZE.

Precautions

VEGFA / VEGF Antibody (clone VG-1) is for research use only and not for use in diagnostic or therapeutic procedures.

VEGFA / VEGF Antibody (clone VG-1) - Protein Information**Name** VEGFA**Synonyms** VEGF**Function**

[N-VEGF]: Participates in the induction of key genes involved in the response to hypoxia and in the induction of angiogenesis such as HIF1A (PubMed:35455969). Involved in protecting cells from hypoxia- mediated cell death (By similarity).

Cellular Location

[N-VEGF]: Cytoplasm. Nucleus. Note=Cytoplasmic in normoxic conditions and localizes to the nucleus under hypoxic conditions [Isoform L-VEGF189]: Endoplasmic reticulum. Golgi apparatus. Secreted, extracellular space, extracellular matrix [Isoform VEGF165]: Secreted

Tissue Location

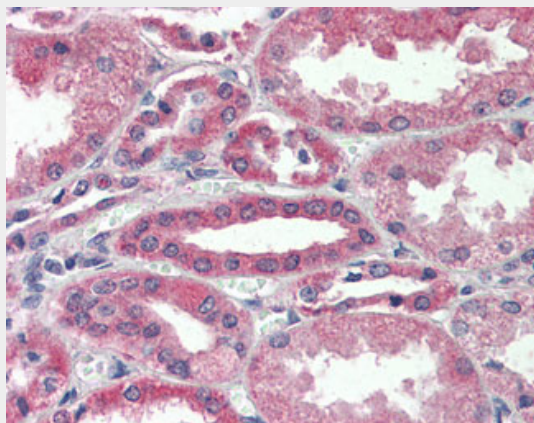
Higher expression in pituitary tumors than the pituitary gland. [Isoform VEGF165]: Widely expressed. [Isoform VEGF206]: Not widely expressed.

VEGFA / VEGF Antibody (clone VG-1) - Protocols

Provided below are standard protocols that you may find useful for product applications.

- [Western Blot](#)
- [Blocking Peptides](#)
- [Dot Blot](#)
- [Immunohistochemistry](#)
- [Immunofluorescence](#)
- [Immunoprecipitation](#)
- [Flow Cytometry](#)
- [Cell Culture](#)

VEGFA / VEGF Antibody (clone VG-1) - Images



Anti-VEGFA antibody IHC of human kidney.

VEGFA / VEGF Antibody (clone VG-1) - Background

Growth factor active in angiogenesis, vasculogenesis and endothelial cell growth. Induces endothelial cell proliferation, promotes cell migration, inhibits apoptosis and induces permeabilization of blood vessels. Binds to the FLT1/VEGFR1 and KDR/VEGFR2 receptors, heparan sulfate and heparin. NRP1/Neuropilin-1 binds isoforms VEGF-165 and VEGF-145. Isoform VEGF165B binds to KDR but does not activate downstream signaling pathways, does not activate angiogenesis and inhibits tumor growth.

VEGFA / VEGF Antibody (clone VG-1) - References

- Leung D.W., et al. *Science* 246:1306-1309(1989).
Keck P.J., et al. *Science* 246:1309-1312(1989).
Tischer E., et al. *J. Biol. Chem.* 266:11947-11954(1991).
Houck K.A., et al. *Mol. Endocrinol.* 5:1806-1814(1991).
Weindel K., et al. *Biochem. Biophys. Res. Commun.* 183:1167-1174(1992).