

**MMP9 / Gelatinase B Antibody (Internal)**  
**Rabbit Polyclonal Antibody**  
**Catalog # ALS12805****Specification**

---

**MMP9 / Gelatinase B Antibody (Internal) - Product Information**

Application	IHC
Primary Accession	<a href="#">P14780</a>
Reactivity	Human, Guinea Pig
Host	Rabbit
Clonality	Polyclonal
Calculated MW	78kDa KDa

**MMP9 / Gelatinase B Antibody (Internal) - Additional Information****Gene ID** 4318**Other Names**

Matrix metalloproteinase-9, MMP-9, 3.4.24.35, 92 kDa gelatinase, 92 kDa type IV collagenase, Gelatinase B, GELB, 67 kDa matrix metalloproteinase-9, 82 kDa matrix metalloproteinase-9, MMP9, CLG4B

**Target/Specificity**

Recognizes pro (latent) and activated forms of human MMP-9 at 92kD and ~86kD, respectively. Shows no cross-reaction with pro and active forms of other MMPs.

**Reconstitution & Storage**

Long term: Add glycerol (40-50%) -20°C; Short term: +4°C

**Precautions**

MMP9 / Gelatinase B Antibody (Internal) is for research use only and not for use in diagnostic or therapeutic procedures.

**MMP9 / Gelatinase B Antibody (Internal) - Protein Information****Name** MMP9**Synonyms** CLG4B**Function**

Matrix metalloproteinase that plays an essential role in local proteolysis of the extracellular matrix and in leukocyte migration (PubMed: [12879005](http://www.uniprot.org/citations/12879005)), PubMed: [1480034](http://www.uniprot.org/citations/1480034)), PubMed: [2551898](http://www.uniprot.org/citations/2551898)). Could play a role in bone osteoclastic resorption (By similarity). Cleaves KiSS1 at a Gly-|-Leu bond (PubMed: [12879005](http://www.uniprot.org/citations/12879005)). Cleaves NINJ1 to generate the Secreted ninjurin-1 form (PubMed: [32883094](http://www.uniprot.org/citations/32883094)).

Cleaves type IV and type V collagen into large C-terminal three quarter fragments and shorter N-terminal one quarter fragments (PubMed:<a href="http://www.uniprot.org/citations/1480034" target="\_blank">1480034</a>). Degrades fibronectin but not laminin or Pz-peptide.

#### **Cellular Location**

Secreted, extracellular space, extracellular matrix

#### **Tissue Location**

Detected in neutrophils (at protein level) (PubMed:7683678). Produced by normal alveolar macrophages and granulocytes.

#### **Volume**

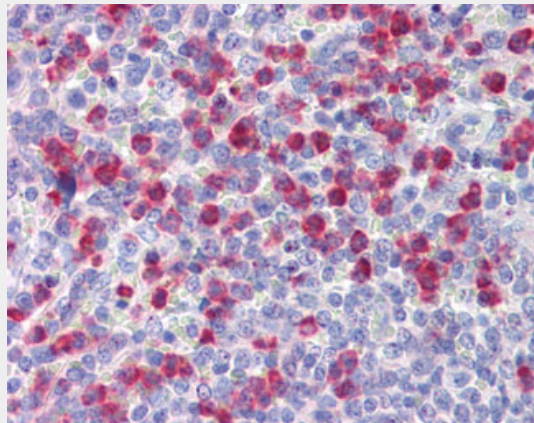
250 µl

### **MMP9 / Gelatinase B Antibody (Internal) - Protocols**

Provided below are standard protocols that you may find useful for product applications.

- [Western Blot](#)
- [Blocking Peptides](#)
- [Dot Blot](#)
- [Immunohistochemistry](#)
- [Immunofluorescence](#)
- [Immunoprecipitation](#)
- [Flow Cytometry](#)
- [Cell Culture](#)

### **MMP9 / Gelatinase B Antibody (Internal) - Images**



Anti-MMP-9 antibody IHC of human spleen.

### **MMP9 / Gelatinase B Antibody (Internal) - Background**

May play an essential role in local proteolysis of the extracellular matrix and in leukocyte migration. Could play a role in bone osteoclastic resorption. Cleaves KiSS1 at a Gly-|-Leu bond. Cleaves type IV and type V collagen into large C-terminal three quarter fragments and shorter N-terminal one quarter fragments. Degrades fibronectin but not laminin or Pz-peptide.

### **MMP9 / Gelatinase B Antibody (Internal) - References**

Wilhelm S.M., et al. J. Biol. Chem. 264:17213-17221(1989).

Huhtala P., et al. J. Biol. Chem. 266:16485-16490(1991).  
Ota T., et al. Nat. Genet. 36:40-45(2004).  
Deloukas P., et al. Nature 414:865-871(2001).  
Sato H., et al. Oncogene 8:395-405(1993).