

**ID3 Antibody (C-Terminus)**  
**Rabbit Polyclonal Antibody**  
**Catalog # ALS12796**

**Specification**

---

**ID3 Antibody (C-Terminus) - Product Information**

Application	IHC
Primary Accession	<a href="#">Q02535</a>
Reactivity	Human
Host	Rabbit
Clonality	Polyclonal
Calculated MW	13kDa KDa

**ID3 Antibody (C-Terminus) - Additional Information**

**Gene ID** 3399

**Other Names**

DNA-binding protein inhibitor ID-3, Class B basic helix-loop-helix protein 25, bHLHb25, Helix-loop-helix protein HEIR-1, ID-like protein inhibitor HLH 1R21, Inhibitor of DNA binding 3, Inhibitor of differentiation 3, ID3, 1R21, BHLHB25, HEIR1

**Reconstitution & Storage**

Store at 2°C to 8°C degrees. Do not freeze.

**Precautions**

ID3 Antibody (C-Terminus) is for research use only and not for use in diagnostic or therapeutic procedures.

**ID3 Antibody (C-Terminus) - Protein Information**

**Name** ID3

**Synonyms** 1R21, BHLHB25, HEIR1

**Function**

Transcriptional regulator (lacking a basic DNA binding domain) which negatively regulates the basic helix-loop-helix (bHLH) transcription factors by forming heterodimers and inhibiting their DNA binding and transcriptional activity. Implicated in regulating a variety of cellular processes, including cellular growth, senescence, differentiation, apoptosis, angiogenesis, and neoplastic transformation. Involved in myogenesis by inhibiting skeletal muscle and cardiac myocyte differentiation and promoting muscle precursor cells proliferation. Inhibits the binding of E2A-containing protein complexes to muscle creatine kinase E-box enhancer. Regulates the circadian clock by repressing the transcriptional activator activity of the CLOCK-BMAL1 heterodimer.

**Cellular Location**

Nucleus.

### Tissue Location

Expressed abundantly in lung, kidney and adrenal gland, but not in adult brain

### Volume

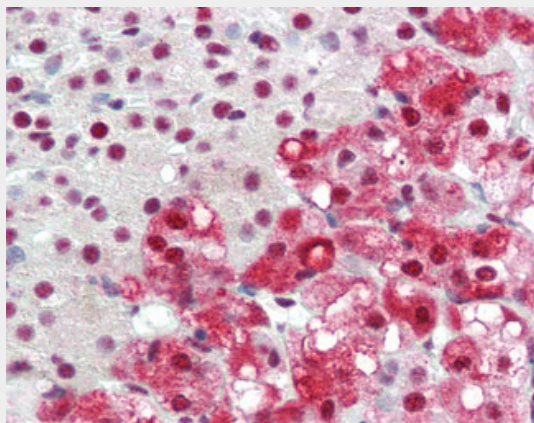
500  $\mu$ l

### ID3 Antibody (C-Terminus) - Protocols

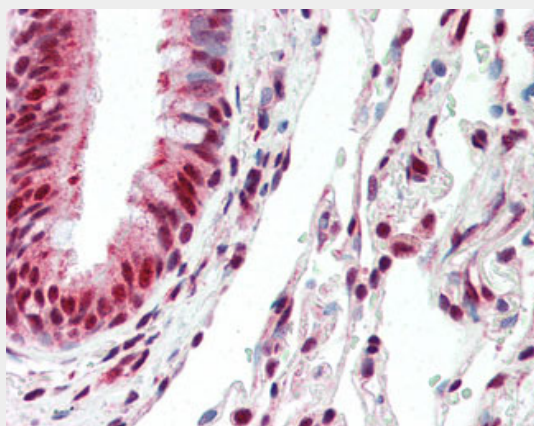
Provided below are standard protocols that you may find useful for product applications.

- [Western Blot](#)
- [Blocking Peptides](#)
- [Dot Blot](#)
- [Immunohistochemistry](#)
- [Immunofluorescence](#)
- [Immunoprecipitation](#)
- [Flow Cytometry](#)
- [Cell Culture](#)

### ID3 Antibody (C-Terminus) - Images



Anti-ID3 antibody IHC of human adrenal.



Anti-ID3 antibody IHC of human lung.

### ID3 Antibody (C-Terminus) - Background

Transcriptional regulator (lacking a basic DNA binding domain) which negatively regulates the basic helix-loop-helix (bHLH) transcription factors by forming heterodimers and inhibiting their DNA binding and transcriptional activity. Implicated in regulating a variety of cellular processes, including cellular growth, senescence, differentiation, apoptosis, angiogenesis, and neoplastic transformation. Involved in myogenesis by inhibiting skeletal muscle and cardiac myocyte differentiation and promoting muscle precursor cells proliferation. Inhibits the binding of E2A-containing protein complexes to muscle creatine kinase E-box enhancer. Regulates the circadian clock by repressing the transcriptional activator activity of the CLOCK-ARNTL/BMAL1 heterodimer.

### **ID3 Antibody (C-Terminus) - References**

- Ellmeier W., et al. EMBO J. 11:2563-2571(1992).  
Deed R.W., et al. Oncogene 8:599-607(1993).  
Deed R.W., et al. Gene 151:309-314(1994).  
Kalnine N., et al. Submitted (OCT-2004) to the EMBL/GenBank/DDBJ databases.  
Ota T., et al. Nat. Genet. 36:40-45(2004).