

SDC1 / Syndecan 1 / CD138 Antibody (aa18-218)
Rabbit Polyclonal Antibody
Catalog # ALS12781

Specification

SDC1 / Syndecan 1 / CD138 Antibody (aa18-218) - Product Information

Application	IHC
Primary Accession	P18827
Reactivity	Human
Host	Rabbit
Clonality	Polyclonal
Calculated MW	32kDa KDa

SDC1 / Syndecan 1 / CD138 Antibody (aa18-218) - Additional Information

Gene ID 6382

Other Names

Syndecan-1, SYND1, CD138, SDC1, SDC

Reconstitution & Storage

Store at 2°C to 8°C degrees. Do not freeze.

Precautions

SDC1 / Syndecan 1 / CD138 Antibody (aa18-218) is for research use only and not for use in diagnostic or therapeutic procedures.

SDC1 / Syndecan 1 / CD138 Antibody (aa18-218) - Protein Information

Name SDC1 ([HGNC:10658](#))

Synonyms SDC

Function

Cell surface proteoglycan that contains both heparan sulfate and chondroitin sulfate and that links the cytoskeleton to the interstitial matrix (By similarity). Regulates exosome biogenesis in concert with SDCBP and PDCD6IP (PubMed:22660413). Able to induce its own expression in dental mesenchymal cells and also in the neighboring dental epithelial cells via an MSX1-mediated pathway (By similarity).

Cellular Location

Membrane; Single-pass type I membrane protein. Secreted Secreted, extracellular exosome Note=Shedding of the ectodomain produces a soluble form

Tissue Location

Detected in placenta (at protein level) (PubMed:32337544). Detected in fibroblasts (at protein level) (PubMed:36213313).

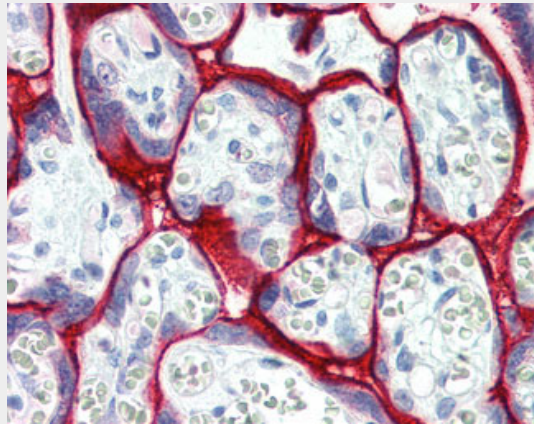
Volume
250 μ l

SDC1 / Syndecan 1 / CD138 Antibody (aa18-218) - Protocols

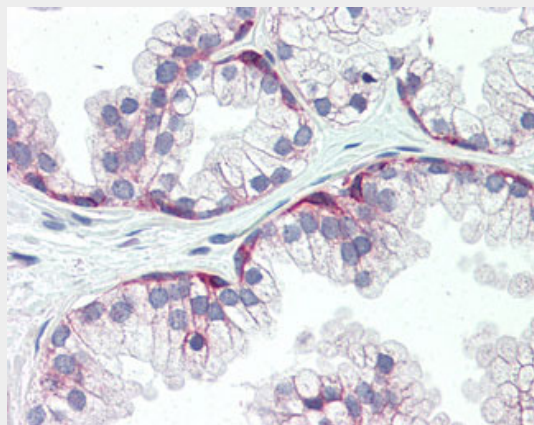
Provided below are standard protocols that you may find useful for product applications.

- [Western Blot](#)
- [Blocking Peptides](#)
- [Dot Blot](#)
- [Immunohistochemistry](#)
- [Immunofluorescence](#)
- [Immunoprecipitation](#)
- [Flow Cytometry](#)
- [Cell Culture](#)

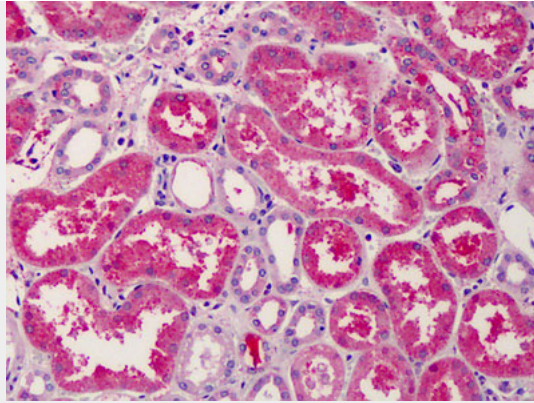
SDC1 / Syndecan 1 / CD138 Antibody (aa18-218) - Images



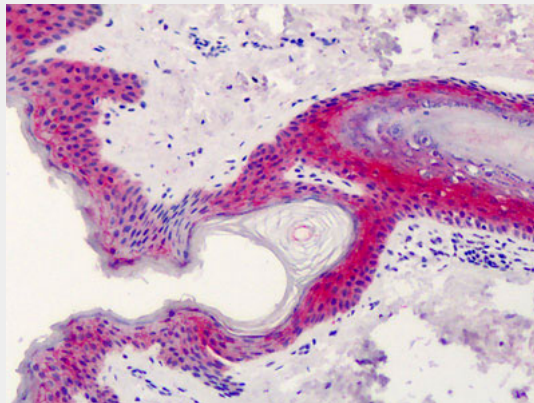
Anti-CD138 antibody IHC of human placenta.



Anti-CD138 antibody IHC of human prostate.



Anti-CD138 antibody IHC of human kidney.



Anti-CD138 antibody IHC of human skin.

SDC1 / Syndecan 1 / CD138 Antibody (aa18-218) - Background

Cell surface proteoglycan that bears both heparan sulfate and chondroitin sulfate and that links the cytoskeleton to the interstitial matrix.

SDC1 / Syndecan 1 / CD138 Antibody (aa18-218) - References

- Lories V.,et al.J. Biol. Chem. 267:1116-1122(1992).
- Mali M.,et al.J. Biol. Chem. 265:6884-6889(1990).
- Mennerich D.,et al.Eur. J. Cancer 40:1373-1382(2004).
- Hillier L.W.,et al.Nature 434:724-731(2005).
- Mural R.J.,et al.Submitted (SEP-2005) to the EMBL/GenBank/DDBJ databases.