

ACTA1 / ASMA Antibody (N-Terminus)
Rabbit Polyclonal Antibody
Catalog # ALS12779**Specification**

ACTA1 / ASMA Antibody (N-Terminus) - Product Information

Application	IHC
Primary Accession	P68133
Reactivity	Human, Rat, Rabbit, Sheep, Bovine, Guinea Pig
Host	Rabbit
Clonality	Polyclonal
Calculated MW	42kDa KDa

ACTA1 / ASMA Antibody (N-Terminus) - Additional Information**Gene ID 58****Other Names**

Actin, alpha skeletal muscle, Alpha-actin-1, ACTA1, ACTA

Reconstitution & Storage

Store at 2°C to 8°C degrees. Do not freeze.

Precautions

ACTA1 / ASMA Antibody (N-Terminus) is for research use only and not for use in diagnostic or therapeutic procedures.

ACTA1 / ASMA Antibody (N-Terminus) - Protein Information**Name** ACTA1**Synonyms** ACTA**Function**

Actins are highly conserved proteins that are involved in various types of cell motility and are ubiquitously expressed in all eukaryotic cells.

Cellular Location

Cytoplasm, cytoskeleton.

Volume

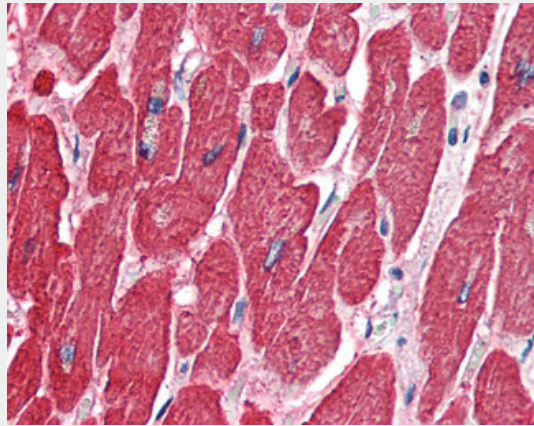
250 µl

ACTA1 / ASMA Antibody (N-Terminus) - Protocols

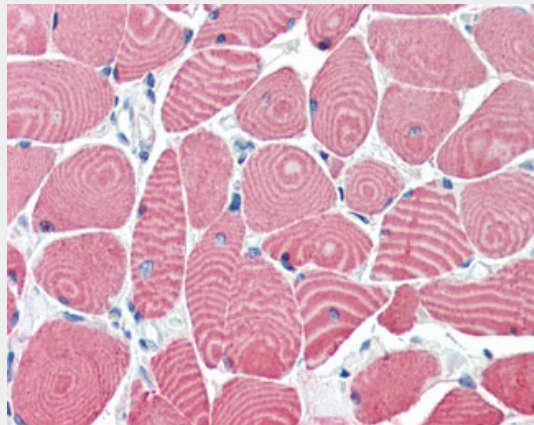
Provided below are standard protocols that you may find useful for product applications.

- [Western Blot](#)
- [Blocking Peptides](#)
- [Dot Blot](#)
- [Immunohistochemistry](#)
- [Immunofluorescence](#)
- [Immunoprecipitation](#)
- [Flow Cytometry](#)
- [Cell Culture](#)

ACTA1 / ASMA Antibody (N-Terminus) - Images



Anti-ACTA1 / ASMA antibody IHC of human heart.



Anti-ACTA1 / ASMA antibody IHC of human skeletal muscle.

ACTA1 / ASMA Antibody (N-Terminus) - Background

Actins are highly conserved proteins that are involved in various types of cell motility and are ubiquitously expressed in all eukaryotic cells.

ACTA1 / ASMA Antibody (N-Terminus) - References

Hanauer A., et al. *Nucleic Acids Res.* 11:3503-3516(1983).
Taylor A., et al. *Genomics* 3:323-336(1988).
Nowak K.J., et al. *Nat. Genet.* 23:208-212(1999).
Ebert L., et al. Submitted (JUN-2004) to the EMBL/GenBank/DDBJ databases.
Gregory S.G., et al. *Nature* 441:315-321(2006).

