

CCNE1 / Cyclin E1 Antibody (C-Terminus)
Rabbit Polyclonal Antibody
Catalog # ALS12777

Specification

CCNE1 / Cyclin E1 Antibody (C-Terminus) - Product Information

Application	IHC
Primary Accession	P24864
Reactivity	Human, Mouse
Host	Rabbit
Clonality	Polyclonal
Calculated MW	47kDa KDa

CCNE1 / Cyclin E1 Antibody (C-Terminus) - Additional Information

Gene ID 898

Other Names

G1/S-specific cyclin-E1, CCNE1, CCNE

Reconstitution & Storage

Store at 2°C to 8°C degrees. Do not freeze.

Precautions

CCNE1 / Cyclin E1 Antibody (C-Terminus) is for research use only and not for use in diagnostic or therapeutic procedures.

CCNE1 / Cyclin E1 Antibody (C-Terminus) - Protein Information

Name CCNE1

Synonyms CCNE

Function

Essential for the control of the cell cycle at the G1/S (start) transition.

Cellular Location

Nucleus.

Tissue Location

Highly expressed in testis and placenta. Low levels in bronchial epithelial cells.

Volume

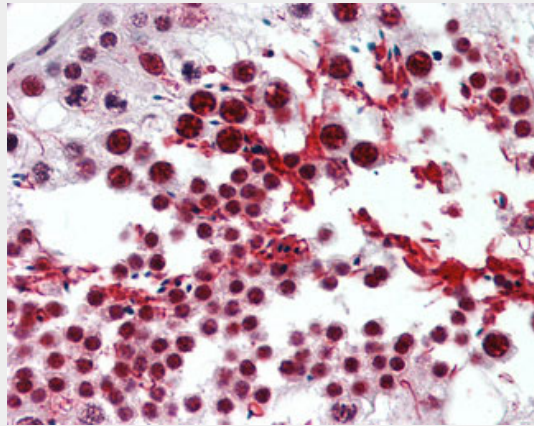
250 µl

CCNE1 / Cyclin E1 Antibody (C-Terminus) - Protocols

Provided below are standard protocols that you may find useful for product applications.

- [Western Blot](#)
- [Blocking Peptides](#)
- [Dot Blot](#)
- [Immunohistochemistry](#)
- [Immunofluorescence](#)
- [Immunoprecipitation](#)
- [Flow Cytometry](#)
- [Cell Culture](#)

CCNE1 / Cyclin E1 Antibody (C-Terminus) - Images



Anti-CCNE1 / Cyclin E1 antibody IHC of human testis.

CCNE1 / Cyclin E1 Antibody (C-Terminus) - Background

Essential for the control of the cell cycle at the G1/S (start) transition.

CCNE1 / Cyclin E1 Antibody (C-Terminus) - References

- Lew D.J., et al. Cell 66:1197-1206(1991).
Koff A., et al. Cell 66:1217-1228(1991).
Ohtsubo M., et al. Mol. Cell. Biol. 15:2612-2624(1995).
Ota T., et al. Nat. Genet. 36:40-45(2004).
Geng Y., et al. Oncogene 12:1173-1180(1996).