

**CTSD / Cathepsin D Antibody**  
**Rabbit Polyclonal Antibody**  
**Catalog # ALS12768****Specification**

---

**CTSD / Cathepsin D Antibody - Product Information**

Application	IHC
Primary Accession	<a href="#">P07339</a>
Reactivity	Human
Host	Rabbit
Clonality	Polyclonal
Calculated MW	45kDa KDa

**CTSD / Cathepsin D Antibody - Additional Information****Gene ID** 1509**Other Names**

Cathepsin D, 3.4.23.5, Cathepsin D light chain, Cathepsin D heavy chain, CTSD, CPSD

**Reconstitution & Storage**

Store at 2°C to 8°C degrees. Do not freeze.

**Precautions**

CTSD / Cathepsin D Antibody is for research use only and not for use in diagnostic or therapeutic procedures.

**CTSD / Cathepsin D Antibody - Protein Information****Name** CTSD**Synonyms** CPSD**Function**

Acid protease active in intracellular protein breakdown. Plays a role in APP processing following cleavage and activation by ADAM30 which leads to APP degradation (PubMed:&lt;a href="http://www.uniprot.org/citations/27333034" target="\_blank"&gt;27333034&lt;/a&gt;). Involved in the pathogenesis of several diseases such as breast cancer and possibly Alzheimer disease.

**Cellular Location**

Lysosome. Melanosome. Secreted, extracellular space. Note=Identified by mass spectrometry in melanosome fractions from stage I to stage IV. In aortic samples, detected as an extracellular protein loosely bound to the matrix (PubMed:20551380)

**Tissue Location**

Expressed in the aorta extracellular space (at protein level) (PubMed:20551380). Expressed in liver (at protein level) (PubMed:1426530).

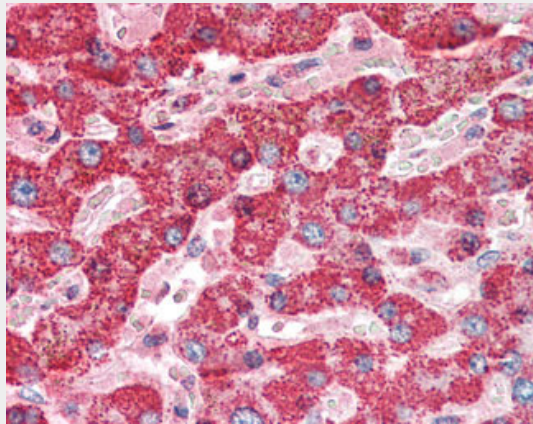
**Volume**  
250 µl

### **CTSD / Cathepsin D Antibody - Protocols**

Provided below are standard protocols that you may find useful for product applications.

- [Western Blot](#)
- [Blocking Peptides](#)
- [Dot Blot](#)
- [Immunohistochemistry](#)
- [Immunofluorescence](#)
- [Immunoprecipitation](#)
- [Flow Cytometry](#)
- [Cell Culture](#)

### **CTSD / Cathepsin D Antibody - Images**



Anti-Cathepsin D antibody IHC of human liver.

### **CTSD / Cathepsin D Antibody - Background**

Acid protease active in intracellular protein breakdown. Involved in the pathogenesis of several diseases such as breast cancer and possibly Alzheimer disease.

### **CTSD / Cathepsin D Antibody - References**

- Faust P.L., et al. Proc. Natl. Acad. Sci. U.S.A. 82:4910-4914(1985).  
Westley B.R., et al. Nucleic Acids Res. 15:3773-3786(1987).  
Redecker B., et al. DNA Cell Biol. 10:423-431(1991).  
Ebert L., et al. Submitted (JUN-2004) to the EMBL/GenBank/DDBJ databases.  
Kalnina N., et al. Submitted (OCT-2004) to the EMBL/GenBank/DDBJ databases.