

Insulin Antibody
Mouse Monoclonal Antibody
Catalog # ALS12753**Specification**

Insulin Antibody - Product Information

Application	IHC
Primary Accession	P01308
Reactivity	Human
Host	Mouse
Clonality	Monoclonal
Calculated MW	12kDa KDa

Insulin Antibody - Additional Information**Gene ID** 3630**Other Names**

Insulin, Insulin B chain, Insulin A chain, INS

Target/Specificity

Recognizes Insulin: 100%, Pro-Insulin: 0.2 %.

Reconstitution & Storage

Long term: -20°C; Short term: +4°C; Avoid freeze-thaw cycles.

Precautions

Insulin Antibody is for research use only and not for use in diagnostic or therapeutic procedures.

Insulin Antibody - Protein Information**Name** INS**Function**

Insulin decreases blood glucose concentration. It increases cell permeability to monosaccharides, amino acids and fatty acids. It accelerates glycolysis, the pentose phosphate cycle, and glycogen synthesis in liver.

Cellular Location

Secreted.

Volume

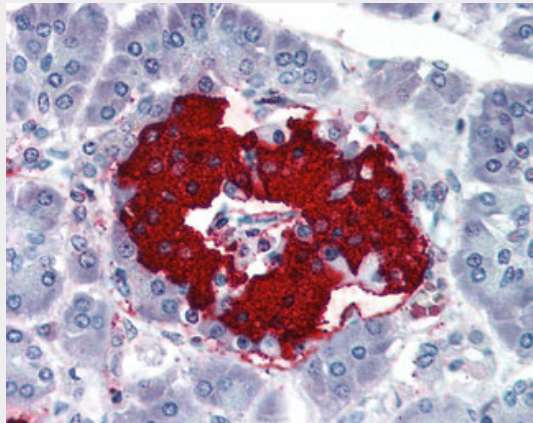
25 tst

Insulin Antibody - Protocols

Provided below are standard protocols that you may find useful for product applications.

- [Western Blot](#)
- [Blocking Peptides](#)
- [Dot Blot](#)
- [Immunohistochemistry](#)
- [Immunofluorescence](#)
- [Immunoprecipitation](#)
- [Flow Cytometry](#)
- [Cell Culture](#)

Insulin Antibody - Images



Anti-Insulin antibody IHC of human pancreas.

Insulin Antibody - Background

Insulin decreases blood glucose concentration. It increases cell permeability to monosaccharides, amino acids and fatty acids. It accelerates glycolysis, the pentose phosphate cycle, and glycogen synthesis in liver.

Insulin Antibody - References

- Bell G.I.,et al.Nature 284:26-32(1980).
Ullrich A.,et al.Science 209:612-615(1980).
Bell G.I.,et al.Nature 282:525-527(1979).
Sures I.,et al.Science 208:57-59(1980).
Lucassen A.M.,et al.Nat. Genet. 4:305-310(1993).