

Complement C6 Antibody (C-Terminus, clone 056B-214.2.4.2)
Mouse Monoclonal Antibody
Catalog # ALS12751

Specification

Complement C6 Antibody (C-Terminus, clone 056B-214.2.4.2) - Product Information

Application	IHC
Primary Accession	P13671
Reactivity	Human
Host	Mouse
Clonality	Monoclonal
Calculated MW	105kDa KDa

Complement C6 Antibody (C-Terminus, clone 056B-214.2.4.2) - Additional Information

Gene ID 729

Other Names

Complement component C6, C6

Target/Specificity

Recognizes complement component 6 (C6) a 104 kD member of the complement C6/C7/C8/C9 family present in blood serum. The factor I modules of C6 bind the C terminus of the C5b alpha-chain, anchoring the molecule to the membrane and also binds complemen ...

Reconstitution & Storage

+4°C or -20°C, Avoid repeated freezing and thawing. Store undiluted.

Precautions

Complement C6 Antibody (C-Terminus, clone 056B-214.2.4.2) is for research use only and not for use in diagnostic or therapeutic procedures.

Complement C6 Antibody (C-Terminus, clone 056B-214.2.4.2) - Protein Information

Name C6

Function

Constituent of the membrane attack complex (MAC) that plays a key role in the innate and adaptive immune response by forming pores in the plasma membrane of target cells.

Cellular Location

Secreted.

Volume

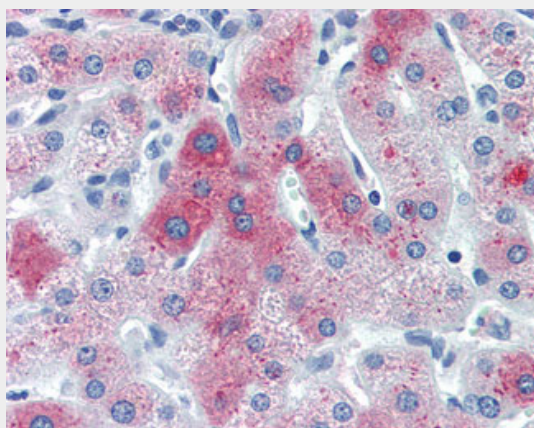
250 µl

Complement C6 Antibody (C-Terminus, clone 056B-214.2.4.2) - Protocols

Provided below are standard protocols that you may find useful for product applications.

- [Western Blot](#)
- [Blocking Peptides](#)
- [Dot Blot](#)
- [Immunohistochemistry](#)
- [Immunofluorescence](#)
- [Immunoprecipitation](#)
- [Flow Cytometry](#)
- [Cell Culture](#)

Complement C6 Antibody (C-Terminus, clone 056B-214.2.4.2) - Images



Anti-C6 / Complement C6 antibody IHC of human liver.

Complement C6 Antibody (C-Terminus, clone 056B-214.2.4.2) - Background

Constituent of the membrane attack complex (MAC) that plays a key role in the innate and adaptive immune response by forming pores in the plasma membrane of target cells.

Complement C6 Antibody (C-Terminus, clone 056B-214.2.4.2) - References

- Haefliger J.-A., et al. *J. Biol. Chem.* 264:18041-18051(1989).
Discipio R.G., et al. *J. Biol. Chem.* 264:16197-16206(1989).
Hobart M.J., et al. *Biochemistry* 32:6198-6205(1993).
Soejima M., et al. Submitted (NOV-2003) to the EMBL/GenBank/DDBJ databases.
Schmutz J., et al. *Nature* 431:268-274(2004).