

**SCG10 / STMN2 Antibody**  
**Goat Polyclonal Antibody**  
**Catalog # ALS12745**

**Specification**

---

**SCG10 / STMN2 Antibody - Product Information**

Application	IHC
Primary Accession	<a href="#">Q93045</a>
Reactivity	Human, Mouse, Rat, Rabbit, Hamster, Monkey, Chicken, Horse, Bovine, Dog
Host	Goat
Clonality	Polyclonal
Calculated MW	21kDa KDa

**SCG10 / STMN2 Antibody - Additional Information**

**Gene ID** 11075

**Other Names**

Stathmin-2, Superior cervical ganglion-10 protein, Protein SCG10, STMN2, SCG10, SCGN10

**Target/Specificity**

Human STMN2.

**Reconstitution & Storage**

Short term 4°C, long term aliquot and store at -20°C, avoid freeze thaw cycles.

**Precautions**

SCG10 / STMN2 Antibody is for research use only and not for use in diagnostic or therapeutic procedures.

**SCG10 / STMN2 Antibody - Protein Information**

**Name** STMN2

**Synonyms** SCG10, SCGN10

**Function**

Regulator of microtubule stability. When phosphorylated by MAPK8, stabilizes microtubules and consequently controls neurite length in cortical neurons. In the developing brain, negatively regulates the rate of exit from multipolar stage and retards radial migration from the ventricular zone (By similarity).

**Cellular Location**

Cytoplasm. Cytoplasm, perinuclear region. Cell projection, growth cone. Membrane; Peripheral membrane protein; Cytoplasmic side. Cell projection, axon. Golgi apparatus. Endosome. Cell projection, lamellipodium. Note=Associated with punctate structures in the perinuclear cytoplasm, axons, and growth cones of developing neurons. SCG10 exists in both soluble and membrane-

bound forms. Colocalized with CIB1 in neurites of developing hippocampal primary neurons (By similarity). Colocalized with CIB1 in the cell body, neuritis and growth cones of neurons. Colocalized with CIB1 to the leading edge of lamellipodia.

#### **Tissue Location**

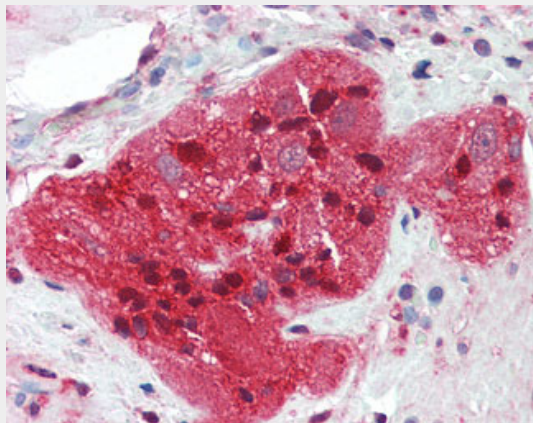
Neuron specific.

#### **SCG10 / STMN2 Antibody - Protocols**

Provided below are standard protocols that you may find useful for product applications.

- [Western Blot](#)
- [Blocking Peptides](#)
- [Dot Blot](#)
- [Immunohistochemistry](#)
- [Immunofluorescence](#)
- [Immunoprecipitation](#)
- [Flow Cytometry](#)
- [Cell Culture](#)

#### **SCG10 / STMN2 Antibody - Images**



Anti-STMN2 antibody IHC of human small intestine, myenteric plexus.

#### **SCG10 / STMN2 Antibody - Background**

Regulator of microtubule stability. When phosphorylated by MAPK8, stabilizes microtubules and consequently controls neurite length in cortical neurons. In the developing brain, negatively regulates the rate of exit from multipolar stage and retards radial migration from the ventricular zone (By similarity).

#### **SCG10 / STMN2 Antibody - References**

- Okazaki T., et al. *Neurobiol. Aging* 16:883-894(1995).  
Fujiwara T., et al. Submitted (APR-1995) to the EMBL/GenBank/DDBJ databases.  
Kalnine N., et al. Submitted (MAY-2003) to the EMBL/GenBank/DDBJ databases.  
Ebert L., et al. Submitted (JUN-2004) to the EMBL/GenBank/DDBJ databases.  
Ota T., et al. *Nat. Genet.* 36:40-45(2004).