

NOVA1 Antibody (Internal)
Goat Polyclonal Antibody
Catalog # ALS12732**Specification**

NOVA1 Antibody (Internal) - Product Information

Application	WB, IHC
Primary Accession	P51513
Reactivity	Human, Mouse, Rat, Rabbit, Monkey, Pig, Chicken, Xenopus, Bovine, Dog
Host	Goat
Clonality	Polyclonal
Calculated MW	52kDa KDa

NOVA1 Antibody (Internal) - Additional Information**Gene ID** 4857**Other Names**

RNA-binding protein Nova-1, Neuro-oncological ventral antigen 1, Onconeural ventral antigen 1, Paraneoplastic Ri antigen, Ventral neuron-specific protein 1, NOVA1

Target/Specificity

Human NOVA1. This antibody is expected to recognise all three reported isoforms (NP_002506.2 ; NP_006480.2 ; NP_006482.1)

Reconstitution & Storage

Store at -20°C. Minimize freezing and thawing.

Precautions

NOVA1 Antibody (Internal) is for research use only and not for use in diagnostic or therapeutic procedures.

NOVA1 Antibody (Internal) - Protein Information**Name** NOVA1 ([HGNC:7886](#))**Function**

Functions to regulate alternative splicing in neurons by binding pre-mRNA in a sequence-specific manner to activate exon inclusion or exclusion. It binds specifically to the sequences 5'-YCAAY-3' and regulates splicing in only a subset of regulated exons (PubMed:10811881). Binding to an exonic 5'-YCAAY-3' cluster changes the protein complexes assembled on pre-mRNA, blocking U1 snRNP binding and exon inclusion, whereas binding to an intronic 5'-YCAAY-3' cluster enhances spliceosome assembly and exon inclusion. Binding to 5'-YCAAY-3' clusters results in a local and asymmetric action to regulate spliceosome assembly and alternative splicing in neurons. Binding to an exonic 5'-YCAAY-3' cluster changed the protein complexes assembled on pre-mRNA, blocking U1 snRNP (small nuclear ribonucleoprotein) binding and exon inclusion, whereas binding to an

intronic 5'-YCAAY-3' cluster enhanced spliceosome assembly and exon inclusion. With NOVA1, they perform unique biological functions in different brain areas and cell types. Autoregulates its own expression by acting as a splicing repressor. Acts to activate the inclusion of exon E3A in the glycine receptor alpha-2 chain and of exon E9 in gamma-aminobutyric-acid receptor gamma-2 subunit via a distal downstream UCAU-rich intronic splicing enhancer. Acts to regulate a novel glycine receptor alpha-2 chain splice variant (alpha-2N) in developing spinal cord (By similarity).

Cellular Location

Nucleus {ECO:0000250|UniProtKB:Q9JKN6}.

Tissue Location

Expressed in cerebellum, brain stem, hippocampus, and frontal cortex.

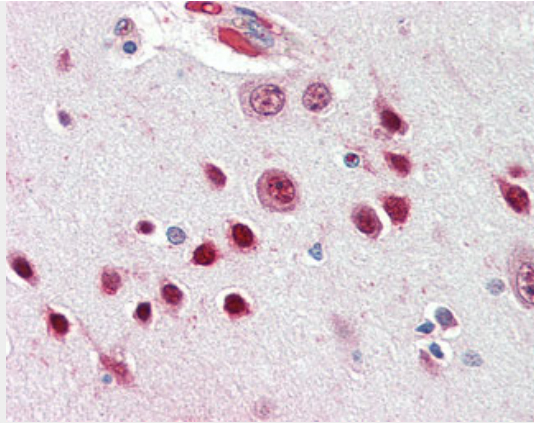
NOVA1 Antibody (Internal) - Protocols

Provided below are standard protocols that you may find useful for product applications.

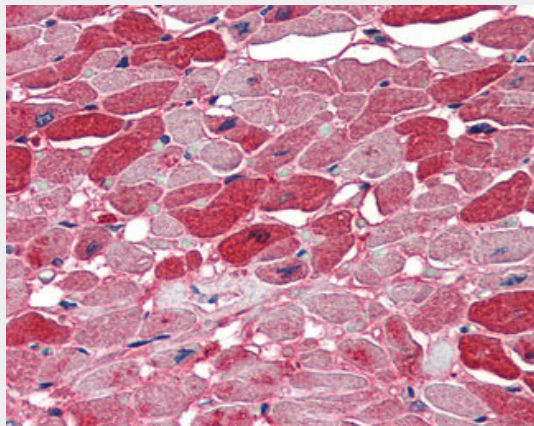
- [Western Blot](#)
- [Blocking Peptides](#)
- [Dot Blot](#)
- [Immunohistochemistry](#)
- [Immunofluorescence](#)
- [Immunoprecipitation](#)
- [Flow Cytometry](#)
- [Cell Culture](#)

NOVA1 Antibody (Internal) - Images

Antibody (0.01 ug/ml) staining of Human Breast Cancer lysate (35 ug protein in RIPA buffer).



Anti-NOVA1 antibody IHC of human brain, cortex.



Anti-NOVA1 antibody IHC of human heart.

NOVA1 Antibody (Internal) - Background

May regulate RNA splicing or metabolism in a specific subset of developing neurons.

NOVA1 Antibody (Internal) - References

- Buckanovich R.J.,et al.Neuron 11:657-672(1993).
- Ota T.,et al.Nat. Genet. 36:40-45(2004).
- Venter J.C.,et al.Science 291:1304-1351(2001).
- Mural R.J.,et al.Submitted (SEP-2005) to the EMBL/GenBank/DDBJ databases.
- Dmitrenko V.V.,et al.Submitted (APR-1996) to the EMBL/GenBank/DDBJ databases.