

GPX1 / Glutathione Peroxidase Antibody (Internal)
Goat Polyclonal Antibody
Catalog # ALS12717

Specification

GPX1 / Glutathione Peroxidase Antibody (Internal) - Product Information

Application	IHC
Primary Accession	P07203
Reactivity	Human, Monkey, Horse
Host	Goat
Clonality	Polyclonal
Calculated MW	22kDa KDa

GPX1 / Glutathione Peroxidase Antibody (Internal) - Additional Information

Gene ID 2876

Other Names

Glutathione peroxidase 1, GPx-1, GSHPx-1, 1.11.1.9, Cellular glutathione peroxidase, GPX1

Target/Specificity

Human GPX1. This antibody is expected to recognise isoform 1 (NP_000572.2) only.

Reconstitution & Storage

Store at -20°C. Minimize freezing and thawing.

Precautions

GPX1 / Glutathione Peroxidase Antibody (Internal) is for research use only and not for use in diagnostic or therapeutic procedures.

GPX1 / Glutathione Peroxidase Antibody (Internal) - Protein Information

Name GPX1 ([HGNC:4553](#))

Function

Catalyzes the reduction of hydroperoxides in a glutathione- dependent manner thus regulating cellular redox homeostasis (PubMed: [11115402](http://www.uniprot.org/citations/11115402), PubMed: [36608588](http://www.uniprot.org/citations/36608588)). Can reduce small soluble hydroperoxides such as H₂O₂, cumene hydroperoxide and tert-butyl hydroperoxide, as well as several fatty acid-derived hydroperoxides (PubMed: [11115402](http://www.uniprot.org/citations/11115402), PubMed: [36608588](http://www.uniprot.org/citations/36608588)). In platelets catalyzes the reduction of 12-hydroperoxyeicosatetraenoic acid, the primary product of the arachidonate 12-lipoxygenase pathway (PubMed: [11115402](http://www.uniprot.org/citations/11115402)).

Cellular Location

Cytoplasm {ECO:0000250|UniProtKB:P11352}. Mitochondrion {ECO:0000250|UniProtKB:P11352}

Tissue Location

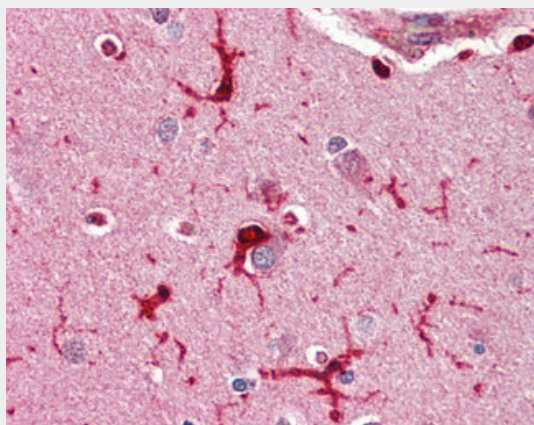
Expressed in platelets (at protein level).

GPX1 / Glutathione Peroxidase Antibody (Internal) - Protocols

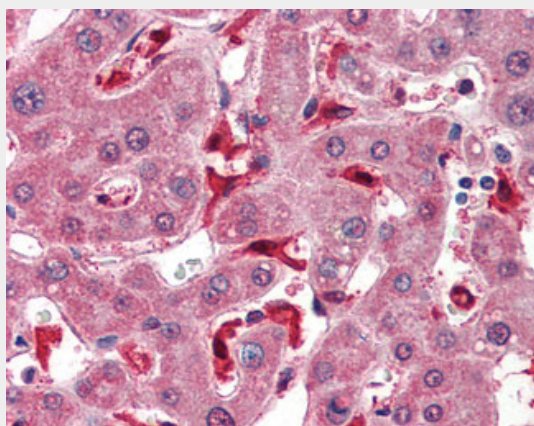
Provided below are standard protocols that you may find useful for product applications.

- [Western Blot](#)
- [Blocking Peptides](#)
- [Dot Blot](#)
- [Immunohistochemistry](#)
- [Immunofluorescence](#)
- [Immunoprecipitation](#)
- [Flow Cytometry](#)
- [Cell Culture](#)

GPX1 / Glutathione Peroxidase Antibody (Internal) - Images



Anti-GPX1 antibody IHC of human brain, cortex.



Anti-GPX1 antibody IHC of human liver.

GPX1 / Glutathione Peroxidase Antibody (Internal) - Background

Protects the hemoglobin in erythrocytes from oxidative breakdown.

GPX1 / Glutathione Peroxidase Antibody (Internal) - References

Sukenaga Y.,et al.Nucleic Acids Res. 15:7178-7178(1987).

Ishida K.,et al.Nucleic Acids Res. 15:10051-10051(1987).

Mullenbach G.T.,et al.Nucleic Acids Res. 15:5484-5484(1987).

Chada S.,et al.Genomics 6:268-271(1990).

Moscow J.A.,et al.J. Biol. Chem. 267:5949-5958(1992).