

LIMPII / SCARB2 Antibody (Internal)
Rabbit Polyclonal Antibody
Catalog # ALS12704**Specification**

LIMPII / SCARB2 Antibody (Internal) - Product Information

Application	WB, IF, IHC
Primary Accession	Q14108
Reactivity	Human, Mouse, Rat
Host	Rabbit
Clonality	Polyclonal
Calculated MW	54kDa KDa

LIMPII / SCARB2 Antibody (Internal) - Additional Information**Gene ID** 950**Other Names**

Lysosome membrane protein 2, 85 kDa lysosomal membrane sialoglycoprotein, LGP85, CD36 antigen-like 2, Lysosome membrane protein II, LIMP II, Scavenger receptor class B member 2, CD36, SCARB2, CD36L2, LIMP2, LIMPII

Reconstitution & Storage

Short term 4°C, long term aliquot and store at -20°C, avoid freeze thaw cycles. Store undiluted.

Precautions

LIMPII / SCARB2 Antibody (Internal) is for research use only and not for use in diagnostic or therapeutic procedures.

LIMPII / SCARB2 Antibody (Internal) - Protein Information**Name** SCARB2**Synonyms** CD36L2, LIMP2, LIMPII**Function**

Acts as a lysosomal receptor for glucosylceramidase (GBA1) targeting.

Cellular Location

Lysosome membrane; Multi-pass membrane protein

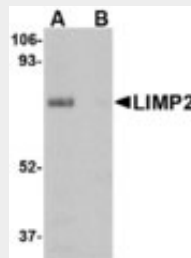
LIMPII / SCARB2 Antibody (Internal) - Protocols

Provided below are standard protocols that you may find useful for product applications.

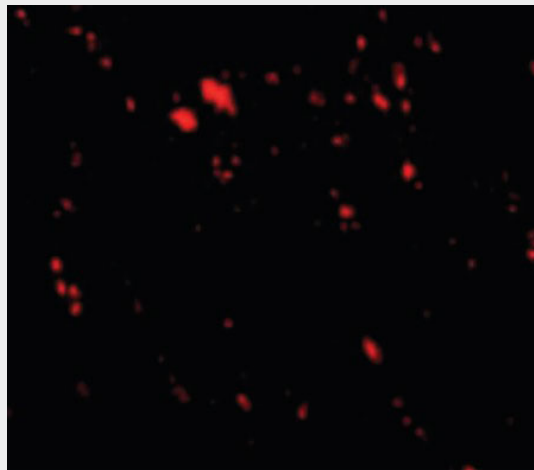
- [Western Blot](#)

- [Blocking Peptides](#)
- [Dot Blot](#)
- [Immunohistochemistry](#)
- [Immunofluorescence](#)
- [Immunoprecipitation](#)
- [Flow Cytometry](#)
- [Cell Culture](#)

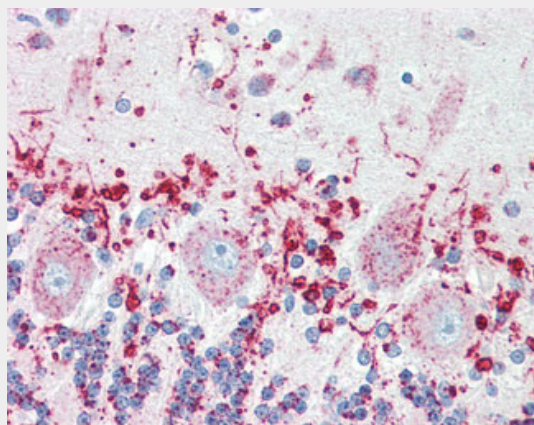
LIMP2 / SCARB2 Antibody (Internal) - Images



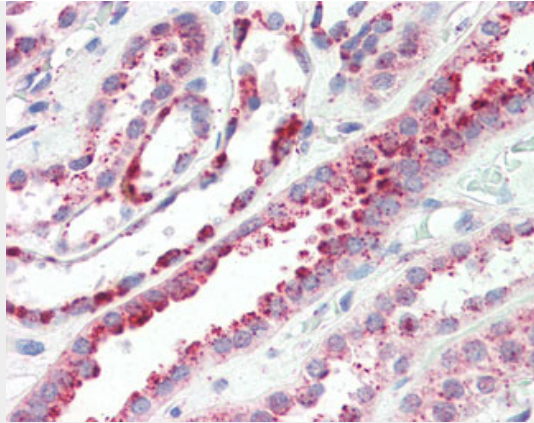
Western blot of LIMP2 in human skeletal muscle tissue lysate with LIMP2 antibody at 1 ug/ml in...



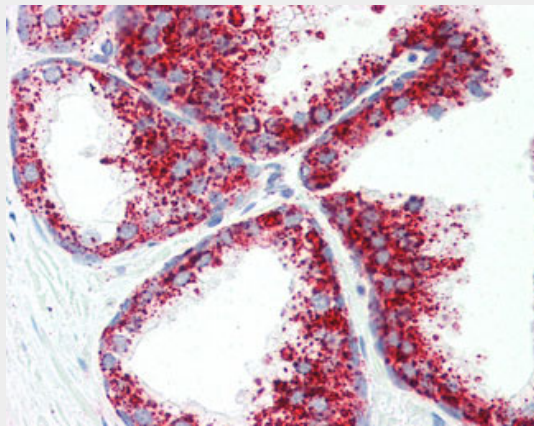
Immunofluorescence of LIMP2 in Human Skeletal Muscle cells with LIMP2 antibody at 20 ug/ml.



Anti-SCARB2 antibody IHC of human brain, cerebellum.



Anti-SCARB2 antibody IHC of human kidney.



Anti-SCARB2 antibody IHC of human prostate.

LIMPII / SCARB2 Antibody (Internal) - Background

Acts as a lysosomal receptor for glucosylceramidase (GBA) targeting.

LIMPII / SCARB2 Antibody (Internal) - References

Fujita H., et al. *Biochem. Biophys. Res. Commun.* 184:604-611(1992).
Calvo D., et al. *Genomics* 25:100-106(1995).
Kalnina N., et al. Submitted (MAY-2003) to the EMBL/GenBank/DDBJ databases.
Ota T., et al. *Nat. Genet.* 36:40-45(2004).
Hillier L.W., et al. *Nature* 434:724-731(2005).