

**KLK3 / PSA Antibody**  
**Rabbit Polyclonal Antibody**  
**Catalog # ALS12659****Specification**

---

**KLK3 / PSA Antibody - Product Information**

Application	IHC
Primary Accession	<a href="#">P07288</a>
Reactivity	Human
Host	Rabbit
Clonality	Polyclonal
Calculated MW	29kDa KDa

**KLK3 / PSA Antibody - Additional Information****Gene ID** 354**Other Names**

Prostate-specific antigen, PSA, 3.4.21.77, Gamma-seminoprotein, Seminolisin, Kallikrein-3, P-30 antigen, Semenogelase, KLK3, APS

**Target/Specificity**

Recognizes human Prostate Specific Antigen, Total. No cross-reactivity with human albumin, AFP, CEA, ferritin, hCG, PAP, CA125, CA15-3 or CA19-9.

**Reconstitution & Storage**

Long term: -20°C; Short term: +4°C. Avoid repeat freeze-thaw cycles.

**Precautions**

KLK3 / PSA Antibody is for research use only and not for use in diagnostic or therapeutic procedures.

**KLK3 / PSA Antibody - Protein Information****Name** KLK3**Synonyms** APS**Function**

Hydrolyzes semenogelin-1 thus leading to the liquefaction of the seminal coagulum.

**Cellular Location**

Secreted.

**Volume**

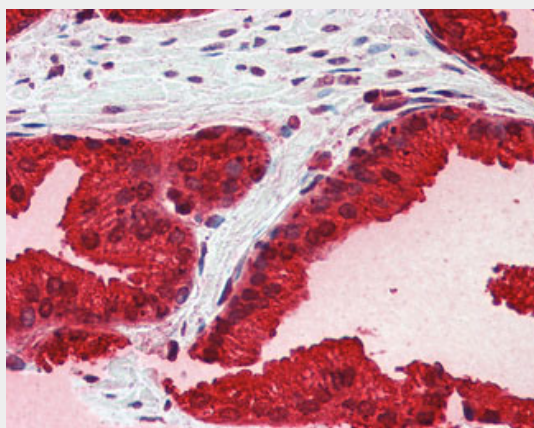
50 µl

## KLK3 / PSA Antibody - Protocols

Provided below are standard protocols that you may find useful for product applications.

- [Western Blot](#)
- [Blocking Peptides](#)
- [Dot Blot](#)
- [Immunohistochemistry](#)
- [Immunofluorescence](#)
- [Immunoprecipitation](#)
- [Flow Cytometry](#)
- [Cell Culture](#)

## KLK3 / PSA Antibody - Images



Anti-KLK3 / PSA antibody IHC of human prostate.

## KLK3 / PSA Antibody - Background

Hydrolyzes semenogelin-1 thus leading to the liquefaction of the seminal coagulum.

## KLK3 / PSA Antibody - References

- Lundwall A., et al. FEBS Lett. 214:317-322(1987).  
Digby M.R., et al. Nucleic Acids Res. 17:2137-2137(1989).  
Klobeck H.-G., et al. Nucleic Acids Res. 17:3981-3981(1989).  
Lundwall A., et al. Biochem. Biophys. Res. Commun. 161:1151-1159(1989).  
Henttu P., et al. Biochem. Biophys. Res. Commun. 160:903-910(1989).