

IVL / Involucrin Antibody (aa420-578)
Rabbit Polyclonal Antibody
Catalog # ALS12641

Specification

IVL / Involucrin Antibody (aa420-578) - Product Information

Application	IHC
Primary Accession	P07476
Reactivity	Human
Host	Rabbit
Clonality	Polyclonal
Calculated MW	68kDa KDa

IVL / Involucrin Antibody (aa420-578) - Additional Information

Gene ID 3713

Other Names
Involucrin, IVL

Reconstitution & Storage
2°C to 8°C

Precautions
IVL / Involucrin Antibody (aa420-578) is for research use only and not for use in diagnostic or therapeutic procedures.

IVL / Involucrin Antibody (aa420-578) - Protein Information

Name IVL

Function
Part of the insoluble cornified cell envelope (CE) of stratified squamous epithelia.

Cellular Location
Cytoplasm. Note=Constituent of the scaffolding of the cornified envelope

Tissue Location
Keratinocytes of epidermis and other stratified squamous epithelia

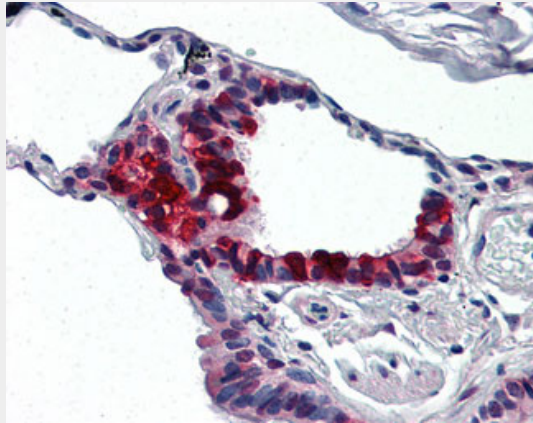
IVL / Involucrin Antibody (aa420-578) - Protocols

Provided below are standard protocols that you may find useful for product applications.

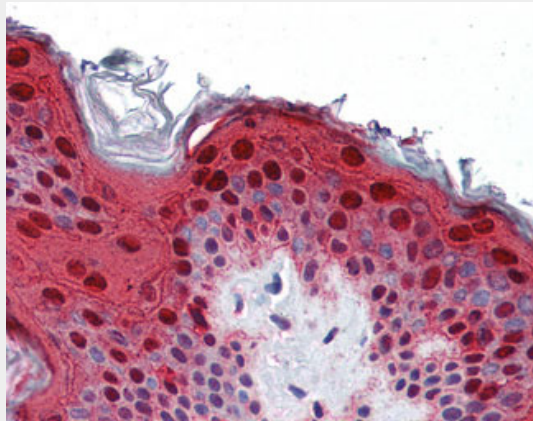
- [Western Blot](#)
- [Blocking Peptides](#)

- [Dot Blot](#)
- [Immunohistochemistry](#)
- [Immunofluorescence](#)
- [Immunoprecipitation](#)
- [Flow Cytometry](#)
- [Cell Culture](#)

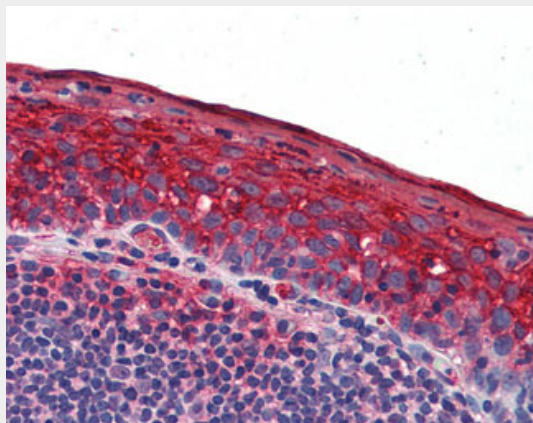
IVL / Involucrin Antibody (aa420-578) - Images



Anti-IVL / Involucrin antibody IHC of human lung.



Anti-IVL / Involucrin antibody IHC of human skin.



Anti-IVL / Involucrin antibody IHC of human tonsil.

IVL / Involucrin Antibody (aa420-578) - Background

Part of the insoluble cornified cell envelope (CE) of stratified squamous epithelia.

IVL / Involucrin Antibody (aa420-578) - References

- Eckert R.L.,et al.Cell 46:583-589(1986).
Gregory S.G.,et al.Nature 441:315-321(2006).
Robinson N.A.,et al.J. Biol. Chem. 272:12035-12046(1997).
Yaffe M.B.,et al.J. Biol. Chem. 267:12233-12238(1992).
Simon M.,et al.J. Biol. Chem. 263:18093-18098(1988).