

**PLIN1 / Perilipin Antibody (Internal)**  
**Goat Polyclonal Antibody**  
**Catalog # ALS12628**

**Specification**

---

**PLIN1 / Perilipin Antibody (Internal) - Product Information**

Application	IHC
Primary Accession	<a href="#">O60240</a>
Reactivity	Human, Monkey
Host	Goat
Clonality	Polyclonal
Calculated MW	56kDa KDa

**PLIN1 / Perilipin Antibody (Internal) - Additional Information**

**Gene ID** 5346

**Other Names**

Perilipin-1, Lipid droplet-associated protein, PLIN1, PERI, PLIN

**Target/Specificity**

Human PLIN1 / Perilipin.

**Reconstitution & Storage**

Store at -20°C. Minimize freezing and thawing.

**Precautions**

PLIN1 / Perilipin Antibody (Internal) is for research use only and not for use in diagnostic or therapeutic procedures.

**PLIN1 / Perilipin Antibody (Internal) - Protein Information**

**Name** PLIN1

**Synonyms** PERI, PLIN

**Function**

Modulator of adipocyte lipid metabolism. Coats lipid storage droplets to protect them from breakdown by hormone-sensitive lipase (HSL). Its absence may result in leanness. Plays a role in unilocular lipid droplet formation by activating CIDEC. Their interaction promotes lipid droplet enlargement and directional net neutral lipid transfer. May modulate lipolysis and triglyceride levels.

**Cellular Location**

Endoplasmic reticulum. Lipid droplet. Note=Lipid droplet surface-associated.

**Tissue Location**

Detected in adipocytes from white adipose tissue (at protein level) (PubMed:27832861). Detected

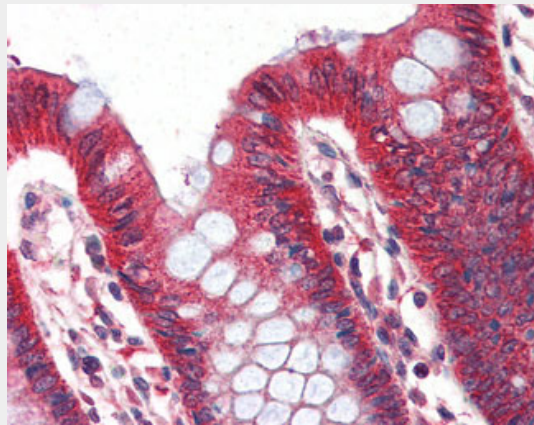
in visceral adipose tissue and mammary gland (PubMed:9521880)

### **PLIN1 / Perilipin Antibody (Internal) - Protocols**

Provided below are standard protocols that you may find useful for product applications.

- [Western Blot](#)
- [Blocking Peptides](#)
- [Dot Blot](#)
- [Immunohistochemistry](#)
- [Immunofluorescence](#)
- [Immunoprecipitation](#)
- [Flow Cytometry](#)
- [Cell Culture](#)

### **PLIN1 / Perilipin Antibody (Internal) - Images**



Anti-Perilipin antibody IHC of human colon.

### **PLIN1 / Perilipin Antibody (Internal) - Background**

Modulator of adipocyte lipid metabolism. Coats lipid storage droplets to protect them from breakdown by hormone-sensitive lipase (HSL). Its absence may result in leanness. Plays a role in unilocular lipid droplet formation by activating CIDEC. Their interaction promotes lipid droplet enlargement and directional net neutral lipid transfer. May modulate lipolysis and triglyceride levels.

### **PLIN1 / Perilipin Antibody (Internal) - References**

- Nishiu J., et al. *Genomics* 48:254-257(1998).  
Zody M.C., et al. *Nature* 440:671-675(2006).  
Gandotra S., et al. *N. Engl. J. Med.* 364:740-748(2011).  
Grahn T.H., et al. *Biochem. Biophys. Res. Commun.* 432:296-301(2013).