

**Ferritin Heavy Chain / FTH1 Antibody (C-Terminus)**  
**Goat Polyclonal Antibody**  
**Catalog # ALS12621****Specification**

---

**Ferritin Heavy Chain / FTH1 Antibody (C-Terminus) - Product Information**

Application	IHC
Primary Accession	<a href="#">P02794</a>
Reactivity	Human, Monkey
Host	Goat
Clonality	Polyclonal
Calculated MW	21kDa KDa

**Ferritin Heavy Chain / FTH1 Antibody (C-Terminus) - Additional Information****Gene ID** 2495**Other Names**

Ferritin heavy chain, Ferritin H subunit, 1.16.3.1, Cell proliferation-inducing gene 15 protein, Ferritin heavy chain, N-terminally processed, FTH1, FTH, FTHL6

**Target/Specificity**

Human FTH1.

**Reconstitution & Storage**

Store at -20°C. Minimize freezing and thawing.

**Precautions**

Ferritin Heavy Chain / FTH1 Antibody (C-Terminus) is for research use only and not for use in diagnostic or therapeutic procedures.

**Ferritin Heavy Chain / FTH1 Antibody (C-Terminus) - Protein Information****Name** FTH1**Synonyms** FTH, FTHL6**Function**

Stores iron in a soluble, non-toxic, readily available form. Important for iron homeostasis. Has ferroxidase activity (PubMed: <http://www.uniprot.org/citations/9003196> target="\_blank">9003196</a>). Iron is taken up in the ferrous form and deposited as ferric hydroxides after oxidation (PubMed: <http://www.uniprot.org/citations/9003196> target="\_blank">9003196</a>). Also plays a role in delivery of iron to cells (By similarity). Mediates iron uptake in capsule cells of the developing kidney (By similarity). Delivery to lysosomes is mediated by the cargo receptor NCOA4 for autophagic degradation and release of iron (PubMed: <http://www.uniprot.org/citations/24695223> target="\_blank">24695223</a>, PubMed: <http://www.uniprot.org/citations/26436293> target="\_blank">26436293</a>).

**Cellular Location**

Cytoplasm. Lysosome. Cytoplasmic vesicle, autophagosome

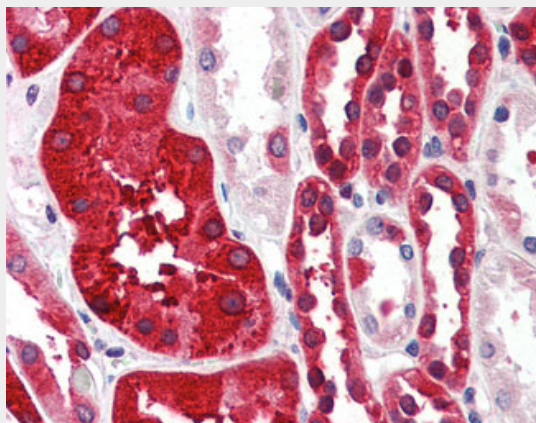
**Tissue Location**

Expressed in the liver.

**Ferritin Heavy Chain / FTH1 Antibody (C-Terminus) - Protocols**

Provided below are standard protocols that you may find useful for product applications.

- [Western Blot](#)
- [Blocking Peptides](#)
- [Dot Blot](#)
- [Immunohistochemistry](#)
- [Immunofluorescence](#)
- [Immunoprecipitation](#)
- [Flow Cytometry](#)
- [Cell Culture](#)

**Ferritin Heavy Chain / FTH1 Antibody (C-Terminus) - Images**

Anti-FTH1 antibody IHC of human kidney.

**Ferritin Heavy Chain / FTH1 Antibody (C-Terminus) - Background**

Stores iron in a soluble, non-toxic, readily available form. Important for iron homeostasis. Has ferroxidase activity. Iron is taken up in the ferrous form and deposited as ferric hydroxides after oxidation. Also plays a role in delivery of iron to cells. Mediates iron uptake in capsule cells of the developing kidney (By similarity).

**Ferritin Heavy Chain / FTH1 Antibody (C-Terminus) - References**

- Costanzo F., et al. EMBO J. 3:23-27(1984).  
Boyd D., et al. J. Biol. Chem. 260:11755-11761(1985).  
Chou C.-C., et al. Mol. Cell. Biol. 6:566-573(1986).  
Costanzo F., et al. Nucleic Acids Res. 14:721-736(1986).  
Hentze M.W., et al. Proc. Natl. Acad. Sci. U.S.A. 83:7226-7230(1986).