

GHRL / Ghrelin Antibody (C-Terminus)
Goat Polyclonal Antibody
Catalog # ALS12609**Specification**

GHRL / Ghrelin Antibody (C-Terminus) - Product Information

Application	IHC
Primary Accession	O9UBU3
Reactivity	Human, Monkey
Host	Goat
Clonality	Polyclonal
Calculated MW	13kDa KDa

GHRL / Ghrelin Antibody (C-Terminus) - Additional Information**Gene ID** 51738**Other Names**

Appetite-regulating hormone, Growth hormone secretagogue, Growth hormone-releasing peptide, Motilin-related peptide, Protein M46, Ghrelin-27, Ghrelin-28, Ghrelin, Obestatin, GHRL, MTLRP

Target/Specificity

Human GHRL / Ghrelin. This antibody is expected to recognise all reported isoforms.

Reconstitution & Storage

Store at -20°C. Minimize freezing and thawing.

Precautions

GHRL / Ghrelin Antibody (C-Terminus) is for research use only and not for use in diagnostic or therapeutic procedures.

GHRL / Ghrelin Antibody (C-Terminus) - Protein Information**Name** GHRL**Synonyms** MTLRP**Function**

[Ghrelin-27]: Ghrelin is the ligand for growth hormone secretagogue receptor type 1 (GHSR) (PubMed:10604470). Induces the release of growth hormone from the pituitary (PubMed:10604470). Has an appetite-stimulating effect, induces adiposity and stimulates gastric acid secretion. Involved in growth regulation.

Cellular Location

Secreted.

Tissue Location

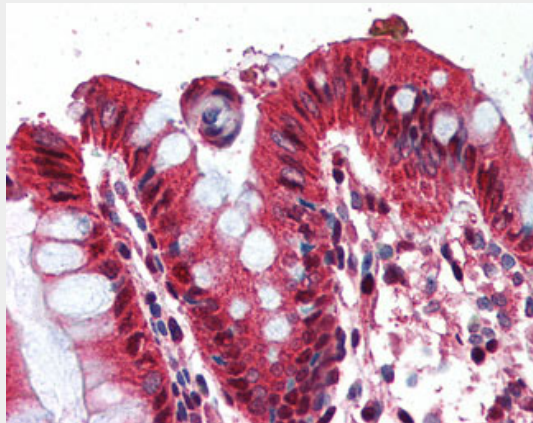
Highest level in stomach. All forms are found in serum as well. Other tissues compensate for the loss of ghrelin synthesis in the stomach following gastrectomy

GHRL / Ghrelin Antibody (C-Terminus) - Protocols

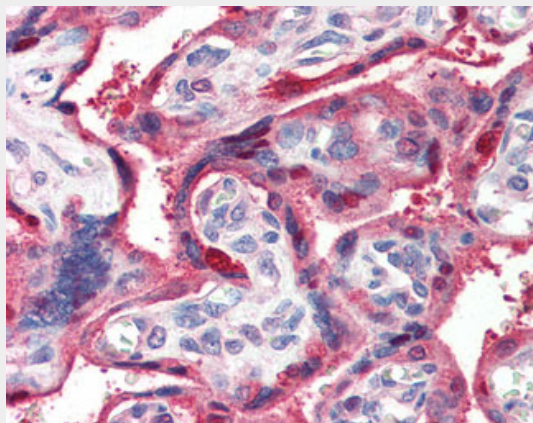
Provided below are standard protocols that you may find useful for product applications.

- [Western Blot](#)
- [Blocking Peptides](#)
- [Dot Blot](#)
- [Immunohistochemistry](#)
- [Immunofluorescence](#)
- [Immunoprecipitation](#)
- [Flow Cytometry](#)
- [Cell Culture](#)

GHRL / Ghrelin Antibody (C-Terminus) - Images



Anti-Ghrelin antibody IHC of human colon.



Anti-Ghrelin antibody IHC of human placenta.

GHRL / Ghrelin Antibody (C-Terminus) - Background

Ghrelin is the ligand for growth hormone secretagogue receptor type 1 (GHSR). Induces the release of growth hormone from the pituitary. Has an appetite-stimulating effect, induces adiposity

and stimulates gastric acid secretion. Involved in growth regulation.

GHRL / Ghrelin Antibody (C-Terminus) - References

- Kojima M., et al. Nature 402:656-660(1999).
Tomasetto C., et al. Gastroenterology 119:395-405(2000).
Wajnrajch M.P., et al. J. Endocr. Genet. 1:231-233(2000).
Hosoda H., et al. J. Biol. Chem. 278:64-70(2003).
Seim I., et al. BMC Genomics 8:298-298(2007).