

NR1H2 / LXR Beta Antibody (N-Terminus)
Goat Polyclonal Antibody
Catalog # ALS12601**Specification**

NR1H2 / LXR Beta Antibody (N-Terminus) - Product Information

Application	WB, IHC
Primary Accession	P55055
Reactivity	Human
Host	Goat
Clonality	Polyclonal
Calculated MW	51kDa KDa

NR1H2 / LXR Beta Antibody (N-Terminus) - Additional Information**Gene ID** 7376**Other Names**

Oxysterols receptor LXR-beta, Liver X receptor beta, Nuclear receptor NER, Nuclear receptor subfamily 1 group H member 2, Ubiquitously-expressed nuclear receptor, NR1H2, LXRB, NER, UNR

Target/Specificity

Human NR1H2. Based on the peptide used, this antibody is expected to be specific for LXR beta and not to cross-react with LXR alpha.

Reconstitution & Storage

Store at -20°C. Minimize freezing and thawing.

Precautions

NR1H2 / LXR Beta Antibody (N-Terminus) is for research use only and not for use in diagnostic or therapeutic procedures.

NR1H2 / LXR Beta Antibody (N-Terminus) - Protein Information**Name** NR1H2**Synonyms** LXRB, NER, UNR**Function**

Nuclear receptor that exhibits a ligand-dependent transcriptional activation activity (PubMed:25661920). Binds preferentially to double-stranded oligonucleotide direct repeats having the consensus half-site sequence 5'-AGGTCA-3' and 4-nt spacing (DR-4). Regulates cholesterol uptake through MYLIP-dependent ubiquitination of LDLR, VLDLR and LRP8; DLDLR and LRP8. Interplays functionally with RORA for the regulation of genes involved in liver metabolism (By similarity). Induces LPCAT3-dependent phospholipid remodeling in endoplasmic reticulum (ER) membranes of hepatocytes, driving SREBF1 processing and lipogenesis (By similarity). Via LPCAT3, triggers the incorporation of arachidonate into phosphatidylcholines of ER membranes, increasing membrane

dynamics and enabling triacylglycerols transfer to nascent very low-density lipoprotein (VLDL) particles (By similarity). Via LPCAT3 also counteracts lipid-induced ER stress response and inflammation, likely by modulating SRC kinase membrane compartmentalization and limiting the synthesis of lipid inflammatory mediators (By similarity). Plays an anti-inflammatory role during the hepatic acute phase response by acting as a corepressor: inhibits the hepatic acute phase response by preventing dissociation of the N-Cor corepressor complex (PubMed:20159957).

Cellular Location

Nucleus {ECO:0000255|PROSITE-ProRule:PRU00407}.

Tissue Location

Ubiquitous.

NR1H2 / LXR Beta Antibody (N-Terminus) - Protocols

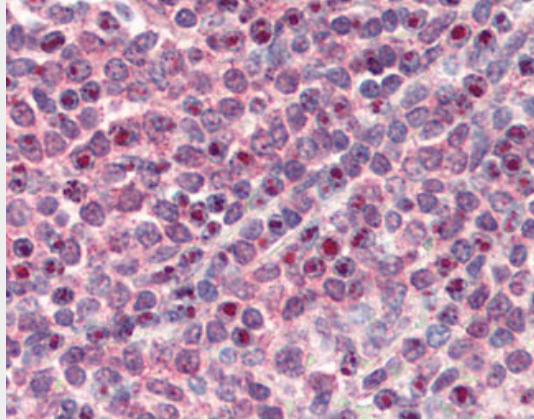
Provided below are standard protocols that you may find useful for product applications.

- [Western Blot](#)
- [Blocking Peptides](#)
- [Dot Blot](#)
- [Immunohistochemistry](#)
- [Immunofluorescence](#)
- [Immunoprecipitation](#)
- [Flow Cytometry](#)
- [Cell Culture](#)

NR1H2 / LXR Beta Antibody (N-Terminus) - Images



Antibody (1 ug/ml) staining of human bone marrow lysate (35 ug protein in RIPA buffer).



Anti-NR1H2 antibody IHC of human spleen.

NR1H2 / LXR Beta Antibody (N-Terminus) - Background

Nuclear receptor. Binds preferentially to double-stranded oligonucleotide direct repeats having the consensus half-site sequence 5'-AGGTCA-3' and 4-nt spacing (DR-4). Regulates cholesterol uptake through MYLIP-dependent ubiquitination of LDLR, VLDLR and LRP8; DLDLR and LRP8. Interplays functionally with RORA for the regulation of genes involved in liver metabolism (By similarity).

NR1H2 / LXR Beta Antibody (N-Terminus) - References

- Shinar D.M., et al. *Gene* 147:273-276(1994).
- Ota T., et al. *Nat. Genet.* 36:40-45(2004).
- Grimwood J., et al. *Nature* 428:529-535(2004).
- Song C., et al. Submitted (SEP-1994) to the EMBL/GenBank/DDBJ databases.
- Farnegardh M., et al. *J. Biol. Chem.* 278:38821-38828(2003).