

REXO1 / REX1 Antibody (aa1060-1221, clone 4H5)
Mouse Monoclonal Antibody
Catalog # ALS12558

Specification

REXO1 / REX1 Antibody (aa1060-1221, clone 4H5) - Product Information

Application	IHC, WB
Primary Accession	Q8N1G1
Reactivity	Human
Host	Mouse
Clonality	Monoclonal
Calculated MW	132kDa KDa

REXO1 / REX1 Antibody (aa1060-1221, clone 4H5) - Additional Information

Gene ID 57455

Other Names

RNA exonuclease 1 homolog, 3.1.-., Elongin-A-binding protein 1, EloA-BP1, Transcription elongation factor B polypeptide 3-binding protein 1, REXO1, ELOABP1, KIAA1138, TCEB3BP1

Reconstitution & Storage

Long term: -20°C; Short term: +4°C; Avoid freeze-thaw cycles.

Precautions

REXO1 / REX1 Antibody (aa1060-1221, clone 4H5) is for research use only and not for use in diagnostic or therapeutic procedures.

REXO1 / REX1 Antibody (aa1060-1221, clone 4H5) - Protein Information

Name REXO1

Synonyms ELOABP1, KIAA1138, TCEB3BP1

Function

Seems to have no detectable effect on transcription elongation in vitro.

Cellular Location

Nucleus.

Tissue Location

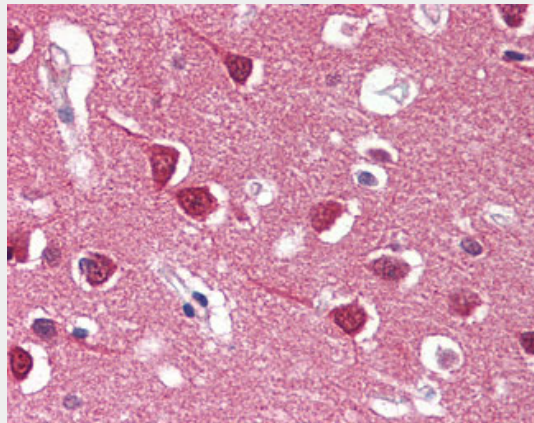
Ubiquitously expressed.

REXO1 / REX1 Antibody (aa1060-1221, clone 4H5) - Protocols

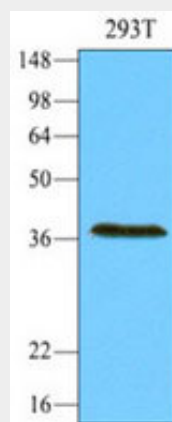
Provided below are standard protocols that you may find useful for product applications.

- [Western Blot](#)
- [Blocking Peptides](#)
- [Dot Blot](#)
- [Immunohistochemistry](#)
- [Immunofluorescence](#)
- [Immunoprecipitation](#)
- [Flow Cytometry](#)
- [Cell Culture](#)

REXO1 / REX1 Antibody (aa1060-1221, clone 4H5) - Images



Anti-REXO1 antibody IHC of human brain, cortex.



Cell lysates of 293T (30 ug) were resolved by SDS-PAGE, transferred to NC membrane and probed...

REXO1 / REX1 Antibody (aa1060-1221, clone 4H5) - Background

Seems to have no detectable effect on transcription elongation in vitro.

REXO1 / REX1 Antibody (aa1060-1221, clone 4H5) - References

- Tamura K., et al. *Biochem. Biophys. Res. Commun.* 309:189-195(2003).
Hirosawa M., et al. *DNA Res.* 6:329-336(1999).
Grimwood J., et al. *Nature* 428:529-535(2004).
Cantin G.T., et al. *J. Proteome Res.* 7:1346-1351(2008).
Rigbolt K.T., et al. *Sci. Signal.* 4:RS3-RS3(2011).