

CTSD / Cathepsin D Antibody (clone 4G2)
Mouse Monoclonal Antibody
Catalog # ALS12547**Specification**

CTSD / Cathepsin D Antibody (clone 4G2) - Product Information

Application	IHC, WB
Primary Accession	P07339
Reactivity	Human
Host	Mouse
Clonality	Monoclonal
Calculated MW	45kDa KDa

CTSD / Cathepsin D Antibody (clone 4G2) - Additional Information**Gene ID** 1509**Other Names**

Cathepsin D, 3.4.23.5, Cathepsin D light chain, Cathepsin D heavy chain, CTSD, CPSD

Reconstitution & Storage

Long term: -20°C; Short term: +4°C; Avoid freeze-thaw cycles.

Precautions

CTSD / Cathepsin D Antibody (clone 4G2) is for research use only and not for use in diagnostic or therapeutic procedures.

CTSD / Cathepsin D Antibody (clone 4G2) - Protein Information**Name** CTSD**Synonyms** CPSD**Function**

Acid protease active in intracellular protein breakdown. Plays a role in APP processing following cleavage and activation by ADAM30 which leads to APP degradation (PubMed:27333034). Involved in the pathogenesis of several diseases such as breast cancer and possibly Alzheimer disease.

Cellular Location

Lysosome. Melanosome. Secreted, extracellular space. Note=Identified by mass spectrometry in melanosome fractions from stage I to stage IV. In aortic samples, detected as an extracellular protein loosely bound to the matrix (PubMed:20551380)

Tissue Location

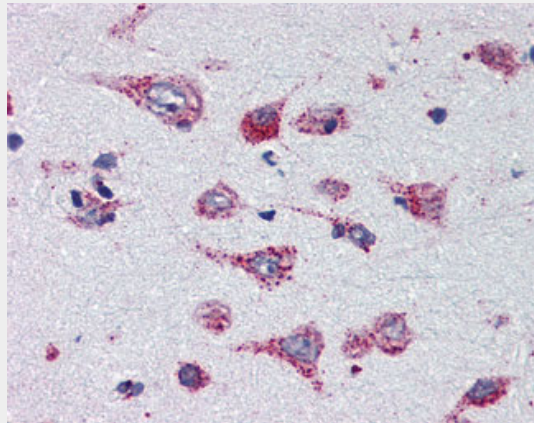
Expressed in the aorta extracellular space (at protein level) (PubMed:20551380). Expressed in liver (at protein level) (PubMed:1426530).

CTSD / Cathepsin D Antibody (clone 4G2) - Protocols

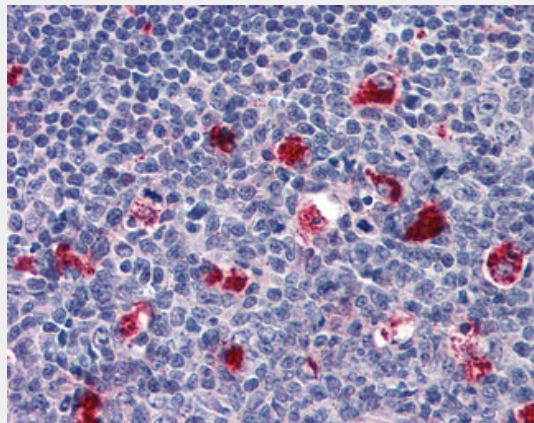
Provided below are standard protocols that you may find useful for product applications.

- [Western Blot](#)
- [Blocking Peptides](#)
- [Dot Blot](#)
- [Immunohistochemistry](#)
- [Immunofluorescence](#)
- [Immunoprecipitation](#)
- [Flow Cytometry](#)
- [Cell Culture](#)

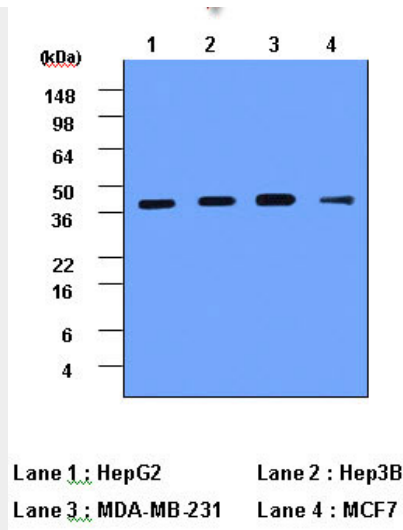
CTSD / Cathepsin D Antibody (clone 4G2) - Images



Anti-Cathepsin D antibody IHC of human brain, cortex.



Anti-Cathepsin D antibody IHC of human tonsil.



Cell lysates of HepG2, Hep3B, MDA-MB-231 and MCF7 (each 20 ug) were resolved by SDS-PAGE,...

CTSD / Cathepsin D Antibody (clone 4G2) - Background

Acid protease active in intracellular protein breakdown. Involved in the pathogenesis of several diseases such as breast cancer and possibly Alzheimer disease.

CTSD / Cathepsin D Antibody (clone 4G2) - References

Faust P.L.,et al.Proc. Natl. Acad. Sci. U.S.A. 82:4910-4914(1985).
Westley B.R.,et al.Nucleic Acids Res. 15:3773-3786(1987).
Redecker B.,et al.DNA Cell Biol. 10:423-431(1991).
Ebert L.,et al.Submitted (JUN-2004) to the EMBL/GenBank/DDBJ databases.
Kalnine N.,et al.Submitted (OCT-2004) to the EMBL/GenBank/DDBJ databases.