

HSP90B1 / GP96 / GRP94 Antibody (aa676-803, clone 2H3)
Mouse Monoclonal Antibody
Catalog # ALS12545**Specification**

HSP90B1 / GP96 / GRP94 Antibody (aa676-803, clone 2H3) - Product Information

Application	IHC, IF
Primary Accession	P14625
Reactivity	Human
Host	Mouse
Clonality	Monoclonal
Calculated MW	92kDa KDa

HSP90B1 / GP96 / GRP94 Antibody (aa676-803, clone 2H3) - Additional Information**Gene ID** 7184**Other Names**

Endoplasmic reticulum chaperone protein, GRP-94, Heat shock protein 90 kDa beta member 1, Tumor rejection antigen 1, gp96 homolog, HSP90B1, GRP94, TRA1

Reconstitution & Storage

Long term: -20°C; Short term: +4°C; Avoid freeze-thaw cycles.

Precautions

HSP90B1 / GP96 / GRP94 Antibody (aa676-803, clone 2H3) is for research use only and not for use in diagnostic or therapeutic procedures.

HSP90B1 / GP96 / GRP94 Antibody (aa676-803, clone 2H3) - Protein Information**Name** HSP90B1 ([HGNC:12028](#))**Function**

Molecular chaperone that functions in the processing and transport of secreted proteins (By similarity). When associated with CNPY3, required for proper folding of Toll-like receptors (By similarity). Functions in endoplasmic reticulum associated degradation (ERAD) (PubMed:18264092). Has ATPase activity (By similarity). May participate in the unfolding of cytosolic leaderless cargos (lacking the secretion signal sequence) such as the interleukin 1/IL-1 to facilitate their translocation into the ERGIC (endoplasmic reticulum- Golgi intermediate compartment) and secretion; the translocation process is mediated by the cargo receptor TMED10 (PubMed:32272059).

Cellular Location

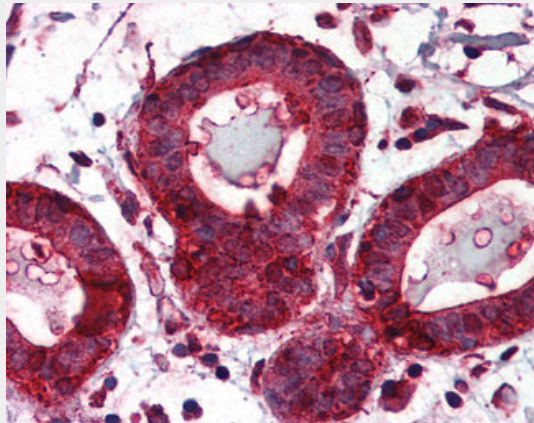
Endoplasmic reticulum lumen. Sarcoplasmic reticulum lumen {ECO:0000250|UniProtKB:P41148}. Melanosome Note=Identified by mass spectrometry in melanosome fractions from stage I to stage IV.

HSP90B1 / GP96 / GRP94 Antibody (aa676-803, clone 2H3) - Protocols

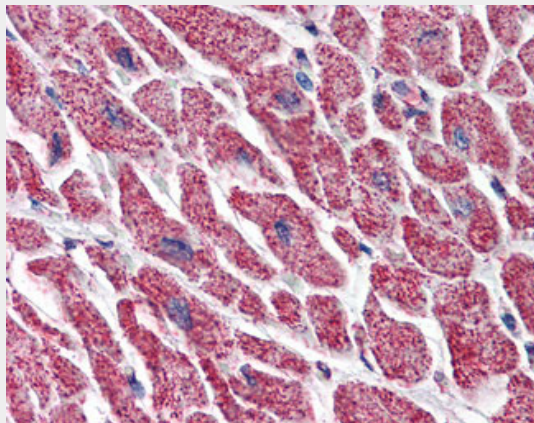
Provided below are standard protocols that you may find useful for product applications.

- [Western Blot](#)
- [Blocking Peptides](#)
- [Dot Blot](#)
- [Immunohistochemistry](#)
- [Immunofluorescence](#)
- [Immunoprecipitation](#)
- [Flow Cytometry](#)
- [Cell Culture](#)

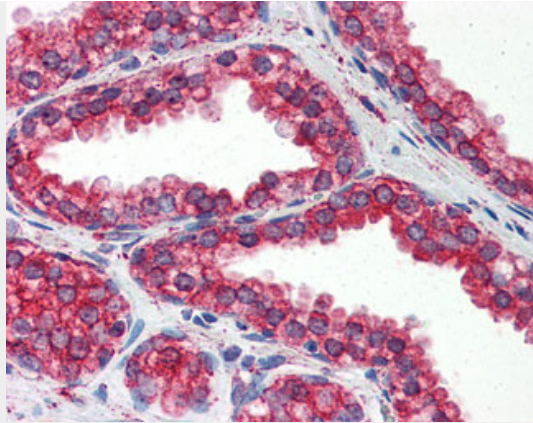
HSP90B1 / GP96 / GRP94 Antibody (aa676-803, clone 2H3) - Images



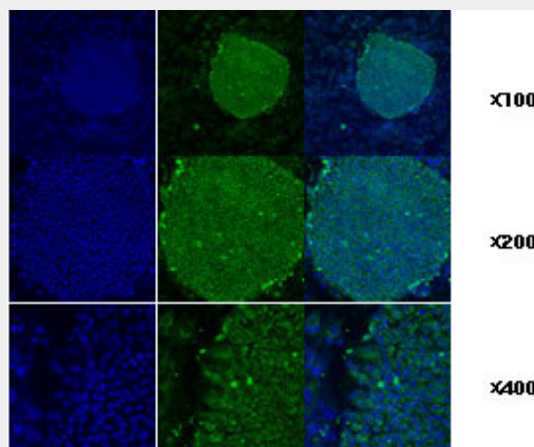
Anti-HSP90B1 / GRP94 antibody IHC of human breast.



Anti-HSP90B1 / GRP94 antibody IHC of human heart.



Anti-HSP90B1 / GRP94 antibody IHC of human prostate.



Immunofluorescence staining of human ES cell colony with monoclonal anti-human TRA1 antibody (2H3).

HSP90B1 / GP96 / GRP94 Antibody (aa676-803, clone 2H3) - Background

Molecular chaperone that functions in the processing and transport of secreted proteins. When associated with CNPY3, required for proper folding of Toll-like receptors (By similarity). Functions in endoplasmic reticulum associated degradation (ERAD). Has ATPase activity.

HSP90B1 / GP96 / GRP94 Antibody (aa676-803, clone 2H3) - References

- Maki R.G.,et al.Proc. Natl. Acad. Sci. U.S.A. 87:5658-5662(1990).
- Chang S.C.,et al.Mol. Cell. Biol. 9:2153-2162(1989).
- Meng S.,et al.Submitted (JUN-2001) to the EMBL/GenBank/DDBJ databases.
- Gevaert K.,et al.Nat. Biotechnol. 21:566-569(2003).
- Meunier L.,et al.Mol. Biol. Cell 13:4456-4469(2002).