

**CD20 Antibody (clone MEM-269)**  
**Mouse Monoclonal Antibody**  
**Catalog # ALS12483****Specification**

---

**CD20 Antibody (clone MEM-269) - Product Information**

Application	IHC
Primary Accession	<a href="#">P11836</a>
Reactivity	Human
Host	Mouse
Clonality	Monoclonal
Calculated MW	33kDa KDa

**CD20 Antibody (clone MEM-269) - Additional Information****Gene ID** 931**Other Names**

B-lymphocyte antigen CD20, B-lymphocyte surface antigen B1, Bp35, Leukocyte surface antigen Leu-16, Membrane-spanning 4-domains subfamily A member 1, CD20, MS4A1, CD20

**Target/Specificity**

Reacts with CD20 (Bp35), a 33-37 kD non-glycosylated membrane receptor with four transmembrane domains, expressed on B lymphocytes (it is lost on plasma cells), follicular dendritic cells, and at low levels on peripheral blood T lymphocytes.

**Reconstitution & Storage**

+4°C or -20°C, Avoid repeated freezing and thawing.

**Precautions**

CD20 Antibody (clone MEM-269) is for research use only and not for use in diagnostic or therapeutic procedures.

**CD20 Antibody (clone MEM-269) - Protein Information****Name** MS4A1**Synonyms** CD20**Function**

B-lymphocyte-specific membrane protein that plays a role in the regulation of cellular calcium influx necessary for the development, differentiation, and activation of B-lymphocytes (PubMed: [12920111](http://www.uniprot.org/citations/12920111), PubMed: [3925015](http://www.uniprot.org/citations/3925015), PubMed: [7684739](http://www.uniprot.org/citations/7684739)). Functions as a store-operated calcium (SOC) channel component promoting calcium influx after activation by the B-cell receptor/BCR (PubMed: [12920111](http://www.uniprot.org/citations/12920111), PubMed: [18474602](http://www.uniprot.org/citations/18474602)

target="\_blank">18474602</a>, PubMed:<a href="http://www.uniprot.org/citations/7684739" target="\_blank">7684739</a>).

#### **Cellular Location**

Cell membrane; Multi-pass membrane protein. Cell membrane; Lipid-anchor. Note=Constitutively associated with membrane rafts.

#### **Tissue Location**

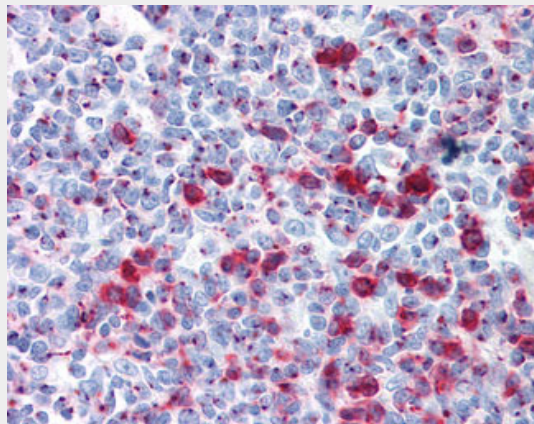
Expressed on B-cells.

### **CD20 Antibody (clone MEM-269) - Protocols**

Provided below are standard protocols that you may find useful for product applications.

- [Western Blot](#)
- [Blocking Peptides](#)
- [Dot Blot](#)
- [Immunohistochemistry](#)
- [Immunofluorescence](#)
- [Immunoprecipitation](#)
- [Flow Cytometry](#)
- [Cell Culture](#)

### **CD20 Antibody (clone MEM-269) - Images**



Anti-MS4A1 / CD20 antibody IHC of human tonsil.

### **CD20 Antibody (clone MEM-269) - Background**

This protein may be involved in the regulation of B-cell activation and proliferation.

### **CD20 Antibody (clone MEM-269) - References**

Stamenkovic I., et al. J. Exp. Med. 167:1975-1980(1988).  
Tedder T.F., et al. Proc. Natl. Acad. Sci. U.S.A. 85:208-212(1988).  
Einfeld D.A., et al. EMBO J. 7:711-717(1988).  
Tedder T.F., et al. J. Immunol. 142:2560-2568(1989).  
Ota T., et al. Nat. Genet. 36:40-45(2004).