

FOLH1 / PSMA Antibody
Rabbit Polyclonal Antibody
Catalog # ALS12471**Specification**

FOLH1 / PSMA Antibody - Product Information

Application	IHC
Primary Accession	Q04609
Reactivity	Human
Host	Rabbit
Clonality	Polyclonal
Calculated MW	84kDa KDa

FOLH1 / PSMA Antibody - Additional Information**Gene ID** 2346**Other Names**

Glutamate carboxypeptidase 2, 3.4.17.21, Cell growth-inhibiting gene 27 protein, Folate hydrolase 1, Folylpoly-gamma-glutamate carboxypeptidase, FGCP, Glutamate carboxypeptidase II, GCPII, Membrane glutamate carboxypeptidase, mGCP, N-acetylated-alpha-linked acidic dipeptidase I, NAALADase I, Prostate-specific membrane antigen, PSM, PSMA, Pteroylpoly-gamma-glutamate carboxypeptidase, FOLH1, FOLH, NAALAD1, PSM, PSMA

Reconstitution & Storage

+4°C or -20°C, Avoid repeated freezing and thawing.

Precautions

FOLH1 / PSMA Antibody is for research use only and not for use in diagnostic or therapeutic procedures.

FOLH1 / PSMA Antibody - Protein Information**Name** FOLH1 ([HGNC:3788](#))**Synonyms** FOLH, NAALAD1, PSM, PSMA**Function**

Has both folate hydrolase and N-acetylated-alpha-linked- acidic dipeptidase (NAALADase) activity. Has a preference for tri- alpha-glutamate peptides. In the intestine, required for the uptake of folate. In the brain, modulates excitatory neurotransmission through the hydrolysis of the neuropeptide, N-aceylaspartylglutamate (NAAG), thereby releasing glutamate. Involved in prostate tumor progression.

Cellular Location

Cell membrane; Single-pass type II membrane protein

Tissue Location

Highly expressed in prostate epithelium. Detected in urinary bladder, kidney, testis, ovary, fallopian tube, breast, adrenal gland, liver, esophagus, stomach, small intestine, colon and brain (at protein level). Detected in the small intestine, brain, kidney, liver, spleen, colon, trachea, spinal cord and the capillary endothelium of a variety of tumors. Expressed specifically in jejunum brush border membranes. In the brain, highly expressed in the ventral striatum and brain stem. Also expressed in fetal liver and kidney Isoform PSMA' is the most abundant form in normal prostate. Isoform PSMA-1 is the most abundant form in primary prostate tumors. Isoform PSMA-9 is specifically expressed in prostate cancer

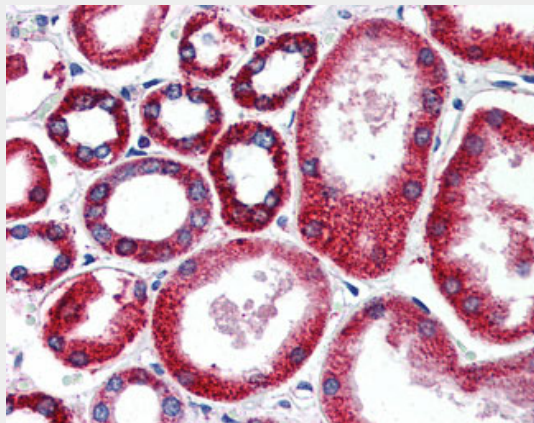
Volume
50 μ l

FOLH1 / PSMA Antibody - Protocols

Provided below are standard protocols that you may find useful for product applications.

- [Western Blot](#)
- [Blocking Peptides](#)
- [Dot Blot](#)
- [Immunohistochemistry](#)
- [Immunofluorescence](#)
- [Immunoprecipitation](#)
- [Flow Cytometry](#)
- [Cell Culture](#)

FOLH1 / PSMA Antibody - Images



Anti-FOLH1 / PSMA antibody IHC of human kidney.

FOLH1 / PSMA Antibody - Background

Has both folate hydrolase and N-acetylated-alpha-linked- acidic dipeptidase (NAALADase) activity. Has a preference for tri- alpha-glutamate peptides. In the intestine, required for the uptake of folate. In the brain, modulates excitatory neurotransmission through the hydrolysis of the neuropeptide, N- acetylglutamate (NAAG), thereby releasing glutamate. Isoform PSM-4 and isoform PSM-5 would appear to be physiologically irrelevant. Involved in prostate tumor progression.

FOLH1 / PSMA Antibody - References

Israeli R.S., et al. Cancer Res. 53:227-230(1993).

Su S.L.,et al.Cancer Res. 55:1441-1443(1995).

O'Keefe D.S.,et al.Biochim. Biophys. Acta 1443:113-127(1998).

Luthi-Carter R.,et al.J. Pharmacol. Exp. Ther. 286:1020-1025(1998).

Pangalos M.N.,et al.J. Biol. Chem. 274:8470-8483(1999).