

Amisyn / STXBP6 Antibody (N-Terminus)
Goat Polyclonal Antibody
Catalog # ALS12446

Specification

Amisyn / STXBP6 Antibody (N-Terminus) - Product Information

Application	IHC
Primary Accession	Q8NFX7
Reactivity	Human, Mouse, Rabbit, Monkey, Pig, Horse, Bovine
Host	Goat
Clonality	Polyclonal
Calculated MW	24kDa KDa

Amisyn / STXBP6 Antibody (N-Terminus) - Additional Information

Gene ID 29091

Other Names

Syntaxin-binding protein 6, Amisyn, STXBP6

Target/Specificity

Human STXBP6.

Reconstitution & Storage

Store at -20°C. Minimize freezing and thawing.

Precautions

Amisyn / STXBP6 Antibody (N-Terminus) is for research use only and not for use in diagnostic or therapeutic procedures.

Amisyn / STXBP6 Antibody (N-Terminus) - Protein Information

Name STXBP6

Function

Forms non-fusogenic complexes with SNAP25 and STX1A and may thereby modulate the formation of functional SNARE complexes and exocytosis.

Cellular Location

Cytoplasm. Membrane; Peripheral membrane protein

Tissue Location

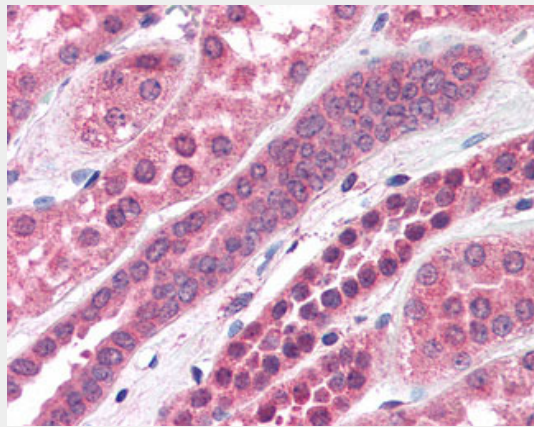
Detected at low levels in brain, and at very low levels in heart, adrenal gland, testis, liver and kidney

Amisyn / STXBP6 Antibody (N-Terminus) - Protocols

Provided below are standard protocols that you may find useful for product applications.

- [Western Blot](#)
- [Blocking Peptides](#)
- [Dot Blot](#)
- [Immunohistochemistry](#)
- [Immunofluorescence](#)
- [Immunoprecipitation](#)
- [Flow Cytometry](#)
- [Cell Culture](#)

Amisyn / STXBP6 Antibody (N-Terminus) - Images



Anti-STXBP6 antibody IHC of human kidney.

Amisyn / STXBP6 Antibody (N-Terminus) - Background

Forms non-fusogenic complexes with SNAP25 and STX1A and may thereby modulate the formation of functional SNARE complexes and exocytosis.

Amisyn / STXBP6 Antibody (N-Terminus) - References

- Scales S.J., et al. *J. Biol. Chem.* 277:28271-28279(2002).
Zhang Q.-H., et al. *Genome Res.* 10:1546-1560(2000).
Ota T., et al. *Nat. Genet.* 36:40-45(2004).
Bechtel S., et al. *BMC Genomics* 8:399-399(2007).
Heilig R., et al. *Nature* 421:601-607(2003).