

Kinesin 5A / KIF5A Antibody (Internal)
Rabbit Polyclonal Antibody
Catalog # ALS12414**Specification**

Kinesin 5A / KIF5A Antibody (Internal) - Product Information

Application	IF, IHC, ICC
Primary Accession	Q12840
Reactivity	Human, Mouse, Rat
Host	Rabbit
Clonality	Polyclonal
Calculated MW	117kDa KDa

Kinesin 5A / KIF5A Antibody (Internal) - Additional Information**Gene ID** 3798**Other Names**

Kinesin heavy chain isoform 5A, Kinesin heavy chain neuron-specific 1, Neuronal kinesin heavy chain, NKHC, KIF5A, NKHC1

Target/Specificity

a 20 amino acid peptide from near the center of human KIF5

Reconstitution & Storage

Short term 4°C, long term aliquot and store at -20°C, avoid freeze thaw cycles. Store undiluted.

Precautions

Kinesin 5A / KIF5A Antibody (Internal) is for research use only and not for use in diagnostic or therapeutic procedures.

Kinesin 5A / KIF5A Antibody (Internal) - Protein Information**Name** KIF5A**Synonyms** NKHC1**Function**

Microtubule-dependent motor required for slow axonal transport of neurofilament proteins (NFH, NFM and NFL). Can induce formation of neurite-like membrane protrusions in non-neuronal cells in a ZFYVE27-dependent manner. The ZFYVE27-KIF5A complex contributes to the vesicular transport of VAPA, VAPB, SURF4, RAB11A, RAB11B and RTN3 proteins in neurons. Required for anterograde axonal transportation of MAPK8IP3/JIP3 which is essential for MAPK8IP3/JIP3 function in axon elongation.

Cellular Location

Cytoplasm, perinuclear region {ECO:0000250|UniProtKB:Q6QLM7}. Cytoplasm, cytoskeleton {ECO:0000250|UniProtKB:Q6QLM7}. Perikaryon {ECO:0000250|UniProtKB:Q6QLM7}.

Note=Concentrated in the cell body of the neurons, particularly in the perinuclear region
{ECO:0000250|UniProtKB:Q6QLM7}

Tissue Location

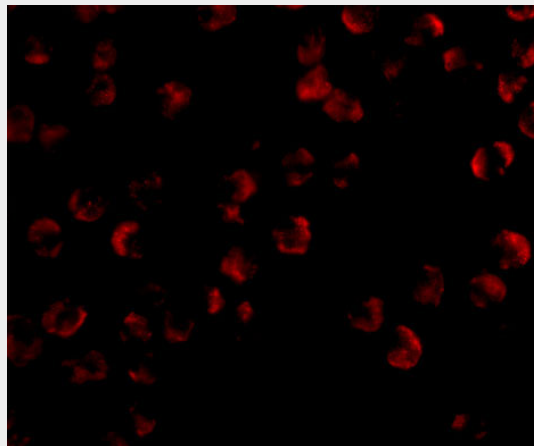
Distributed throughout the CNS but is highly enriched in subsets of neurons

Kinesin 5A / KIF5A Antibody (Internal) - Protocols

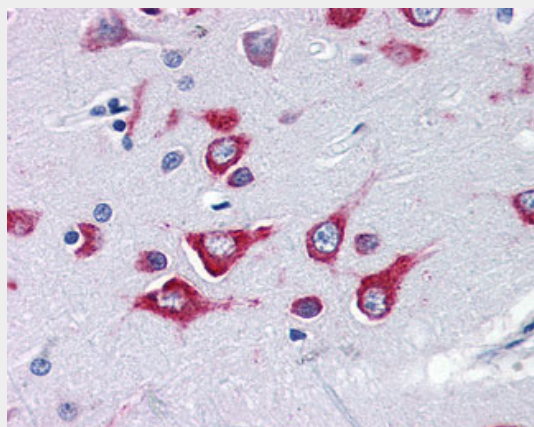
Provided below are standard protocols that you may find useful for product applications.

- [Western Blot](#)
- [Blocking Peptides](#)
- [Dot Blot](#)
- [Immunohistochemistry](#)
- [Immunofluorescence](#)
- [Immunoprecipitation](#)
- [Flow Cytometry](#)
- [Cell Culture](#)

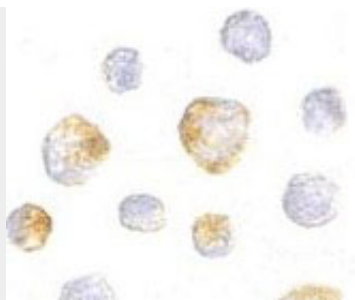
Kinesin 5A / KIF5A Antibody (Internal) - Images



Immunofluorescence of KIF5 in K562 cells with KIF5 antibody at 20 ug/ml.



Anti-KIF5A antibody IHC of human brain, cortex.



Immunocytochemistry of KIF5 in K562 cells with KIF5 antibody at 5 μ g/ml.

Kinesin 5A / KIF5A Antibody (Internal) - Background

Microtubule-dependent motor required for slow axonal transport of neurofilament proteins (NFH, NFM and NFL).

Kinesin 5A / KIF5A Antibody (Internal) - References

- Niclas J., et al. *Neuron* 12:1059-1072(1994).
- Nakajima D., et al. Submitted (MAR-2005) to the EMBL/GenBank/DDBJ databases.
- Mural R.J., et al. Submitted (JUL-2005) to the EMBL/GenBank/DDBJ databases.
- Gauci S., et al. *Anal. Chem.* 81:4493-4501(2009).
- Burkard T.R., et al. *BMC Syst. Biol.* 5:17-17(2011).