

TRIM25 Antibody (C-Terminus)
Rabbit Polyclonal Antibody
Catalog # ALS12401**Specification**

TRIM25 Antibody (C-Terminus) - Product Information

Application	IF, IHC, ICC
Primary Accession	Q14258
Reactivity	Human, Mouse
Host	Rabbit
Clonality	Polyclonal
Calculated MW	71kDa KDa

TRIM25 Antibody (C-Terminus) - Additional Information**Gene ID** 7706**Other Names**

E3 ubiquitin/ISG15 ligase TRIM25, 6.3.2.19, 6.3.2.n3, Estrogen-responsive finger protein, RING finger protein 147, Tripartite motif-containing protein 25, Ubiquitin/ISG15-conjugating enzyme TRIM25, Zinc finger protein 147, TRIM25, EFP, RNF147, ZNF147

Target/Specificity

a 19 amino acid peptide from near the carboxy terminus of human TRIM25

Reconstitution & Storage

Short term 4°C, long term aliquot and store at -20°C, avoid freeze thaw cycles. Store undiluted.

Precautions

TRIM25 Antibody (C-Terminus) is for research use only and not for use in diagnostic or therapeutic procedures.

TRIM25 Antibody (C-Terminus) - Protein Information**Name** TRIM25**Synonyms** EFP {ECO:0000303|PubMed:8248217}, RNF147**Function**

Functions as a ubiquitin E3 ligase and as an ISG15 E3 ligase (PubMed:16352599). Involved in innate immune defense against viruses by mediating ubiquitination of RIGI and IFIH1 (PubMed:17392790, PubMed:29357390, PubMed:30193849, PubMed:31710640, PubMed:33849980, PubMed:36045682). Mediates

'Lys-63'-linked polyubiquitination of the RIGI N-terminal CARD-like region and may play a role in signal transduction that leads to the production of interferons in response to viral infection (PubMed:17392790, PubMed:23950712). Mediates 'Lys-63'- linked polyubiquitination of IFIH1 (PubMed:30193849). Promotes ISGylation of 14-3-3 sigma (SFN), an adapter protein implicated in the regulation of a large spectrum signaling pathway (PubMed:16352599, PubMed:17069755). Mediates estrogen action in various target organs (PubMed:22452784). Mediates the ubiquitination and subsequent proteasomal degradation of ZFHX3 (PubMed:22452784). Plays a role in promoting the restart of stalled replication forks via interaction with the KHDC3L-OOEP scaffold and subsequent ubiquitination of BLM, resulting in the recruitment and retention of BLM at DNA replication forks (By similarity). Plays an essential role in the antiviral activity of ZAP/ZC3HAV1; an antiviral protein which inhibits the replication of certain viruses. Mechanistically, mediates 'Lys-63'-linked polyubiquitination of ZAP/ZC3HAV1 that is required for its optimal binding to target mRNA (PubMed:28060952, PubMed:28202764). Mediates also the ubiquitination of various substrates implicated in stress granule formation, nonsense-mediated mRNA decay, nucleoside synthesis and mRNA translation and stability (PubMed:36067236).

Cellular Location

Cytoplasm. Cytoplasm, Stress granule. Nucleus {ECO:0000250|UniProtKB:Q61510}

Tissue Location

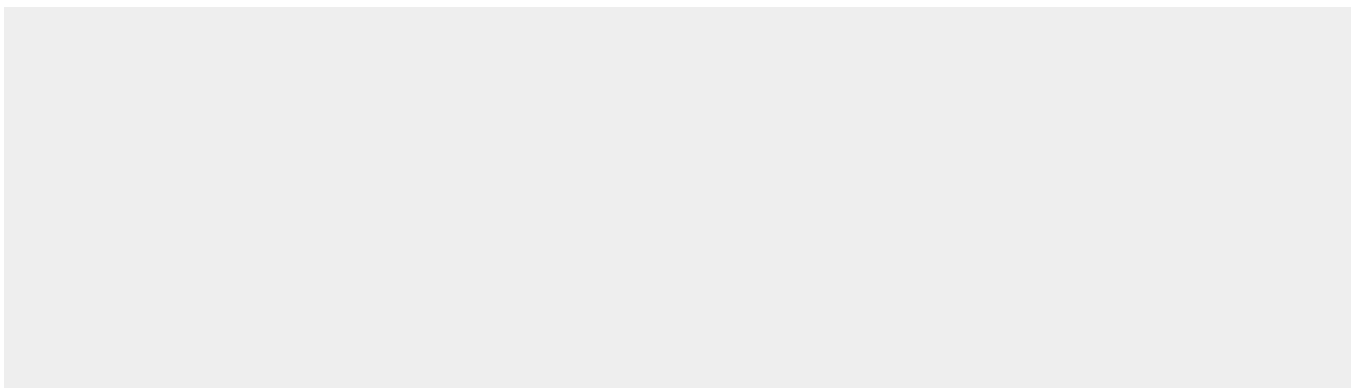
Expressed in breast tumors (at protein level). Ubiquitous.

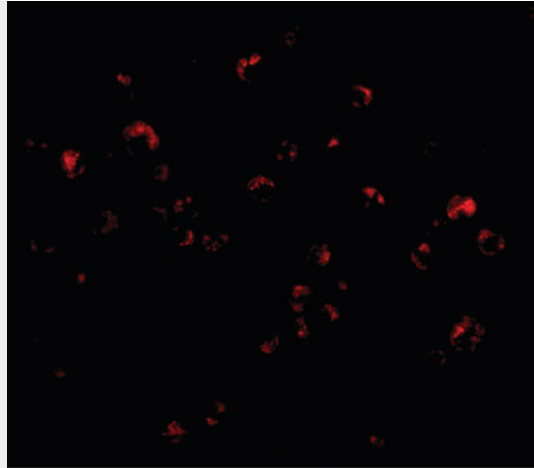
TRIM25 Antibody (C-Terminus) - Protocols

Provided below are standard protocols that you may find useful for product applications.

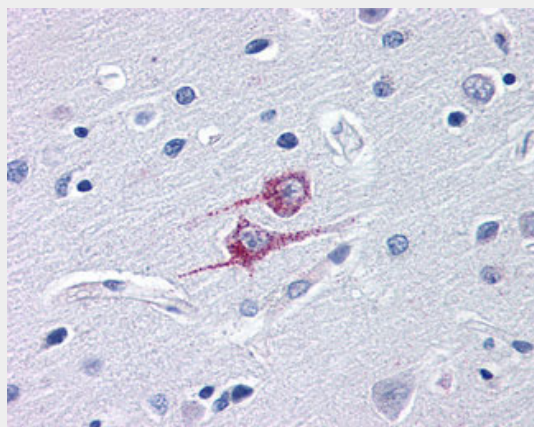
- [Western Blot](#)
- [Blocking Peptides](#)
- [Dot Blot](#)
- [Immunohistochemistry](#)
- [Immunofluorescence](#)
- [Immunoprecipitation](#)
- [Flow Cytometry](#)
- [Cell Culture](#)

TRIM25 Antibody (C-Terminus) - Images

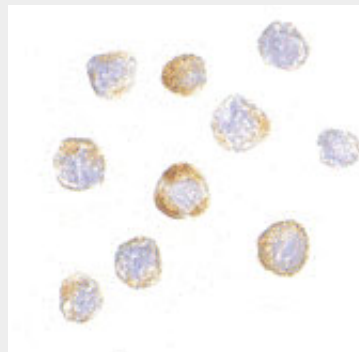




Immunofluorescence of TRIM25 in HeLa cells with TRIM25 antibody at 20 ug/ml.



Anti-TRIM25 antibody IHC of human brain, cortex.



Immunocytochemistry of TRIM25 in HeLa cells with TRIM25 antibody at 20 µg/ml.

TRIM25 Antibody (C-Terminus) - Background

Functions as a ubiquitin E3 ligase and as an ISG15 E3 ligase. Involved in innate immune defense against viruses by mediating ubiquitination of DDX58. Mediates 'Lys-63'-linked polyubiquitination of the DDX58 N-terminal CARD-like region which is crucial for triggering the cytosolic signal transduction that leads to the production of interferons in response to viral infection. Promotes ISGylation of 14-3-3 sigma (SFN), an adapter protein implicated in the regulation of a large spectrum signaling pathway. Mediates estrogen action in various target organs.

TRIM25 Antibody (C-Terminus) - References

Inoue S.,et al.Proc. Natl. Acad. Sci. U.S.A. 90:11117-11121(1993).
Zody M.C.,et al.Nature 440:1045-1049(2006).
Shimada N.,et al.Mol. Cell. Endocrinol. 218:147-153(2004).
Rush J.,et al.Nat. Biotechnol. 23:94-101(2005).
Nakasato N.,et al.Biochem. Biophys. Res. Commun. 351:540-546(2006).