

AIF1 / IBA1 Antibody (C-Terminus)
Goat Polyclonal Antibody
Catalog # ALS12364

Specification

AIF1 / IBA1 Antibody (C-Terminus) - Product Information

Application	IHC
Primary Accession	P55008
Reactivity	Human, Mouse, Rat, Hamster, Monkey, Pig
Host	Goat
Clonality	Polyclonal
Calculated MW	17kDa KDa

AIF1 / IBA1 Antibody (C-Terminus) - Additional Information

Gene ID 199

Other Names

Allograft inflammatory factor 1, AIF-1, Ionized calcium-binding adapter molecule 1, Protein G1, AIF1, G1, IBA1

Target/Specificity

Human AIF1 / IBA1. This antibody is expected to recognize isoform 1 (NP_116573.1) and isoform 3 (NP_001614.3).

Reconstitution & Storage

Store at -20°C. Minimize freezing and thawing.

Precautions

AIF1 / IBA1 Antibody (C-Terminus) is for research use only and not for use in diagnostic or therapeutic procedures.

AIF1 / IBA1 Antibody (C-Terminus) - Protein Information

Name AIF1

Synonyms G1, IBA1

Function

Actin-binding protein that enhances membrane ruffling and RAC activation. Enhances the actin-bundling activity of LCP1. Binds calcium. Plays a role in RAC signaling and in phagocytosis. May play a role in macrophage activation and function. Promotes the proliferation of vascular smooth muscle cells and of T-lymphocytes. Enhances lymphocyte migration. Plays a role in vascular inflammation.

Cellular Location

Cytoplasm, cytoskeleton {ECO:0000250|UniProtKB:O70200}. Cell projection, ruffle membrane {ECO:0000250|UniProtKB:O70200}; Peripheral membrane protein

{ECO:0000250|UniProtKB:O70200}; Cytoplasmic side {ECO:0000250|UniProtKB:O70200}. Cell projection, phagocytic cup {ECO:0000250|UniProtKB:O70200}. Note=Associated with the actin cytoskeleton at membrane ruffles and at sites of phagocytosis {ECO:0000250|UniProtKB:O70200}

Tissue Location

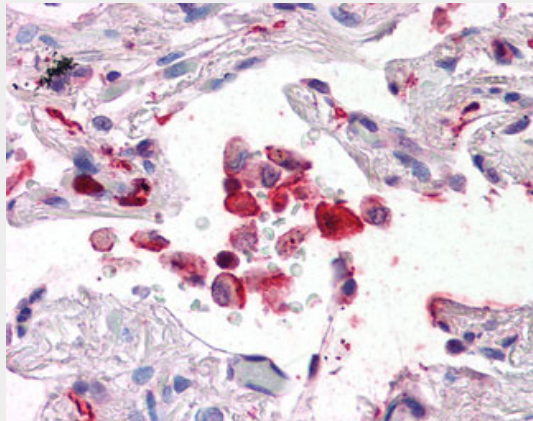
Detected in T-lymphocytes and peripheral blood mononuclear cells.

AIF1 / IBA1 Antibody (C-Terminus) - Protocols

Provided below are standard protocols that you may find useful for product applications.

- [Western Blot](#)
- [Blocking Peptides](#)
- [Dot Blot](#)
- [Immunohistochemistry](#)
- [Immunofluorescence](#)
- [Immunoprecipitation](#)
- [Flow Cytometry](#)
- [Cell Culture](#)

AIF1 / IBA1 Antibody (C-Terminus) - Images



Anti-AIF1 / IBA1 antibody IHC of human lung.

AIF1 / IBA1 Antibody (C-Terminus) - Background

Actin-binding protein that enhances membrane ruffling and RAC activation. Enhances the actin-bundling activity of LCP1. Binds calcium. Plays a role in RAC signaling and in phagocytosis. May play a role in macrophage activation and function. Promotes the proliferation of vascular smooth muscle cells and of T- lymphocytes. Enhances lymphocyte migration. Plays a role in vascular inflammation.

AIF1 / IBA1 Antibody (C-Terminus) - References

- Albertella M.R.,et al.Hum. Mol. Genet. 3:793-799(1994).
Holzinger I.,et al.Immunogenetics 42:315-322(1995).
Autieri M.V.,et al.Biochem. Biophys. Res. Commun. 228:29-37(1996).
Utans U.,et al.Transplantation 61:1387-1392(1996).
de Baey A.,et al.Genomics 45:591-600(1997).