

**ARIH1 Antibody (C-Terminus)**  
**Goat Polyclonal Antibody**  
**Catalog # ALS12351**

**Specification**

---

**ARIH1 Antibody (C-Terminus) - Product Information**

Application	IHC
Primary Accession	<a href="#">O9Y4X5</a>
Reactivity	Human, Mouse, Rat, Rabbit, Zebrafish, Monkey, Pig, Chicken, Horse, Xenopus, Bovine, Dog
Host	Goat
Clonality	Polyclonal
Calculated MW	64kDa KDa

**ARIH1 Antibody (C-Terminus) - Additional Information**

**Gene ID** 25820

**Other Names**

E3 ubiquitin-protein ligase ARIH1, 6.3.2.-, H7-AP2, HHARI, Monocyte protein 6, MOP-6, Protein ariadne-1 homolog, ARI-1, UbcH7-binding protein, UbcM4-interacting protein, Ubiquitin-conjugating enzyme E2-binding protein 1, ARIH1, ARI, MOP6, UBCH7BP

**Target/Specificity**

Human ARIH1.

**Reconstitution & Storage**

Store at -20°C. Minimize freezing and thawing.

**Precautions**

ARIH1 Antibody (C-Terminus) is for research use only and not for use in diagnostic or therapeutic procedures.

**ARIH1 Antibody (C-Terminus) - Protein Information**

**Name** ARIH1 ([HGNC:689](#))

**Function**

E3 ubiquitin-protein ligase, which catalyzes ubiquitination of target proteins together with ubiquitin-conjugating enzyme E2 UBE2L3 (PubMed: [15236971](http://www.uniprot.org/citations/15236971), PubMed: [21532592](http://www.uniprot.org/citations/21532592), PubMed: [23707686](http://www.uniprot.org/citations/23707686), PubMed: [24076655](http://www.uniprot.org/citations/24076655), PubMed: [27565346](http://www.uniprot.org/citations/27565346)). Acts as an atypical E3 ubiquitin-protein ligase by working together with cullin-RING ubiquitin ligase (CRL) complexes and initiating ubiquitination of CRL substrates: associates with CRL complexes and

specifically mediates addition of the first ubiquitin on CRLs targets (PubMed:<a href="http://www.uniprot.org/citations/27565346" target="\_blank">27565346</a>). The initial ubiquitin is then elongated by CDC34/UBE2R1 and UBE2R2 (PubMed:<a href="http://www.uniprot.org/citations/27565346" target="\_blank">27565346</a>). E3 ubiquitin-protein ligase activity is activated upon binding to neddylated cullin-RING ubiquitin ligase complexes (PubMed:<a href="http://www.uniprot.org/citations/24076655" target="\_blank">24076655</a>, PubMed:<a href="http://www.uniprot.org/citations/27565346" target="\_blank">27565346</a>). Plays a role in protein translation in response to DNA damage by mediating ubiquitination of EIF4E2, the consequences of EIF4E2 ubiquitination are however unclear (PubMed:<a href="http://www.uniprot.org/citations/25624349" target="\_blank">25624349</a>). According to a report, EIF4E2 ubiquitination leads to promote EIF4E2 cap-binding and protein translation arrest (PubMed:<a href="http://www.uniprot.org/citations/25624349" target="\_blank">25624349</a>). According to another report EIF4E2 ubiquitination leads to its subsequent degradation (PubMed:<a href="http://www.uniprot.org/citations/14623119" target="\_blank">14623119</a>). Acts as the ligase involved in ISGylation of EIF4E2 (PubMed:<a href="http://www.uniprot.org/citations/17289916" target="\_blank">17289916</a>). In vitro, controls the degradation of the LINC (Linker of Nucleoskeleton and Cytoskeleton) complex member SUN2 and may therefore have a role in the formation and localization of the LINC complex, and as a consequence, nuclear subcellular localization and nuclear morphology (PubMed:<a href="http://www.uniprot.org/citations/29689197" target="\_blank">29689197</a>).

**Cellular Location**

Cytoplasm. Nucleus. Nucleus, Cajal body. Note=Mainly cytoplasmic (PubMed:11278816). Present in Lewy body (PubMed:21590270)

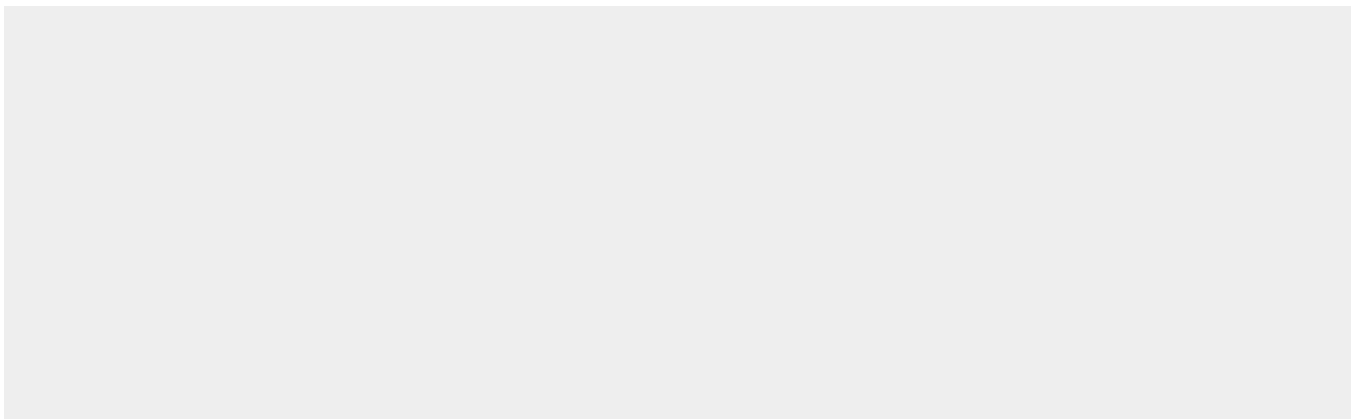
**Tissue Location**

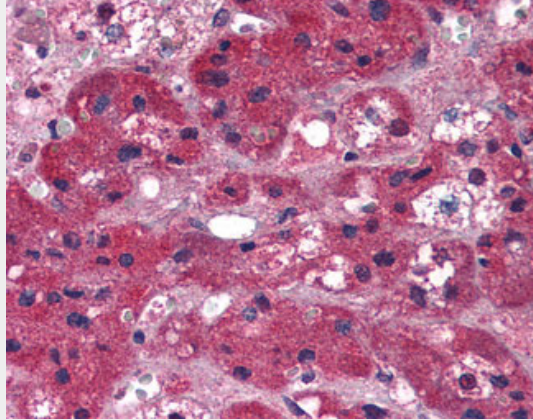
Widely expressed..

**ARIH1 Antibody (C-Terminus) - Protocols**

Provided below are standard protocols that you may find useful for product applications.

- [Western Blot](#)
- [Blocking Peptides](#)
- [Dot Blot](#)
- [Immunohistochemistry](#)
- [Immunofluorescence](#)
- [Immunoprecipitation](#)
- [Flow Cytometry](#)
- [Cell Culture](#)

**ARIH1 Antibody (C-Terminus) - Images**



Anti-ARIH1 antibody IHC of human adrenal.

### **ARIH1 Antibody (C-Terminus) - Background**

E3 ubiquitin-protein ligase, which catalyzes polyubiquitination of target proteins together with ubiquitin- conjugating enzyme E2 UBE2L3. May play a role in protein translation by mediating polyubiquitination of EIF4E2, leading to its subsequent degradation. Acts as the ligase involved in ISGylation of EIF4E2.

### **ARIH1 Antibody (C-Terminus) - References**

- Moynihan T.P.,et al.J. Biol. Chem. 274:30963-30968(1999).
- Ardley H.C.,et al.Submitted (MAY-2002) to UniProtKB.
- Trockenbacher A.,et al.Submitted (JUN-1998) to the EMBL/GenBank/DDBJ databases.
- Ota T.,et al.Nat. Genet. 36:40-45(2004).
- Zody M.C.,et al.Nature 440:671-675(2006).