

TTR / Transthyretin Antibody
Rabbit Polyclonal Antibody
Catalog # ALS12342**Specification**

TTR / Transthyretin Antibody - Product Information

Application	WB, IHC
Primary Accession	P02766
Reactivity	Human, Mouse, Rat
Host	Rabbit
Clonality	Polyclonal
Calculated MW	16kDa KDa

TTR / Transthyretin Antibody - Additional Information**Gene ID** 7276**Other Names**

Transthyretin, ATTR, Prealbumin, TBPA, TTR, PALB

Reconstitution & Storage

Long term: -20°C; Short term: +4°C. Avoid repeat freeze-thaw cycles.

Precautions

TTR / Transthyretin Antibody is for research use only and not for use in diagnostic or therapeutic procedures.

TTR / Transthyretin Antibody - Protein Information**Name** TTR**Synonyms** PALB**Function**

Thyroid hormone-binding protein. Probably transports thyroxine from the bloodstream to the brain.

Cellular Location

Secreted. Cytoplasm.

Tissue Location

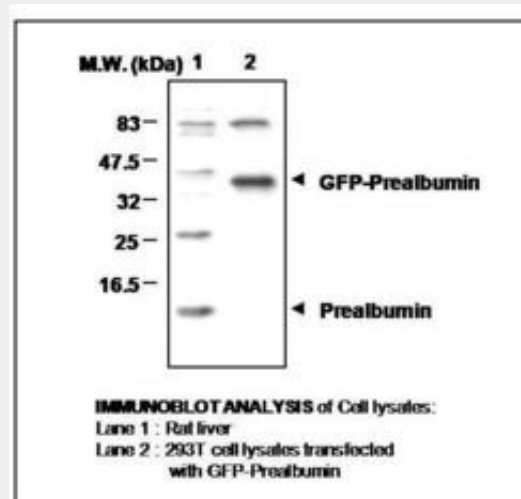
Detected in serum and cerebrospinal fluid (at protein level). Highly expressed in choroid plexus epithelial cells Detected in retina pigment epithelium and liver

TTR / Transthyretin Antibody - Protocols

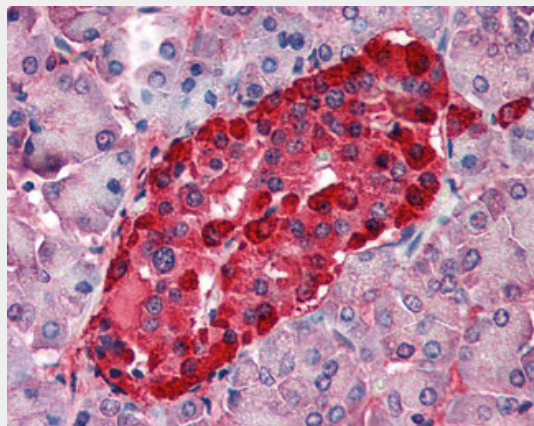
Provided below are standard protocols that you may find useful for product applications.

- [Western Blot](#)
- [Blocking Peptides](#)
- [Dot Blot](#)
- [Immunohistochemistry](#)
- [Immunofluorescence](#)
- [Immunoprecipitation](#)
- [Flow Cytometry](#)
- [Cell Culture](#)

TTR / Transthyretin Antibody - Images



0



Anti-TTR / Transthyretin antibody IHC of human pancreas.

TTR / Transthyretin Antibody - Background

Thyroid hormone-binding protein. Probably transports thyroxine from the bloodstream to the brain.

TTR / Transthyretin Antibody - References

- Mita S., et al. *Biochem. Biophys. Res. Commun.* 124:558-564(1984).
Wallace M.R., et al. *Biochem. Biophys. Res. Commun.* 129:753-758(1985).
Sasaki H., et al. *Gene* 37:191-197(1985).
Tsuzuki T., et al. *J. Biol. Chem.* 260:12224-12227(1985).

Mita S., et al. J. Biochem. 100:1215-1222(1986).