

**TGFB4 / LEFTY2 Antibody (clone 7C5G1H6H10)**  
**Mouse Monoclonal Antibody**  
**Catalog # ALS12311**

**Specification**

---

**TGFB4 / LEFTY2 Antibody (clone 7C5G1H6H10) - Product Information**

Application	WB, IHC
Primary Accession	<a href="#">O00292</a>
Reactivity	Human
Host	Mouse
Clonality	Monoclonal
Calculated MW	41kDa KDa

**TGFB4 / LEFTY2 Antibody (clone 7C5G1H6H10) - Additional Information**

**Gene ID** 7044

**Other Names**

Left-right determination factor 2, Endometrial bleeding-associated factor, Left-right determination factor A, Protein lefty-2, Protein lefty-A, Transforming growth factor beta-4, TGF-beta-4, LEFTY2, EBAF, LEFTA, LEFTYA, TGFB4

**Target/Specificity**

A BALB/c mouse was immunized with a recombinant form of 6X HIS tagged human LEFTY. Hybridoma: Produced by the fusion between BALB/c mouse splenocytes and mouse Sp2/0 myeloma cells using conventional hybridoma technology.

**Reconstitution & Storage**

+4°C or -20°C, Avoid repeated freezing and thawing.

**Precautions**

TGFB4 / LEFTY2 Antibody (clone 7C5G1H6H10) is for research use only and not for use in diagnostic or therapeutic procedures.

**TGFB4 / LEFTY2 Antibody (clone 7C5G1H6H10) - Protein Information**

**Name** LEFTY2

**Synonyms** EBAF, LEFTA, LEFTYA, TGFB4

**Function**

Required for left-right (L-R) asymmetry determination of organ systems in mammals. May play a role in endometrial bleeding.

**Cellular Location**

Secreted.

**Tissue Location**

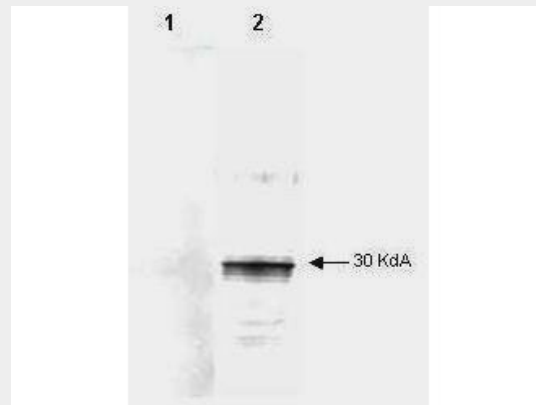
Mesenchymal cells of the endometrial stroma.

### TGFB4 / LEFTY2 Antibody (clone 7C5G1H6H10) - Protocols

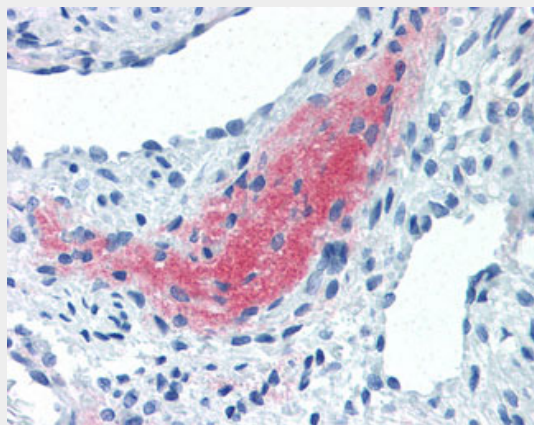
Provided below are standard protocols that you may find useful for product applications.

- [Western Blot](#)
- [Blocking Peptides](#)
- [Dot Blot](#)
- [Immunohistochemistry](#)
- [Immunofluorescence](#)
- [Immunoprecipitation](#)
- [Flow Cytometry](#)
- [Cell Culture](#)

### TGFB4 / LEFTY2 Antibody (clone 7C5G1H6H10) - Images



Mab anti-Human LEFTY antibody (clone 7C5G1H6H10) is shown to detect by western blot partially...



Anti-LEFTY2 antibody IHC of human uterus, myometrium.

### TGFB4 / LEFTY2 Antibody (clone 7C5G1H6H10) - Background

Required for left-right (L-R) asymmetry determination of organ systems in mammals. May play a role in endometrial bleeding.

### TGFB4 / LEFTY2 Antibody (clone 7C5G1H6H10) - References

Kothapalli R.,et al.J. Clin. Invest. 99:2342-2350(1997).  
Kosaki K.,et al.Am. J. Hum. Genet. 64:712-721(1999).  
Ota T.,et al.Nat. Genet. 36:40-45(2004).  
Otsuki T.,et al.DNA Res. 12:117-126(2005).  
Gregory S.G.,et al.Nature 441:315-321(2006).