

PLIN3 / M6PRBP1 / TIP47 Antibody (N-Terminus)
Rabbit Polyclonal Antibody
Catalog # ALS12310

Specification

PLIN3 / M6PRBP1 / TIP47 Antibody (N-Terminus) - Product Information

Application	WB, IHC
Primary Accession	O60664
Reactivity	Human, Mouse, Rat
Host	Rabbit
Clonality	Polyclonal
Calculated MW	47kDa KDa

PLIN3 / M6PRBP1 / TIP47 Antibody (N-Terminus) - Additional Information

Gene ID 10226

Other Names

Perilipin-3, 47 kDa mannose 6-phosphate receptor-binding protein, 47 kDa MPR-binding protein, Cargo selection protein TIP47, Mannose-6-phosphate receptor-binding protein 1, Placental protein 17, PP17, PLIN3, M6PRBP1, TIP47

Target/Specificity

14 amino acid peptide from near the amino terminus of human TIP47

Reconstitution & Storage

Short term 4°C, long term aliquot and store at -20°C, avoid freeze thaw cycles. Store undiluted.

Precautions

PLIN3 / M6PRBP1 / TIP47 Antibody (N-Terminus) is for research use only and not for use in diagnostic or therapeutic procedures.

PLIN3 / M6PRBP1 / TIP47 Antibody (N-Terminus) - Protein Information

Name PLIN3

Synonyms M6PRBP1, TIP47 {ECO:0000303|PubMed:95901

Function

Structural component of lipid droplets, which is required for the formation and maintenance of lipid storage droplets (PubMed:34077757). Required for the transport of mannose 6-phosphate receptors (MPR) from endosomes to the trans-Golgi network (PubMed:9590177).

Cellular Location

Lipid droplet. Endosome membrane; Peripheral membrane protein; Cytoplasmic side. Cytoplasm. Note=Membrane associated on endosomes (PubMed:15545278). Detected in the envelope and the

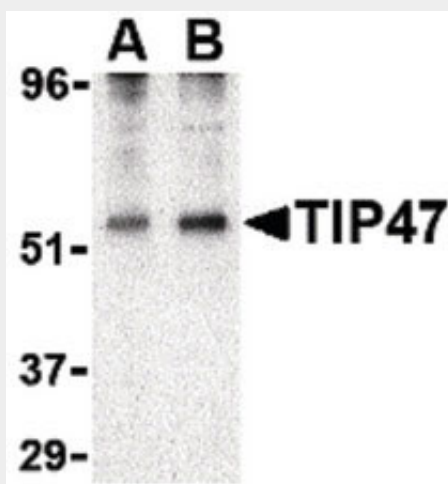
core of lipid bodies and in lipid sails (PubMed:15545278)

PLIN3 / M6PRBP1 / TIP47 Antibody (N-Terminus) - Protocols

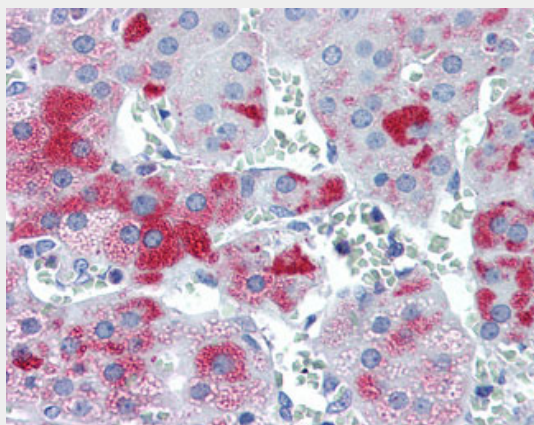
Provided below are standard protocols that you may find useful for product applications.

- [Western Blot](#)
- [Blocking Peptides](#)
- [Dot Blot](#)
- [Immunohistochemistry](#)
- [Immunofluorescence](#)
- [Immunoprecipitation](#)
- [Flow Cytometry](#)
- [Cell Culture](#)

PLIN3 / M6PRBP1 / TIP47 Antibody (N-Terminus) - Images



Western blot of TIP47 in EL4 cell lysate with TIP47 antibody at (A) 0.5 and (B) 1 ug/ml.



Anti-PLIN3 / M6PRBP1 antibody IHC of human adrenal.

PLIN3 / M6PRBP1 / TIP47 Antibody (N-Terminus) - Background

Required for the transport of mannose 6-phosphate receptors (MPR) from endosomes to the trans-Golgi network.

PLIN3 / M6PRBP1 / TIP47 Antibody (N-Terminus) - References

Diaz E., et al. Cell 93:433-443(1998).

Than N.G., et al. Eur. J. Biochem. 258:752-757(1998).

Than N.G., et al. Tumor Biol. 20:184-192(1999).

Kalnine N., et al. Submitted (MAY-2003) to the EMBL/GenBank/DDBJ databases.

Ota T., et al. Nat. Genet. 36:40-45(2004).