

CXCR6 Antibody (N-Terminus)
Rabbit Polyclonal Antibody
Catalog # ALS12301**Specification**

CXCR6 Antibody (N-Terminus) - Product Information

Application	IHC, WB
Primary Accession	O00574
Reactivity	Human
Host	Rabbit
Clonality	Polyclonal
Calculated MW	39kDa KDa

CXCR6 Antibody (N-Terminus) - Additional Information**Gene ID** 10663**Other Names**

C-X-C chemokine receptor type 6, CXC-R6, CXCR-6, CDw186, G-protein coupled receptor STRL33, G-protein coupled receptor bonzo, CD186, CXCR6, BONZO, STRL33, TYMSTR

Target/Specificity

peptide corresponding to amino acids near the amino terminus of human Bonzo/STRL33 The sequence of this peptide differs from those of African green monkey and pig-tailed macaque by one or two amino acids, respectively,

Reconstitution & Storage

Short term 4°C, long term aliquot and store at -20°C, avoid freeze thaw cycles. Store undiluted.

Precautions

CXCR6 Antibody (N-Terminus) is for research use only and not for use in diagnostic or therapeutic procedures.

CXCR6 Antibody (N-Terminus) - Protein Information**Name** CXCR6**Synonyms** BONZO, STRL33, TYMSTR**Function**

Receptor for the C-X-C chemokine CXCL16. Used as a coreceptor by SIVs and by strains of HIV-2 and m-tropic HIV-1.

Cellular Location

Cell membrane; Multi-pass membrane protein.

Tissue Location

Expressed in lymphoid tissues and activated T cells

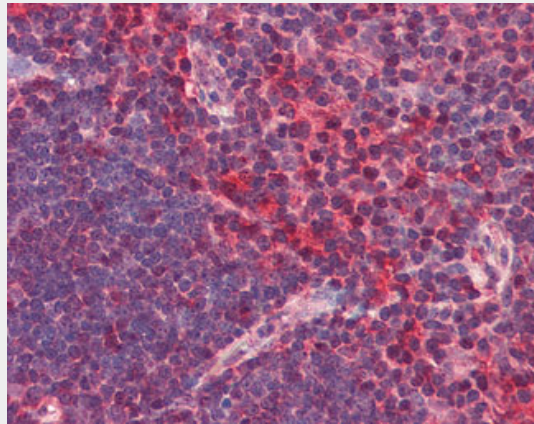
Volume
50 μ l

CXCR6 Antibody (N-Terminus) - Protocols

Provided below are standard protocols that you may find useful for product applications.

- [Western Blot](#)
- [Blocking Peptides](#)
- [Dot Blot](#)
- [Immunohistochemistry](#)
- [Immunofluorescence](#)
- [Immunoprecipitation](#)
- [Flow Cytometry](#)
- [Cell Culture](#)

CXCR6 Antibody (N-Terminus) - Images



Anti-CXCR6 antibody IHC of human thymus.



Western blot of Bonzo in human spleen tissue lysate in the absence (lane A) or presence (lane B)...

CXCR6 Antibody (N-Terminus) - Background

Receptor for the C-X-C chemokine CXCL16. Used as a coreceptor by SIVs and by strains of HIV-2 and m-tropic HIV-1.

CXCR6 Antibody (N-Terminus) - References

Deng H.K.,et al.Nature 388:296-300(1997).

Liao F.,et al.J. Exp. Med. 185:2015-2023(1997).

Loetscher M.,et al.Curr. Biol. 7:652-660(1997).

An P.,et al.Submitted (OCT-1997) to the EMBL/GenBank/DDBJ databases.

Kopatz S.A.,et al.Submitted (JUN-2003) to the EMBL/GenBank/DDBJ databases.