

SLC2A2 / GLUT2 Antibody
Mouse Monoclonal Antibody
Catalog # ALS12261**Specification**

SLC2A2 / GLUT2 Antibody - Product Information

Application	IHC
Primary Accession	P11168
Reactivity	Human
Host	Mouse
Clonality	Monoclonal
Calculated MW	57kDa KDa

SLC2A2 / GLUT2 Antibody - Additional Information**Gene ID** 6514**Other Names**

Solute carrier family 2, facilitated glucose transporter member 2, Glucose transporter type 2, liver, GLUT-2, SLC2A2, GLUT2

Target/Specificity

Recognizes human GLUT 2 (Glucose Transporter, Insulin Regulatable) expression on hGlut2-transfected NS0 cells but not on control transfectants. Detects Glut2 on the surface of the human intestinal cell line Caco2 in flow cytometry and on fixed cells ...

Reconstitution & Storage

Long term: -20°C; Short term: +4°C; Avoid freeze-thaw cycles.

Precautions

SLC2A2 / GLUT2 Antibody is for research use only and not for use in diagnostic or therapeutic procedures.

SLC2A2 / GLUT2 Antibody - Protein Information**Name** SLC2A2 ([HGNC:11006](#))**Function**

Facilitative hexose transporter that mediates the transport of glucose, fructose and galactose (PubMed:16186102, PubMed:23396969, PubMed:28083649, PubMed:8027028, PubMed:8457197). Likely mediates the bidirectional transfer of glucose across the plasma membrane of hepatocytes and is responsible for uptake of glucose by the beta cells; may comprise part of the glucose-sensing mechanism of the beta cell (PubMed:8027028). May also

participate with the Na(+)/glucose cotransporter in the transcellular transport of glucose in the small intestine and kidney (PubMed:3399500). Also able to mediate the transport of dehydroascorbate (PubMed:23396969).

Cellular Location

Cell membrane; Multi-pass membrane protein

Tissue Location

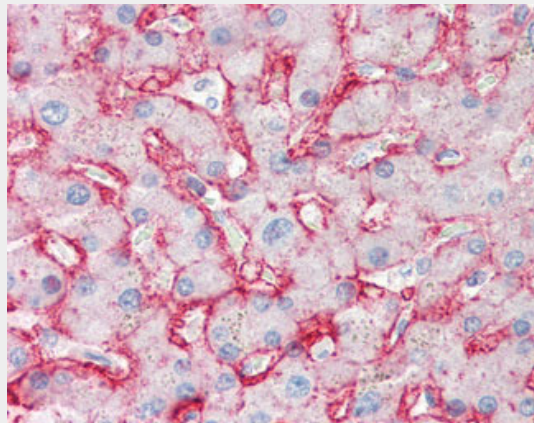
Liver, insulin-producing beta cell, small intestine and kidney.

SLC2A2 / GLUT2 Antibody - Protocols

Provided below are standard protocols that you may find useful for product applications.

- [Western Blot](#)
- [Blocking Peptides](#)
- [Dot Blot](#)
- [Immunohistochemistry](#)
- [Immunofluorescence](#)
- [Immunoprecipitation](#)
- [Flow Cytometry](#)
- [Cell Culture](#)

SLC2A2 / GLUT2 Antibody - Images



Anti-GLUT2 antibody IHC of human liver.

SLC2A2 / GLUT2 Antibody - Background

Facilitative glucose transporter. This isoform likely mediates the bidirectional transfer of glucose across the plasma membrane of hepatocytes and is responsible for uptake of glucose by the beta cells; may comprise part of the glucose-sensing mechanism of the beta cell. May also participate with the Na(+)/glucose cotransporter in the transcellular transport of glucose in the small intestine and kidney.

SLC2A2 / GLUT2 Antibody - References

Fukumoto H., et al. Proc. Natl. Acad. Sci. U.S.A. 85:5434-5438(1988).
Ota T., et al. Nat. Genet. 36:40-45(2004).
Muzny D.M., et al. Nature 440:1194-1198(2006).

Mural R.J.,et al.Submitted (SEP-2005) to the EMBL/GenBank/DDBJ databases.
Matsubara A.,et al.J. Clin. Endocrinol. Metab. 80:3131-3135(1995).