

**AIF1 / IBA1 Antibody (C-Terminus)**  
**Goat Polyclonal Antibody**  
**Catalog # ALS12252**

**Specification**

---

**AIF1 / IBA1 Antibody (C-Terminus) - Product Information**

Application	IHC
Primary Accession	<a href="#">P55008</a>
Reactivity	Human
Host	Goat
Clonality	Polyclonal
Calculated MW	17kDa KDa

**AIF1 / IBA1 Antibody (C-Terminus) - Additional Information**

**Gene ID** 199

**Other Names**

Allograft inflammatory factor 1, AIF-1, Ionized calcium-binding adapter molecule 1, Protein G1, AIF1, G1, IBA1

**Target/Specificity**

Human AIF1 / IBA1. This antibody is expected to recognise isoform 1 (NP\_116573.1) and isoform 3 (NP\_001614.3).

**Reconstitution & Storage**

Store at -20°C. Minimize freezing and thawing.

**Precautions**

AIF1 / IBA1 Antibody (C-Terminus) is for research use only and not for use in diagnostic or therapeutic procedures.

**AIF1 / IBA1 Antibody (C-Terminus) - Protein Information**

**Name** AIF1

**Synonyms** G1, IBA1

**Function**

Actin-binding protein that enhances membrane ruffling and RAC activation. Enhances the actin-bundling activity of LCP1. Binds calcium. Plays a role in RAC signaling and in phagocytosis. May play a role in macrophage activation and function. Promotes the proliferation of vascular smooth muscle cells and of T-lymphocytes. Enhances lymphocyte migration. Plays a role in vascular inflammation.

**Cellular Location**

Cytoplasm, cytoskeleton {ECO:0000250|UniProtKB:O70200}. Cell projection, ruffle membrane {ECO:0000250|UniProtKB:O70200}; Peripheral membrane protein

{ECO:0000250|UniProtKB:O70200}; Cytoplasmic side {ECO:0000250|UniProtKB:O70200}. Cell projection, phagocytic cup {ECO:0000250|UniProtKB:O70200}. Note=Associated with the actin cytoskeleton at membrane ruffles and at sites of phagocytosis {ECO:0000250|UniProtKB:O70200}

#### **Tissue Location**

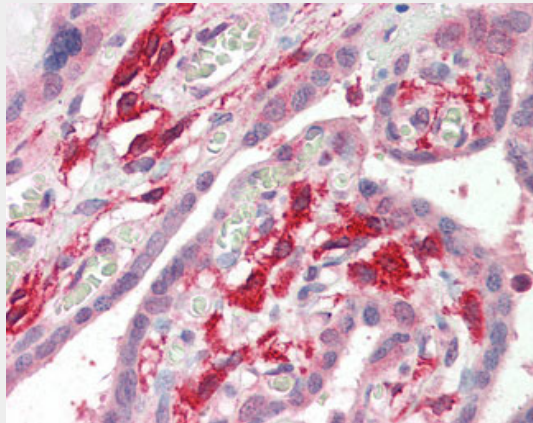
Detected in T-lymphocytes and peripheral blood mononuclear cells.

#### **AIF1 / IBA1 Antibody (C-Terminus) - Protocols**

Provided below are standard protocols that you may find useful for product applications.

- [Western Blot](#)
- [Blocking Peptides](#)
- [Dot Blot](#)
- [Immunohistochemistry](#)
- [Immunofluorescence](#)
- [Immunoprecipitation](#)
- [Flow Cytometry](#)
- [Cell Culture](#)

#### **AIF1 / IBA1 Antibody (C-Terminus) - Images**



Anti-AIF1 / IBA1 antibody IHC of human placenta.

#### **AIF1 / IBA1 Antibody (C-Terminus) - Background**

Actin-binding protein that enhances membrane ruffling and RAC activation. Enhances the actin-bundling activity of LCP1. Binds calcium. Plays a role in RAC signaling and in phagocytosis. May play a role in macrophage activation and function. Promotes the proliferation of vascular smooth muscle cells and of T- lymphocytes. Enhances lymphocyte migration. Plays a role in vascular inflammation.

#### **AIF1 / IBA1 Antibody (C-Terminus) - References**

- Albertella M.R.,et al.Hum. Mol. Genet. 3:793-799(1994).  
Holzinger I.,et al.Immunogenetics 42:315-322(1995).  
Autieri M.V.,et al.Biochem. Biophys. Res. Commun. 228:29-37(1996).  
Utans U.,et al.Transplantation 61:1387-1392(1996).  
de Baey A.,et al.Genomics 45:591-600(1997).