

S100A4 / FSP1 Antibody (C-Terminus)
Goat Polyclonal Antibody
Catalog # ALS12237**Specification**

S100A4 / FSP1 Antibody (C-Terminus) - Product Information

Application	IHC
Primary Accession	P26447
Reactivity	Human, Rabbit, Pig, Bovine, Dog, Horse
Host	Goat
Clonality	Polyclonal
Calculated MW	12kDa KDa

S100A4 / FSP1 Antibody (C-Terminus) - Additional Information**Gene ID** 6275**Other Names**

Protein S100-A4, Calvasculin, Metastasin, Placental calcium-binding protein, Protein Mts1, S100 calcium-binding protein A4, S100A4, CAPL, MTS1

Target/Specificity

Human S100A4 / FSP1. Both variants (NP_002952.1; NP_062427.1) represent identical protein.

Reconstitution & Storage

Store at -20°C. Minimize freezing and thawing.

Precautions

S100A4 / FSP1 Antibody (C-Terminus) is for research use only and not for use in diagnostic or therapeutic procedures.

S100A4 / FSP1 Antibody (C-Terminus) - Protein Information**Name** S100A4**Synonyms** CAPL, MTS1**Function**

Calcium-binding protein that plays a role in various cellular processes including motility, angiogenesis, cell differentiation, apoptosis, and autophagy (PubMed: [16707441](http://www.uniprot.org/citations/16707441), PubMed: [23752197](http://www.uniprot.org/citations/23752197), PubMed: [30713770](http://www.uniprot.org/citations/30713770)). Increases cell motility and invasiveness by interacting with non-muscle myosin heavy chain (NMMHC) IIA/MYH9 (PubMed: [16707441](http://www.uniprot.org/citations/16707441)). Mechanistically, promotes filament depolymerization and increases the amount of soluble myosin-IIA, resulting in the formation of stable protrusions facilitating chemotaxis (By similarity). Modulates also the pro-apoptotic function of TP53 by

binding to its C-terminal transactivation domain within the nucleus and reducing its protein levels (PubMed:23752197). Within the extracellular space, stimulates cytokine production including granulocyte colony-stimulating factor and CCL24 from T-lymphocytes (By similarity). In addition, stimulates T-lymphocyte chemotaxis by acting as a chemoattractant complex with PGLYRP1 that promotes lymphocyte migration via CCR5 and CXCR3 receptors (PubMed:26654597, PubMed:30713770).

Cellular Location

Secreted. Nucleus Cytoplasm {ECO:0000250|UniProtKB:P07091}

Tissue Location

Ubiquitously expressed.

Volume

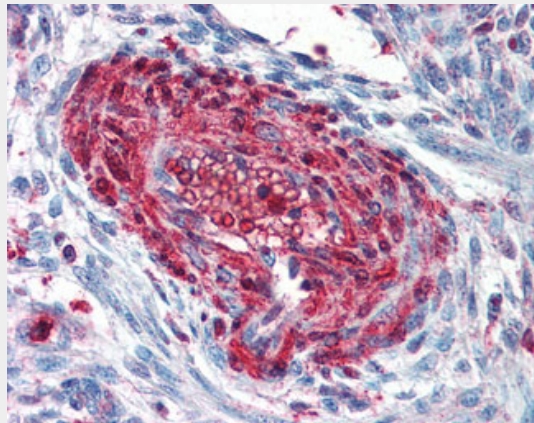
Array

S100A4 / FSP1 Antibody (C-Terminus) - Protocols

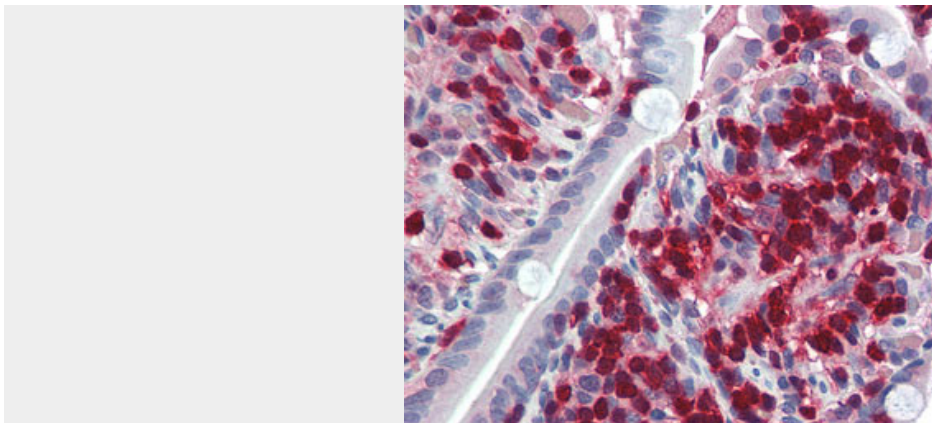
Provided below are standard protocols that you may find useful for product applications.

- [Western Blot](#)
- [Blocking Peptides](#)
- [Dot Blot](#)
- [Immunohistochemistry](#)
- [Immunofluorescence](#)
- [Immunoprecipitation](#)
- [Flow Cytometry](#)
- [Cell Culture](#)

S100A4 / FSP1 Antibody (C-Terminus) - Images



Anti-S100A4 antibody IHC of human uterus, vessel.



Anti-S100A4 antibody IHC of human small intestine.

S100A4 / FSP1 Antibody (C-Terminus) - References

- Engelkamp D., et al. *Biochemistry* 31:10258-10264(1992).
Engelkamp D., et al. *Proc. Natl. Acad. Sci. U.S.A.* 90:6547-6551(1993).
Tulchinsky E.M., et al. *Proc. Natl. Acad. Sci. U.S.A.* 89:9146-9150(1992).
Ebert L., et al. Submitted (MAY-2004) to the EMBL/GenBank/DDBJ databases.
Ota T., et al. *Nat. Genet.* 36:40-45(2004).